



Student Success & Services Overview

Erin Foley, Vice President for Student Affairs
& Dean of Students

Board of Trustees, AQSS Committee
October 8, 2015

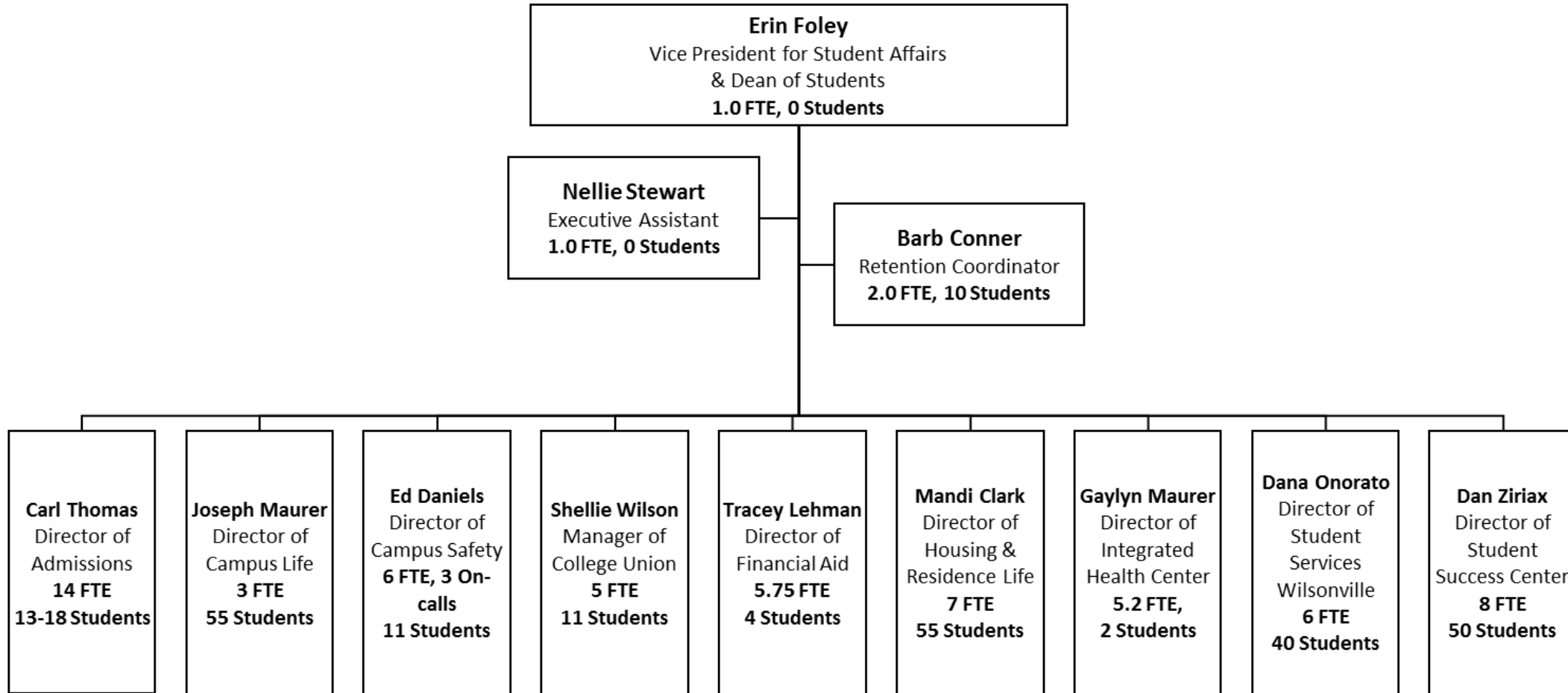


Student Affairs Mission Statement

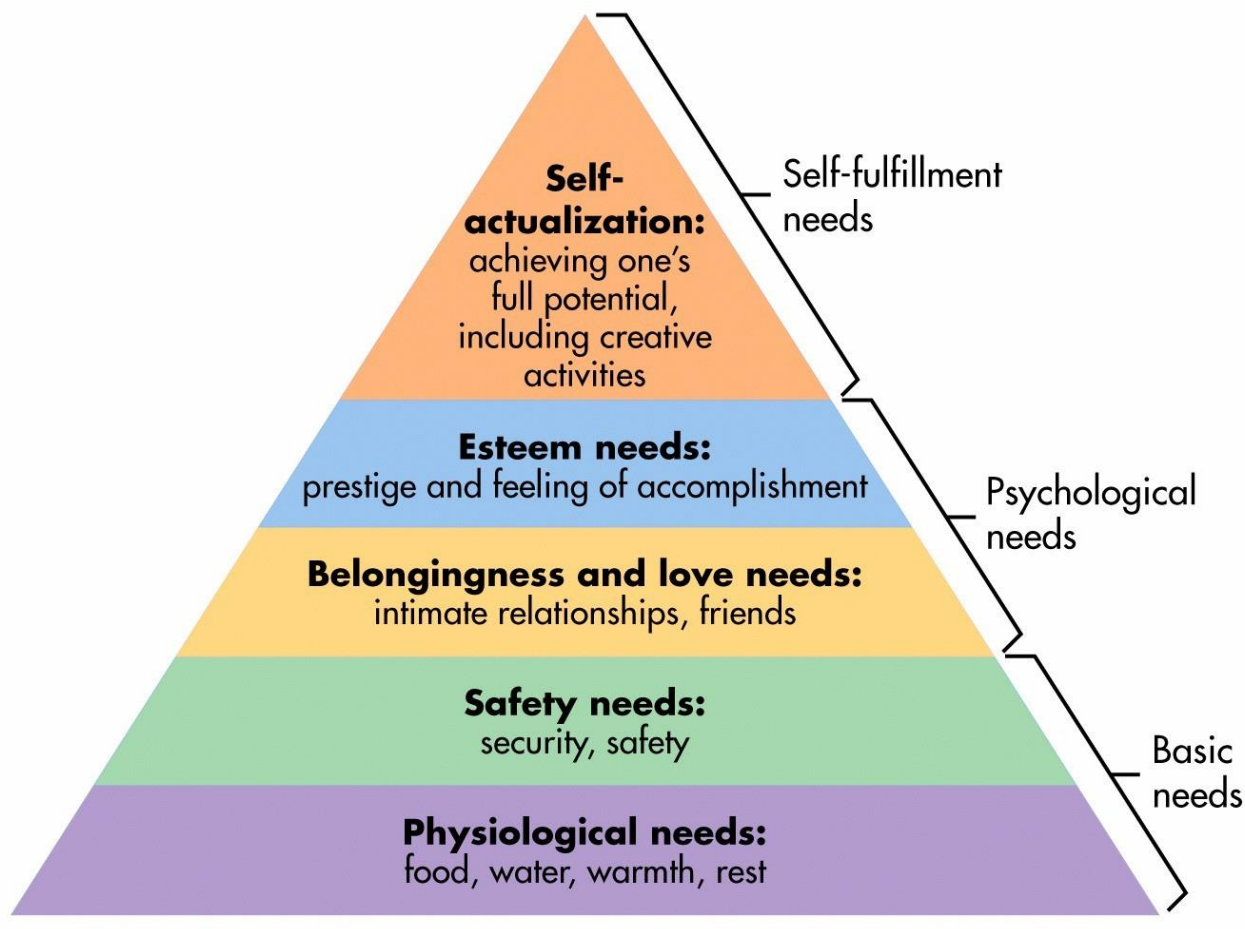
Student Affairs affirms the university mission by enhancing Oregon Tech's dynamic learning community through opportunities for access, development, and success. Student Affairs departments collaborate with students, faculty, staff, and external constituents to promote engagement, encourage holistic wellness, and support persistence to graduation, as well as the realization of educational and professional aspirations for students and alumni.



Student Affairs



Maslow's Hierarchy of Needs



This is
Student
Affairs





Recruitment

Pre-enrollment Activities

Registration

Orientation

Matriculation

Student Engagement

Student Success

Graduation

Alumni Involvement

Cradle to Grave

PRE-ENROLLMENT



Student Success

Campus Definition – 2.0 gpa, graduate

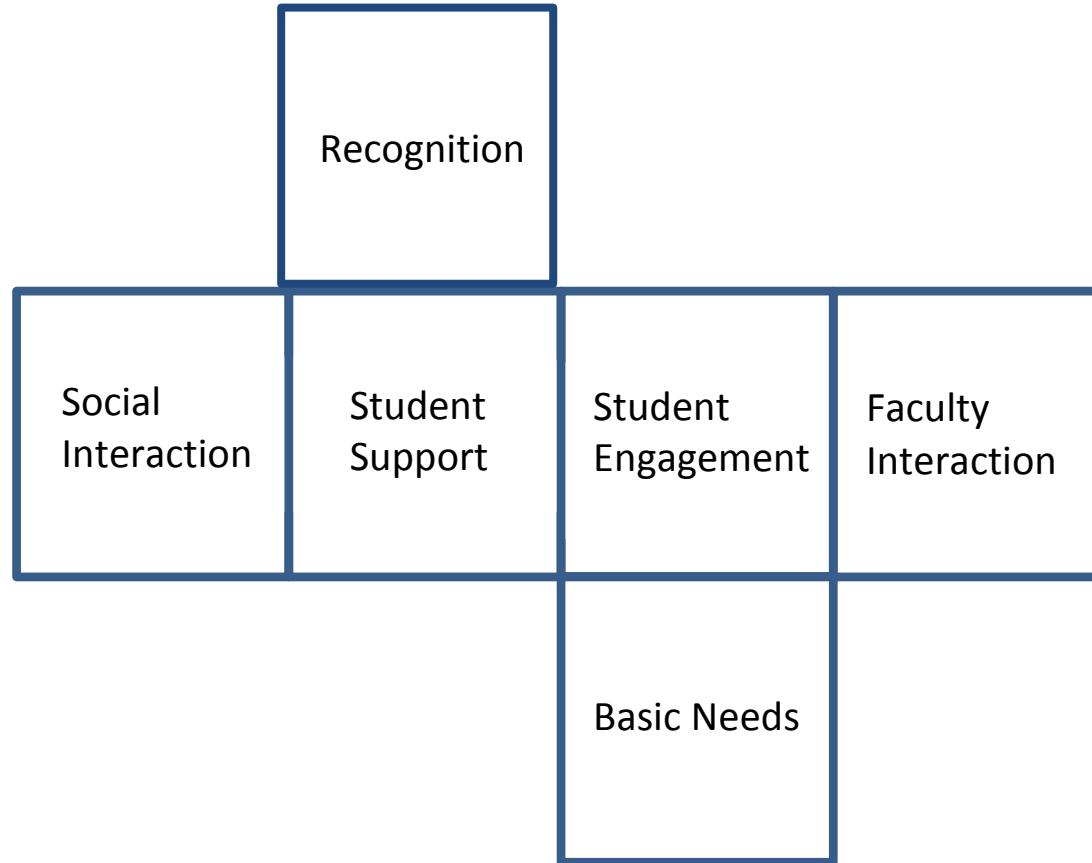
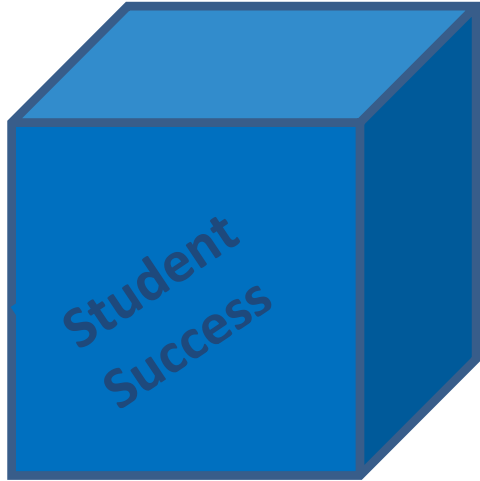
–Vs

An Individual Student's Definition

Implications



A Box Model



Basic Needs

- Housing & Residence Life
- Dining
- Campus Safety



Social Interaction

- Student clubs – 50+
- Student Programs – 10
- Orientation (fall, winter & spring terms)
- Res Life programs
- Intramurals
- International Student Services
- Outdoor Program
- College Union space – Diversity Center, WRC



Student Support



- Peer Consulting (tutoring) & equipment checkout
- Testing Services (DS accommodations)
- Student Health – physical, mental, health educ
- Registration
- TOP (TRiO)
- Disability Services
- ACAD (academic support classes) – 7 sections

Student Support cont.

- FYE (First Year Experience)
- Financial Aid
- Admissions requirements – frosh, transfer
- SSMs (Student Success Mentors) & RAs in HRL
- Women's Resource Center
- DOS – 1:1 appts, grievances, conduct mtgs
- SST – Student Support Team



Student Engagement

- Career Services – student jobs
- TOP (Tech Opportunities Program) – TRiO grant
- ASOIT & RHA
- Service Learning opportunities – V-OWLS
- Student Veterans Program
- Non-Traditional Student Lounge
- Diversity Center
- Leadership Academy
- Faculty Research projects



Faculty Interaction

- Academic Advising
- Club Advisor
- Outside class involvement: academic dept events
- Student research
- Rivalry Cup: Students v Faculty/staff quarterly

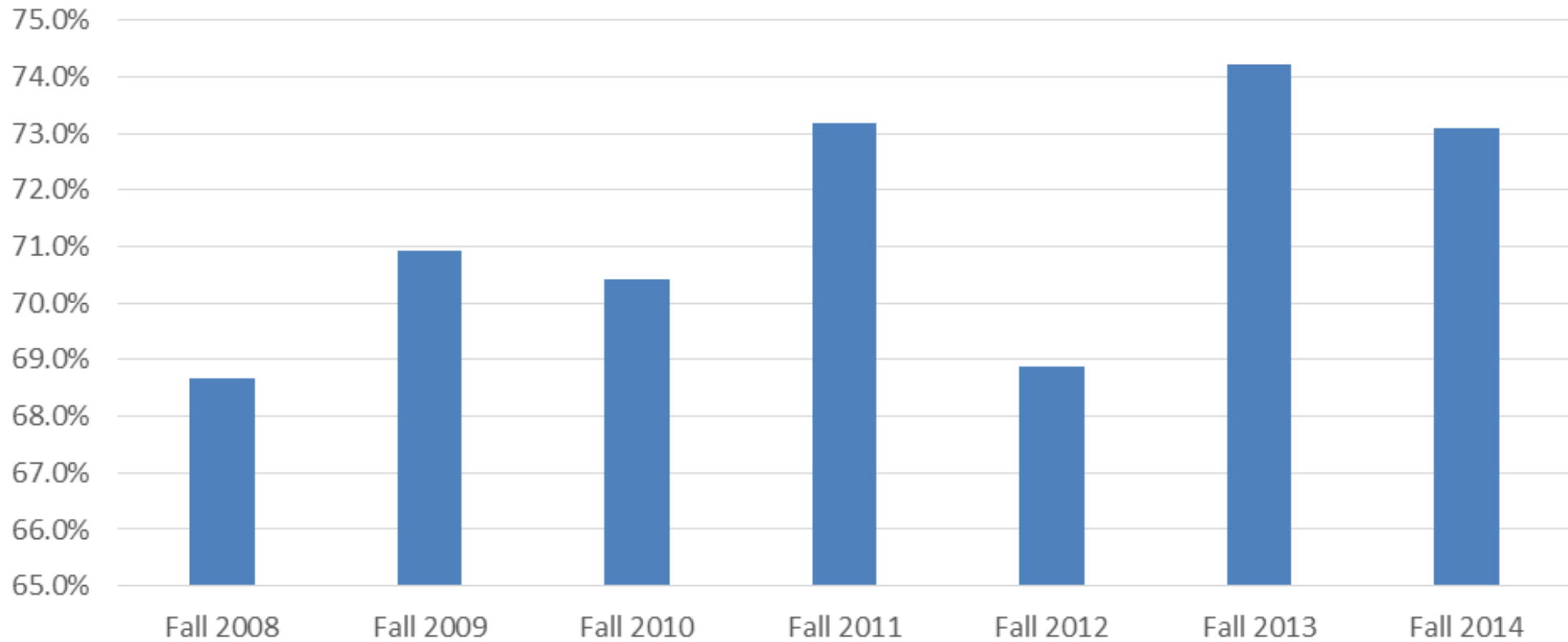


Recognition

- Student Awards
- TOP graduation ceremony
- Student Leaders receptions
- Honors program and distinction



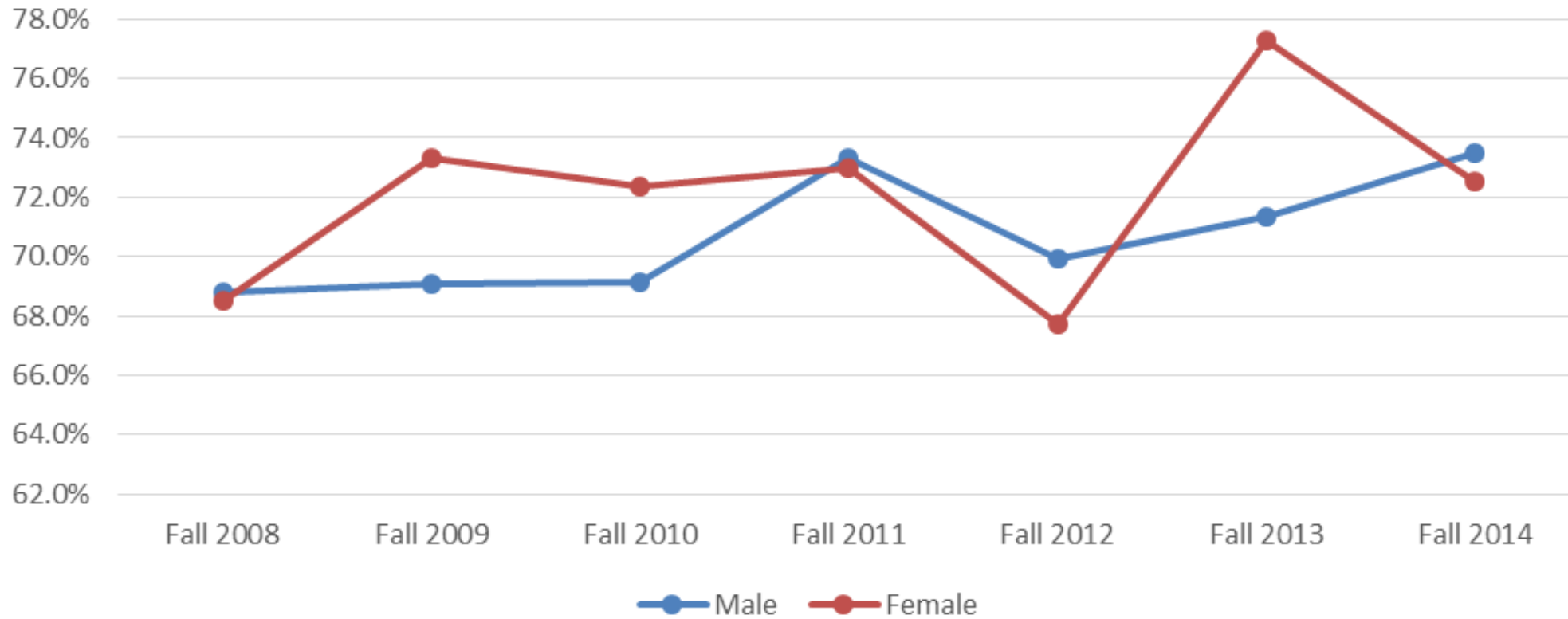
Freshmen Retention



	Fall 2008	Fall 2009	Fall 2010	Fall 2011	Fall 2012	Fall 2013	Fall 2014
Starting Cohort	268	344	355	287	318	388	342
Retained Next Fall	184	244	250	210	219	288	250
Freshmen Retention	68.7%	70.9%	70.4%	73.2%	68.9%	74.2%	73.1%



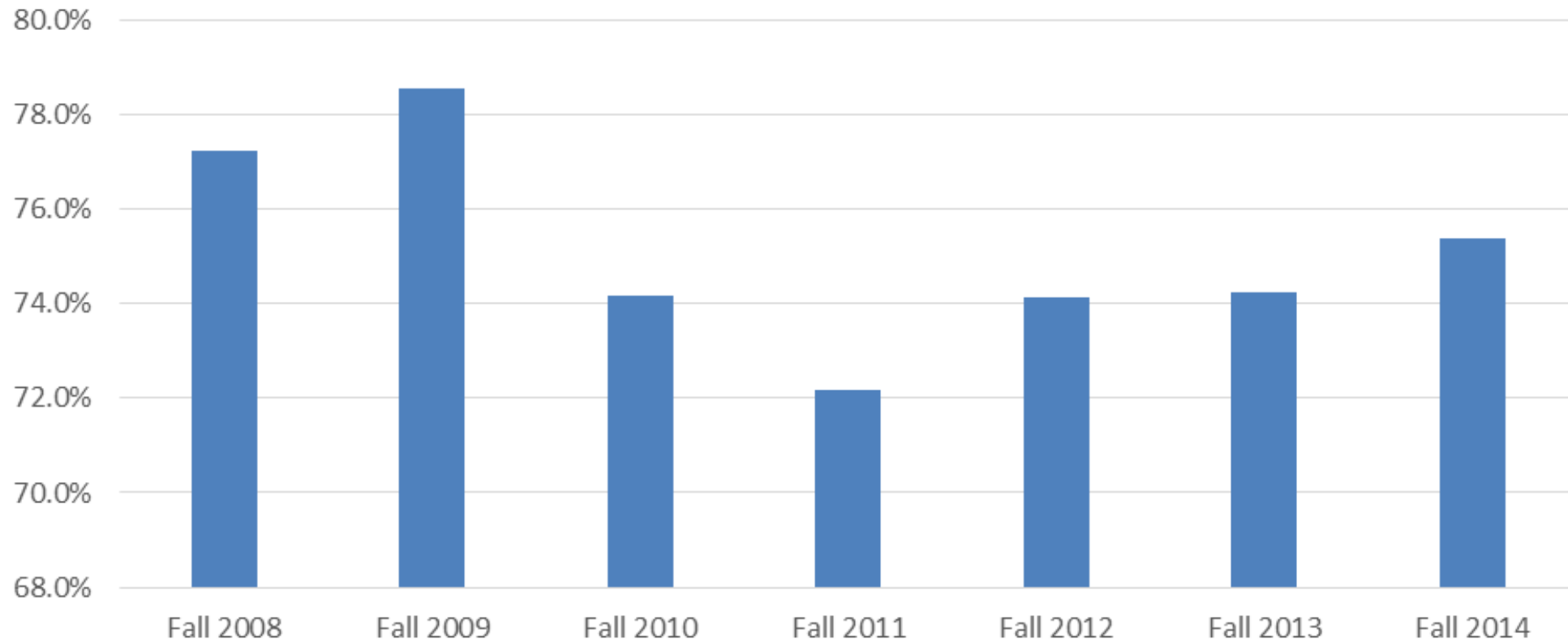
By Gender



	Fall 2008	Fall 2009	Fall 2010	Fall 2011	Fall 2012	Fall 2013	Fall 2014
Male	68.8%	69.1%	69.2%	73.3%	69.9%	71.4%	73.5%
Female	68.5%	73.3%	72.3%	73.0%	67.7%	77.2%	72.5%
Total	68.7%	70.9%	70.4%	73.2%	68.9%	74.2%	73.1%



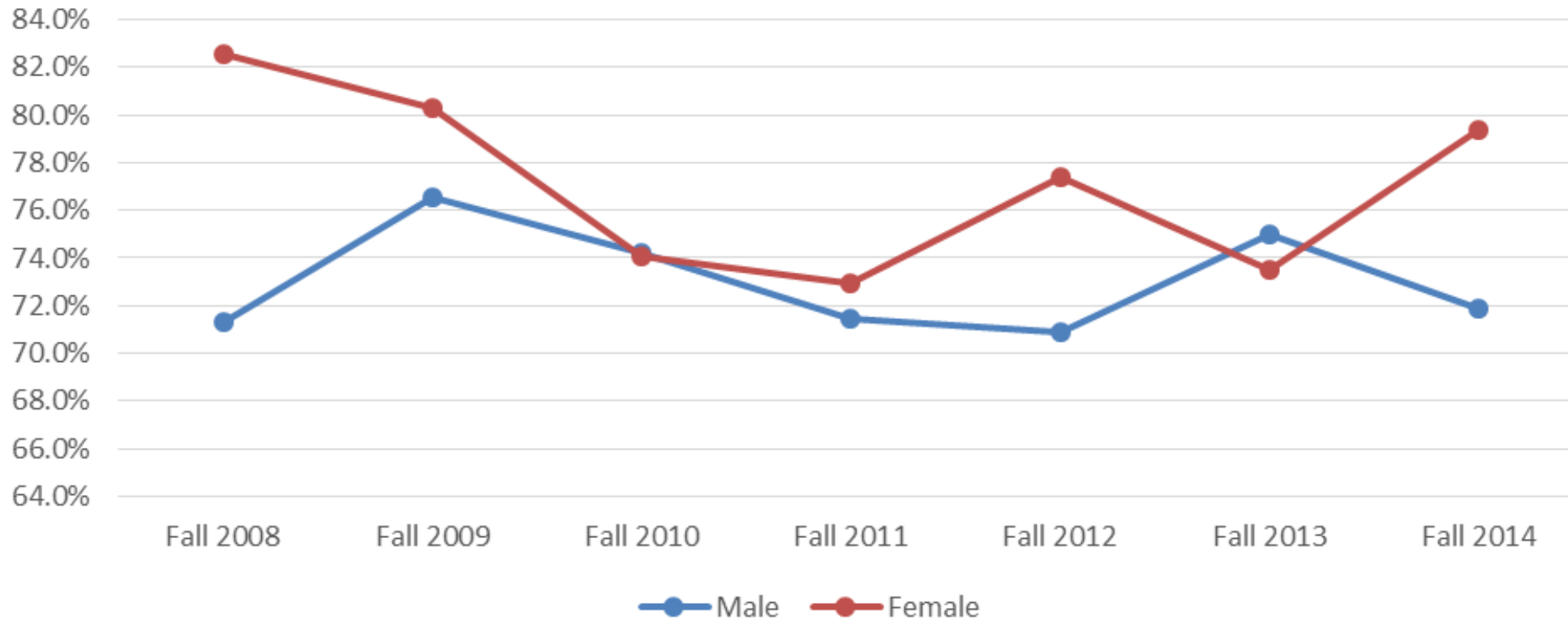
Transfer Retention



	Fall 2008	Fall 2009	Fall 2010	Fall 2011	Fall 2012	Fall 2013	Fall 2014
Starting Cohort	316	275	302	309	317	365	345
Retained Next Fall	244	216	224	223	235	271	260
Transfer Retention	77.2%	78.5%	74.2%	72.2%	74.1%	74.2%	75.4%

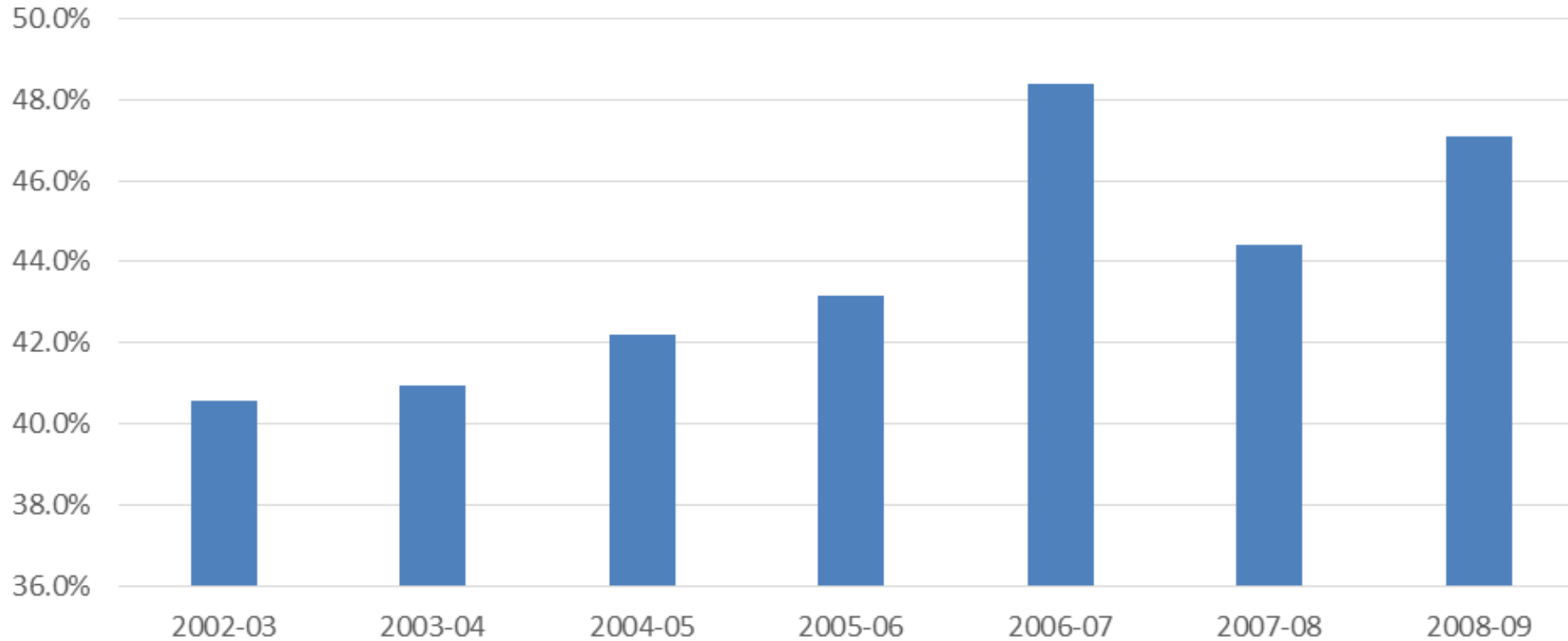


By Gender



	Fall 2008	Fall 2009	Fall 2010	Fall 2011	Fall 2012	Fall 2013	Fall 2014
Male	71.3%	76.6%	74.2%	71.4%	70.9%	75.0%	71.9%
Female	82.5%	80.3%	74.1%	72.9%	77.4%	73.5%	79.4%
Total	77.2%	78.5%	74.2%	72.2%	74.1%	74.2%	75.4%

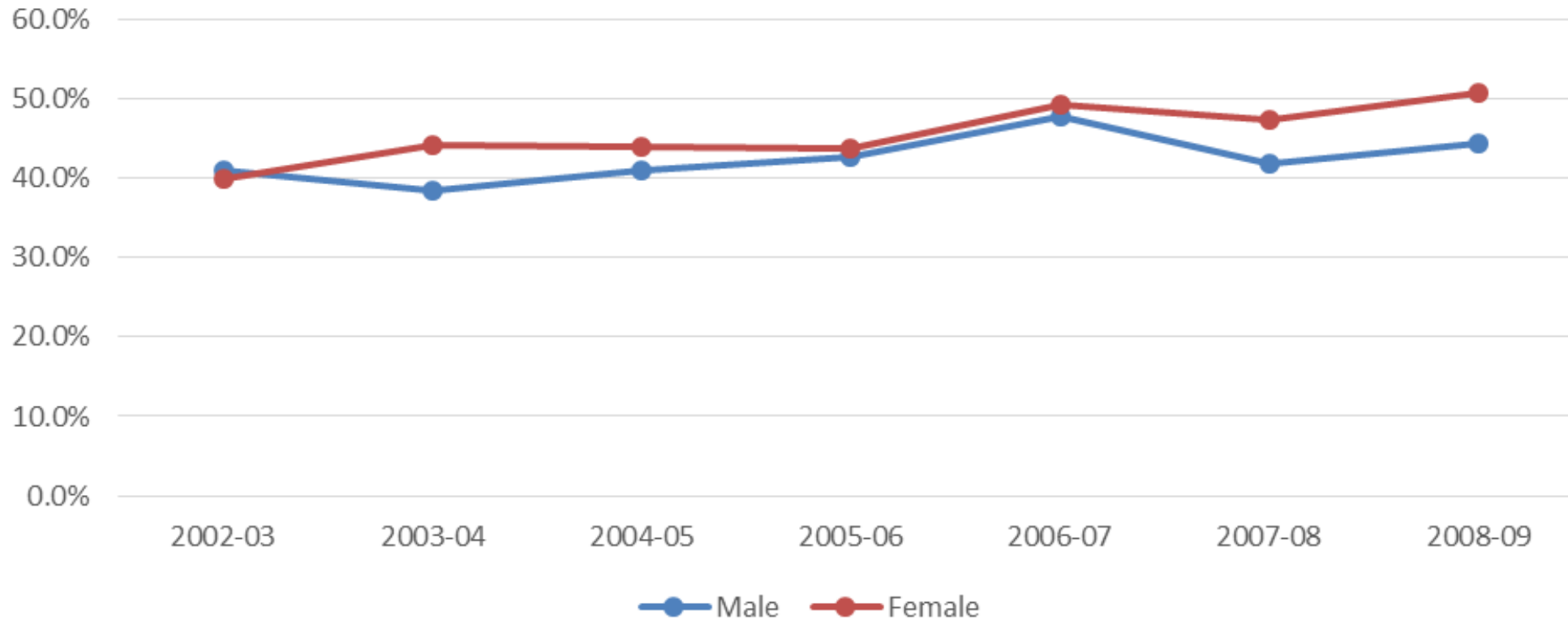
6 Year Graduation Rate



	2002-03	2003-04	2004-05	2005-06	2006-07	2007-08	2008-09
Starting Cohort	318	332	301	248	277	268	344
Graduated within 6 Years	129	136	127	107	134	119	162
6 Year Graduation Rate	40.6%	41.0%	42.2%	43.1%	48.4%	44.4%	47.1%



By Gender



	2002-03	2003-04	2004-05	2005-06	2006-07	2007-08	2008-09
Male	41.0%	38.5%	40.9%	42.6%	47.7%	41.8%	44.3%
Female	39.8%	44.1%	44.0%	43.7%	49.2%	47.2%	50.7%
Total	40.6%	41.0%	42.2%	43.1%	48.4%	44.4%	47.1%