


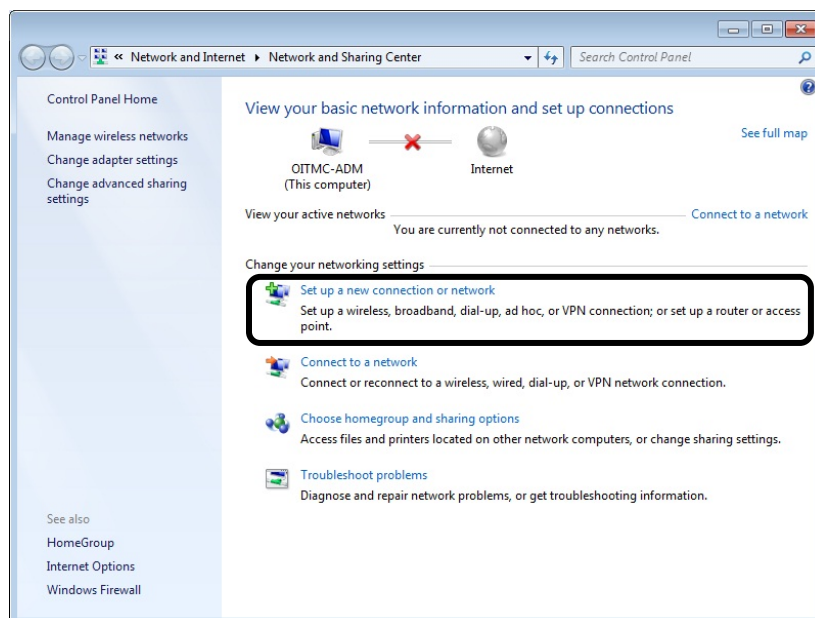
Connecting to TECH-STUDENT with Windows 7

These instructions are using the windows wireless manager. 3rd party wireless managers are not supported by ITS. If you are using a 3rd party wireless manager disable it to use this guide.

1. Check to make sure your wireless card is on.
 - Most computers have an indicator light for the wireless card.
 - Some computers have a button or combination of buttons to turn on your wireless.
2. Click the network connection  icon in your system tray at the bottom right corner of your screen; the following box will appear:
3. Click on “Open Network and Sharing Center”.

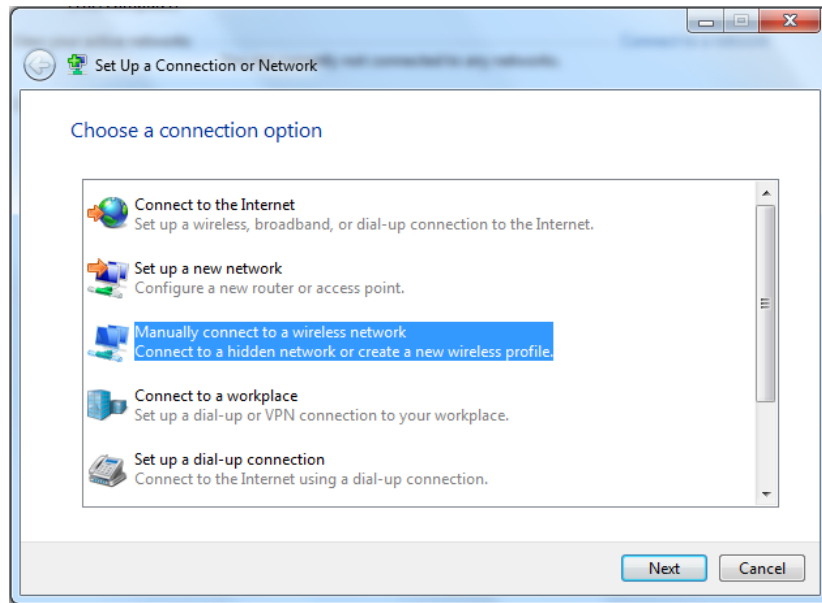


4. Click on “Set up a new connection or network”.

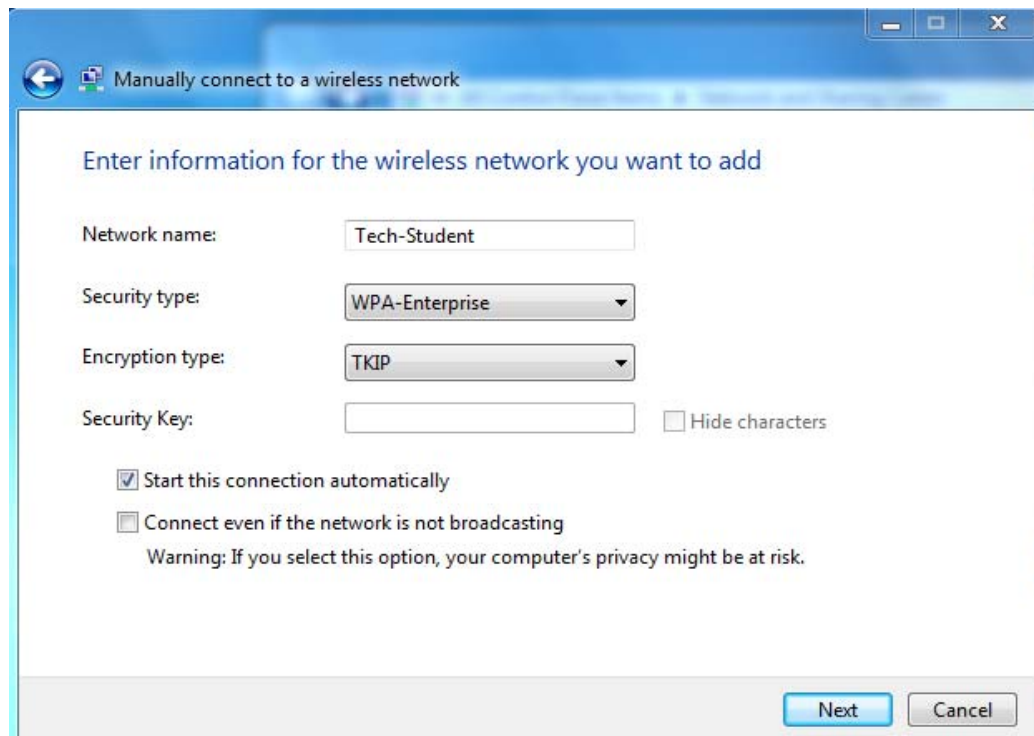


Connecting to TECH-STUDENT with Windows 7

5. Select “Manually connect to a wireless network” then click “Next”.



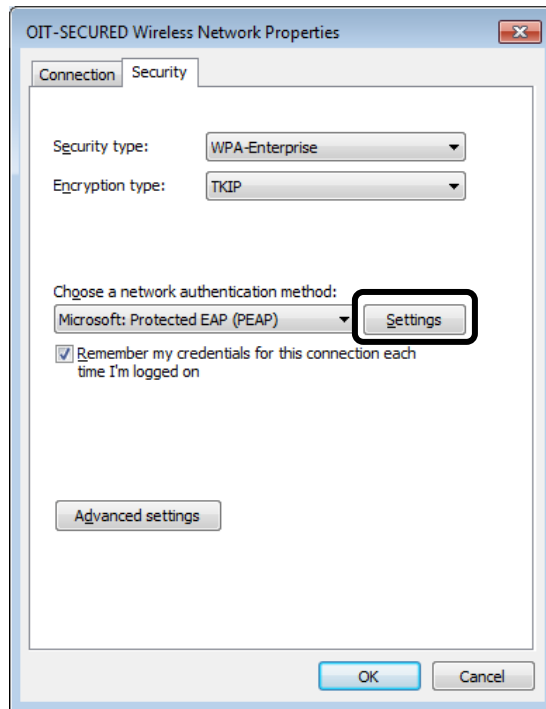
6. Enter “TECH-STUDENT” for the Network name and select “WPA2-Enterprise” for the Security type, then click “Next”.



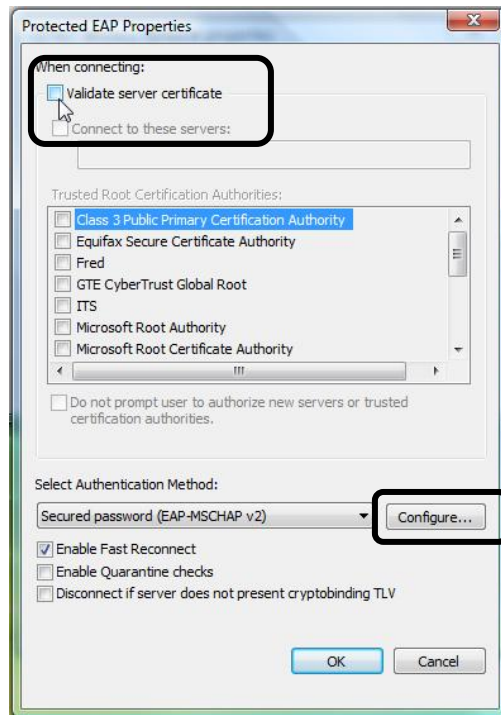
7. Select “Change connection Settings” and select the “Security” tab when the new window appears.

Connecting to TECH-STUDENT with Windows 7

- Click the “Settings” button.



- UNCHECK** “Validate server certificate” and click “Configure”.

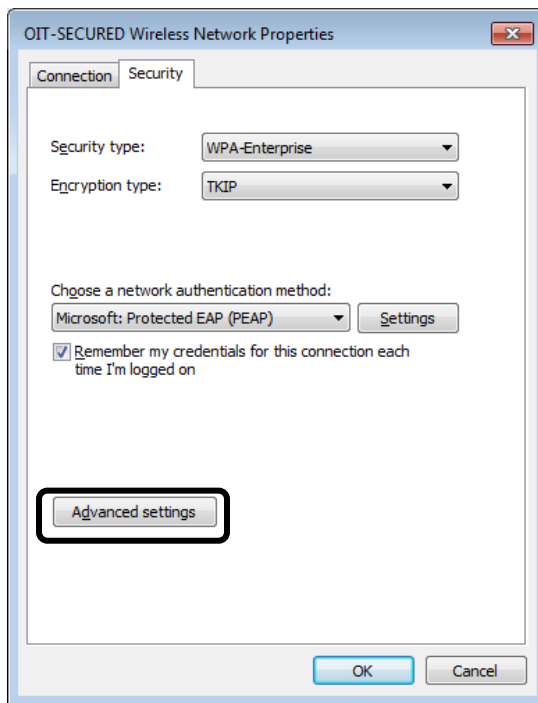


Connecting to TECH-STUDENT with Windows 7

10. **UNCHECK** “Automatically use my Windows logon...” then click “OK” and “OK”.

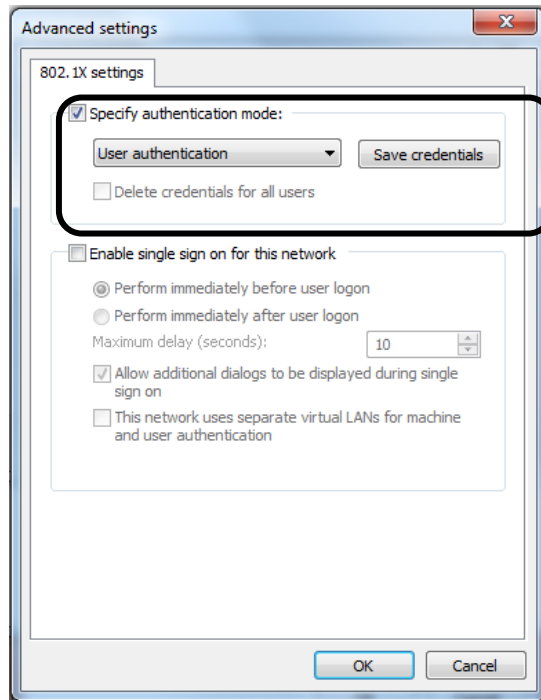


11. Click “Advanced Settings”

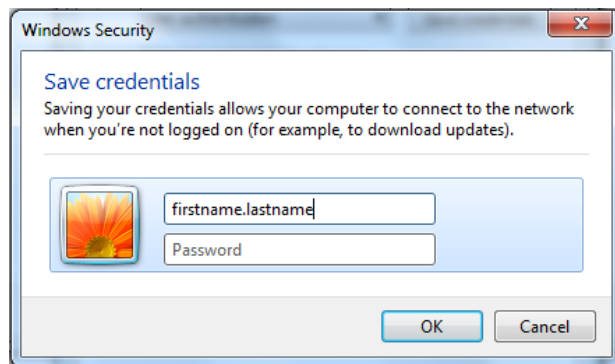


12. **CHECK** “Specify authentication mode” and select “User authentication”, then click “Save credentials”.

Connecting to TECH-STUDENT with Windows 7



13. Enter your MyOIT username and password. Click “OK” on the three open windows and then “Close”



14. You should now be connected.

This setup only needs to be done once, unless your password is changed. Please call the OIT Helpdesk at **(503) 821-1289** if you have any problems.