

FACT BOOK 2005-2006

SECTION 1: GENERAL INFORMATION

- 1.1 Introduction
- 1.2 Mission Statement
- 1.3.1 OIT – Portland Operations
- 1.3.2 OIT – Portland Operations: Statistical Profile
- 1.4 Oregon State Board of Higher Education
- 1.5 Oregon University System
- 1.6 History at a Glance
- 1.7 University Presidents

Organizational Charts

- Chart 1.8.1 President's Office and Cabinet
- Chart 1.8.2 Provost and Vice President for Academic Affairs' Staff
- Chart 1.8.3 Academic Departments
- Chart 1.8.4 Vice President for Finance and Administration's Staff
- Chart 1.8.5 Vice President for Student Affairs and Enrollment Management's Staff
- Chart 1.8.6 Vice President for University Advancement Staff
- 1.9 General Administration
- 1.10 School and Department Administrative Structure
- Table 1.11 Library Collections, 2000-01 to 2004-05
- Table 1.12 Library Services, 2000-01 to 2004-05
- 1.13 Degree Programs
- Chart 1.14 Academic Calendar, 2006-2007
- 1.16 OIT Partnerships
- 1.17 Klamath County Demographics
- 1.18 OIT Crime Statistics, 2003 to 2005

1.1 Oregon Institute of Technology INTRODUCTION

Oregon Institute of Technology is the only public institute of technology in the Pacific Northwest. Founded in 1947, OIT is accredited by the Commission on Colleges of the Northwest Association of Schools and Colleges. At its main campus in Klamath Falls, Oregon, OIT offers bachelor's degree programs in engineering, engineering technologies, health professions, management, communication and applied sciences. Bachelor's degree completion programs in selected fields are offered on-line and through OIT's Portland locations. The university also offers degree programs in Respiratory Care in Medford and Dental Hygiene in La Grande. OIT offers an in-house bachelor's degree completion program at Boeing facilities in the Seattle area. OIT also offers a Master of Science in Manufacturing Engineering Technology at its locations in Klamath Falls, Portland and Seattle (Boeing).

OIT plays a unique role in the Oregon University System. The teaching/learning philosophy is based on an applied approach to technology studies. For most students, more than 40 percent of instructional time is spent in laboratories, clinical studies or externship settings. Every program places the student in a high-tech learning environment, beginning in the first academic year.

But work and study are not the only attractions at OIT. An active student government provides the framework for a broad selection of student activities, from a weekly newspaper and an FM radio station to pre-professional clubs. Outdoor activities take advantage of OIT's location in Klamath Falls, where the Cascades meet the high desert. OIT offers a fitness center and a variety of intramural and intercollegiate athletic opportunities.

Upper Klamath Lake and the Cascade Mountains are visible from every campus building and the abundance of windows in each facility allows students and faculty to enjoy the year-round sunshine.

What's New in This Year's Fact Book

Enhancements are continually made to the OIT Fact Book in order to meet the needs of its readership. Three new tables have been added this year – OIT Crime Statistics (1.18), Minors Awarded (2.2.13, part 2), and One Year Retention Rates of New Transfers (8.3).

Significant changes were made to the following two tables.

- Table 5.4 has been renamed State Appropriation and Tuition Revenue Per FTE and includes state appropriation received by the institution in its entirety (based on the annual IPEDS Finance Survey). Prior to this edition, this table included revenue from state appropriation assigned specifically to the Education and General (E&G) fund accounts.
- Table 8.3 (One-Year Retention Rates of First-time Freshmen) now includes just **full-time** students in an effort to reconcile our reporting with systemwide reports. In previous editions of the Fact Book, both full- and part-time first-time freshmen were included.

FTE (full-time equivalent) enrollment has been added to two tables in the student section. Table 2.1.1/Part 2 now includes FTE enrollment by location and 2.1.1.1 provides a 5-year trend by department of both credit hours and annual FTE.

SOURCE: OIT Public Affairs and Institutional Research offices

1.2
Oregon Institute of Technology
MISSION STATEMENT

Oregon Institute of Technology, the only public institute of technology in the Pacific Northwest, provides degree programs in engineering and health technologies, management, communications, and applied sciences that prepare students to be effective participants in their professional, public and international communities. Six objectives are central to our mission.

1. Provide degree programs that enable graduates to obtain the knowledge and skills necessary for immediate employment.
2. Enable students to be effective communicators, responsible citizens, and lifelong learners by assisting them in the development of critical thinking and problem solving skills, and ethical and cultural awareness.
3. Offer continuing and distance education and advanced professional studies to meet the emerging needs of today's citizens.
4. Provide informational and technical expertise to regional, state, national, and global publics in applied research.
5. Develop and maintain partnerships with public and private institutions, business and industry, and government agencies to ensure quality programs that meet the needs of students and the organizations that employ them.
6. Provide statewide access to address the needs of the Oregon workforce.

(This statement of mission and objectives for OIT was approved by the State Board of Higher Education on December 19, 1999.)

SOURCE: Oregon Institute of Technology General Catalog 2006-07

1.3.1 OIT – PORTLAND OPERATIONS

Established in 1983, the Oregon Institute of Technology in Portland offers bachelor's degrees in selected technologies, workshops, seminars, short courses and contract/customized training for individuals and companies in the upper Willamette Valley. The degree programs currently offered are: bachelor's degrees in Electronics Engineering Technology, Operations Management, Information Technology, Management Information Systems, Manufacturing Engineering Technology, Mechanical Engineering Technology, Renewable Energy Systems, and Software Engineering Technology; and a master's program in Manufacturing Engineering Technology. In addition, Clinical Laboratory Science and Emergency Medical Services programs are offered in collaboration with Oregon Health & Science University. Professional development offerings and contract training can be provided for any of the technical or professional areas for which the university has resources and expertise.

All programs are focused toward serving working adult students, with courses offered on an extended day schedule and "Weekend University" format. All courses are taught by OIT faculty members, both full-time and industry professionals serving as adjuncts, and credit offerings directly parallel the courses offered at the Klamath Falls campus. Most general education courses required in the degree programs are offered in cooperation with Eastern Oregon University, Portland State University and regional community colleges. Classes are available at OIT's two Portland campuses, the Metro Center (East) and the CAPITAL Center (West), at various community colleges and at selected industrial facilities.

OIT Portland East (Metro Center)
7726 S.E. Harmony Rd.
Portland, OR 97222

OIT Portland West (CAPITAL Center)
18640 NW Walker Rd., Suite 1001
Beaverton, OR 97006

Phone: 503-725-3066
Web Site: www.oit.edu/portland

SOURCE: OIT Portland Operations

**Table 1.3.2
OIT - PORTLAND OPERATIONS -- STATISTICAL PROFILE 2005-06**

Students Enrolled Fall 2005 -- 389

(NOTE: See Table 2.1.10 for 10-year enrollment trend)

Male	303	78%	<i>Majors:</i>		
Female	86	22%	Manufacturing ET	28	7%
American Indian/Alaska Native	4	1%	Mfg. ET (Master's)	3	1%
Asian/Pacific Islander	51	13%	Mechanical ET	50	13%
Black/African American	16	4%	Software ET	70	18%
Hispanic	18	5%	Electronics ET	34	9%
White, Non-Hispanic	255	66%	Renewable Energy	7	2%
International Student	9	2%	Information Technology	28	7%
Unknown	36	9%	Mgmt Info Systems	26	7%
Full-time (12+ hours)	112	29%	Operations Mgmt	10	3%
Part-time (0-11 hours)	277	71%	Clinical Lab Science	46	12%
<i>Geographic Source:</i>			Paramedic Education	23	6%
Oregon	358	92%	General Studies	64	16%
Other States	30	8%			
Foreign Countries	1	0.3%	Average Age		32.4

Degrees Awarded 2005-06

TOTAL DEGREES AWARDED - 86

Associate Degrees	24	<i>Bachelor's Degrees (continued)</i>	
Computer Engr Tech	2	Software Engr Tech	11
Paramedic Education	22	Electronics Engr Tech	3
Bachelor's Degrees	62	Information Technology	5
Manufacturing Engr Tech	7	Management Information Systems	2
Mechanical Engr Tech	9	Operations Management	3
		Clinical Laboratory Science	22

Faculty and Staff (October 2005)

	<i>Metro/CAPITAL Centers*</i>	<i>OHSU Joint Programs</i>	<i>Renewable Energy Systems/OREC**</i>	<i>TOTAL</i>
Executive/Administrative/Managerial	2	--	1	3
Faculty (full-time appointed)	6	5	1	12
Faculty (part-time appointed)	1	4	--	5
Faculty (part-time adjunct)	26	1	1	28
Other Professional	21	--	--	21
Technical & Paraprofessional	--	--	--	0
Clerical/Secretarial	3	--	1	4
Skilled Crafts	1	--	--	1
Service/Maintenance	2	--	--	2
Total Faculty and Staff	62	10	4	76

* Includes Oregon Manufacturing Extension Program (OMEP) employees--1 Exec/Admin/Managerial and 19 Other Professional.

** Does not include two Renewable Energy Systems/OREC faculty who are located at the Klamath campus.

SOURCES: Fact Book tables 2.1.1 and 2.1.7.1 (student data); Graduate Analysis by Degree and Major/JZRRDEG (degrees awarded); and HRIS/IPEDS files (faculty/staff data).

1.4

OREGON STATE BOARD OF HIGHER EDUCATION

The Oregon State Board of Higher Education, the statutory governing board of the seven-campus Oregon University System, is composed of 11 members appointed by the Governor and confirmed by the Oregon State Senate. Nine members are appointed for four-year terms; two members are students and are appointed for two-year terms.

<i>Board Members</i>	<i>Term Expires</i>
Donald Blair	2008
Gerry Blakney*	2007
Bridget Burns (ex officio)*	2007
Kirby Dyess	2008
Henry Lorenzen	2007
Adriana Mendoza*	2007
Dalton Miller-Jones	2008
Tim Nesbitt	2008
John von Schlegell	2009
Gretchen Schuette	2008
Howard Sohn	2009
Tony Van Vliet	2009

* Student members

SOURCE: Oregon University System (OUS) Chancellor's Office (information as of 8/2/2006)

1.5
OREGON UNIVERSITY SYSTEM

President

Daniel O. Bernstine
Khosrow Fatemi
Martha Anne Dow
Dave Frohnmayer
Mary Cullinan
Edward John Ray
John P. Minahan (Interim)

Institution

Portland State University
Eastern Oregon University
Oregon Institute of Technology
University of Oregon
Southern Oregon University
Oregon State University
Western Oregon University

Affiliated Institution

Joseph E. Robertson, M.D.

Oregon Health and Science University

SOURCE: OUS Chancellor's Office

1.6
Oregon Institute of Technology
HISTORY AT A GLANCE

- July 14, 1947** - Under the direction of Winston Purvine, the first classes were held in a deactivated World War II Marine Corps hospital three miles northeast of Klamath Falls.
- 1951** - KTEC radio went on the air.
- 1953** - Associates degree programs in the Surveying and Structural Engineering Technologies were first accredited by the Engineers' Council for Professional Development.
- 1956** - KOTI television opened on campus.
- 1957** - The Institute was made a separate division of the State Board of Education and an engineering study was begun to determine whether to repair or rebuild the facilities.
- 1960** - The institute was transferred to the jurisdiction of the State Board of Higher Education.
- 1962** - The institute was accredited by the Northwest Association of Secondary and Higher Schools.
- 1964** - The campus moved to newly constructed buildings on a geothermal site overlooking Upper Klamath Lake.
- 1966** - The institute received authorization to grant bachelor's degrees.
- 1970** - Bachelor's degree programs first accredited by ABET.
- 1975** - Geo-Heat Center established.
- 1976** - Kenneth Light appointed President upon Purvine's retirement.
- 1983** - Larry Blake appointed President and the Metro Center was established in Portland.
- 1984** - Small Business Development Center established.
- 1988** - Portland Metro Center moved to its first permanent facilities on Southeast Harmony Road near Clackamas Town Center.
- 1989** - State Board authorized OIT to grant master's degrees.
- 1991** - Lawrence J. Wolf appointed President.
- 1995** - Master's degree first offered.
- 1998** - Martha Anne Dow appointed President.

SOURCE: Oregon Institute of Technology General Catalog 2006-07

1.7
Oregon Institute of Technology
UNIVERSITY PRESIDENTS

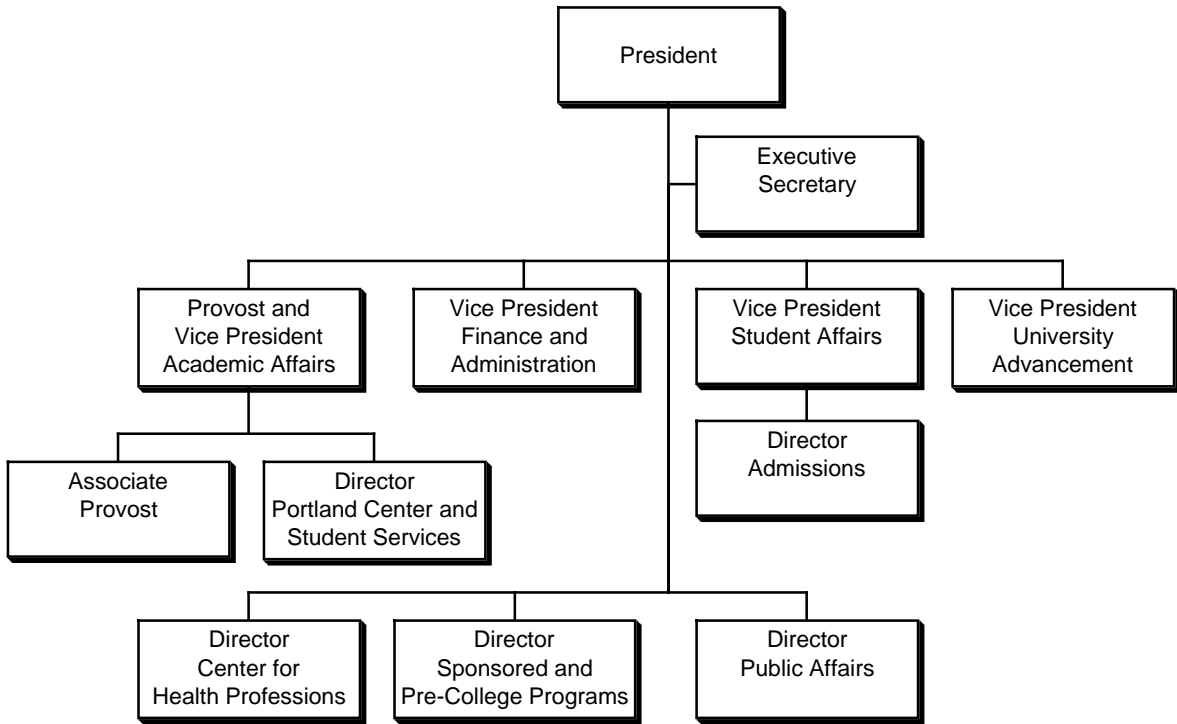
Winston D. Purvine	1947-1976
Kenneth F. Light	1976-1982
Larry J. Blake	1983-1990
Lawrence J. Wolf	1991-1997
Martha Anne Dow	1998-

Interim Presidents

W.M. Douglass	1982-1983
W.T. Lemman	1990-1991

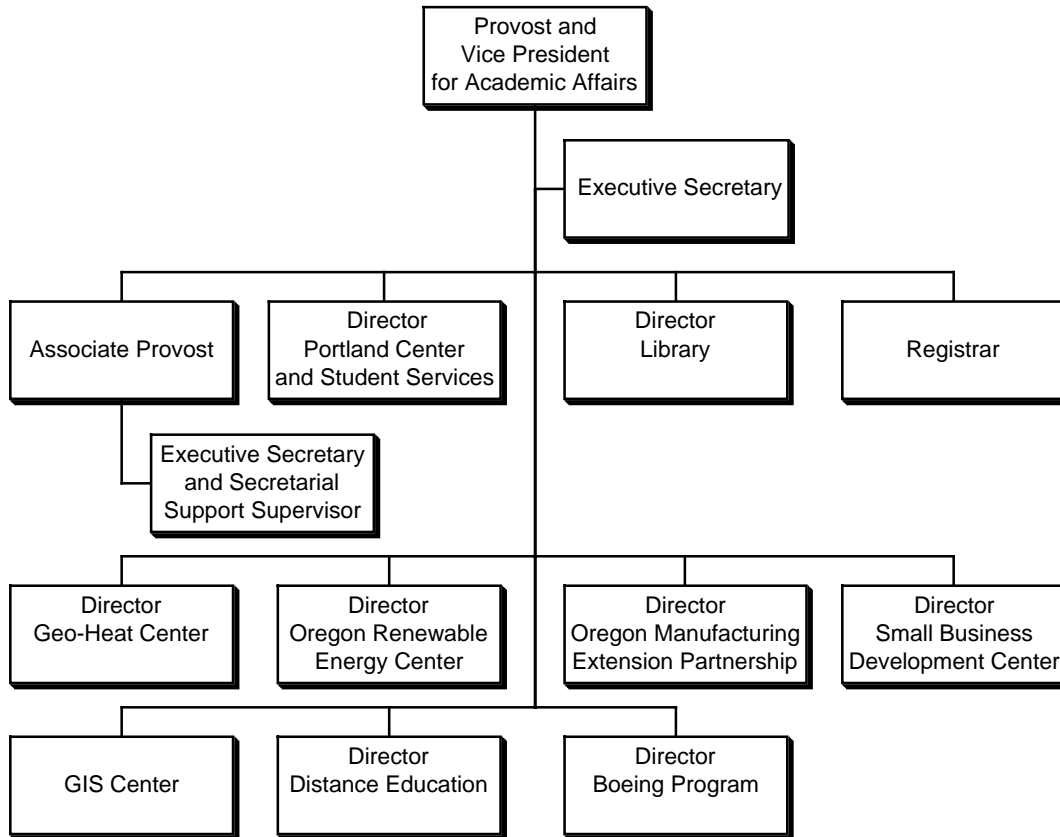
SOURCE: OIT President's Office

Chart 1.8.1
Oregon Institute of Technology
PRESIDENT'S OFFICE AND CABINET



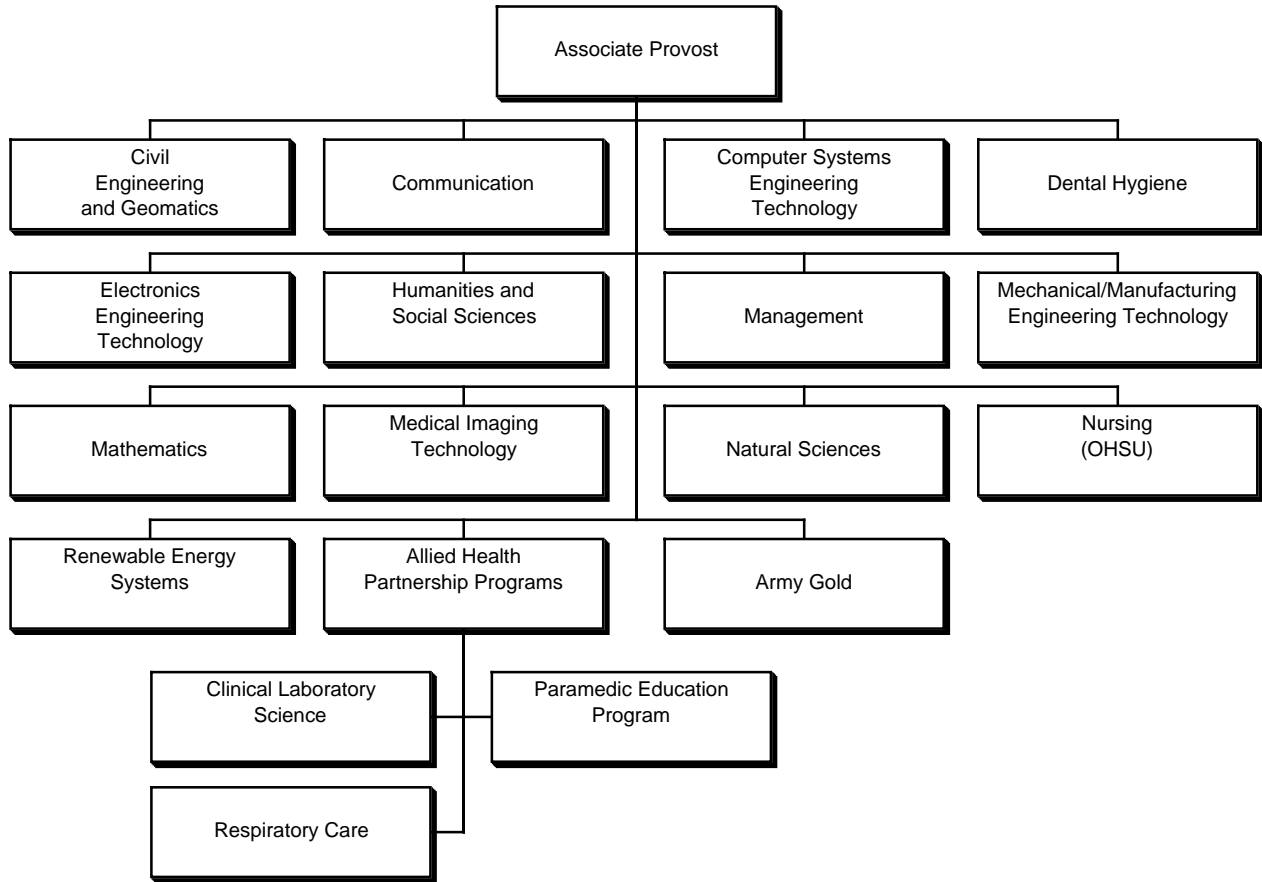
SOURCE: OIT Office of Human Resources (information as of July 2006)

**Chart 1.8.2
Oregon Institute of Technology
PROVOST AND VICE PRESIDENT FOR ACADEMIC AFFAIRS' STAFF**



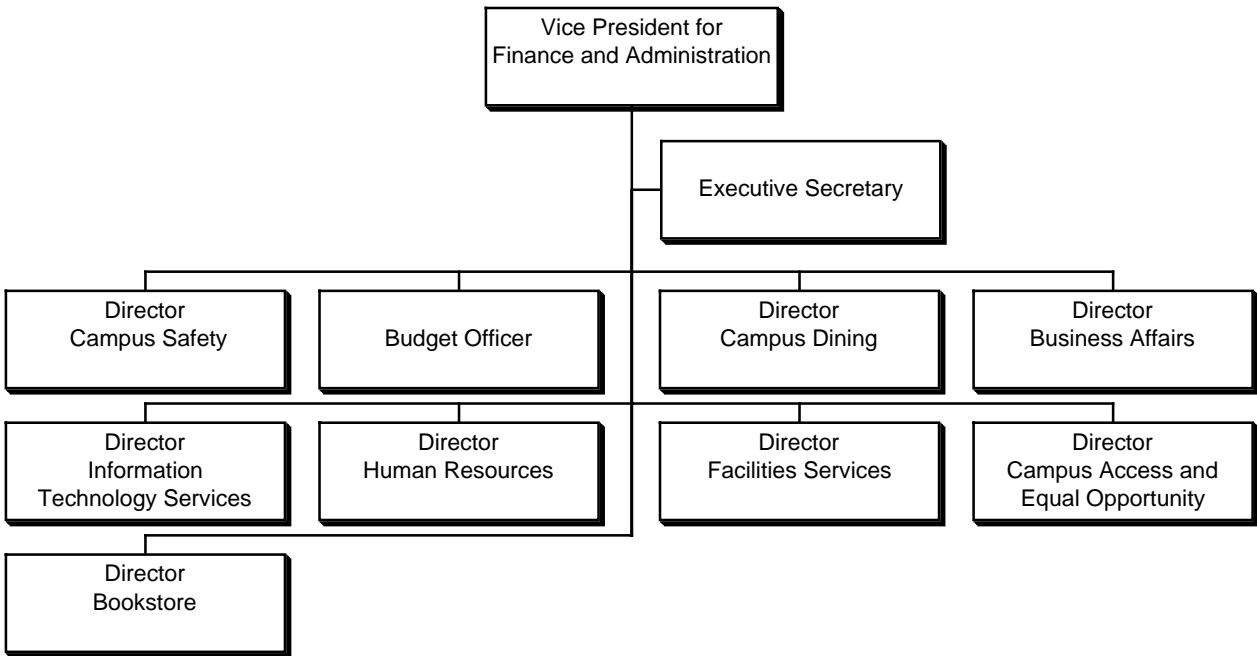
SOURCE: OIT Office of Human Resources (information as of July 2006)

**Chart 1.8.3
Oregon Institute of Technology
ACADEMIC DEPARTMENTS**



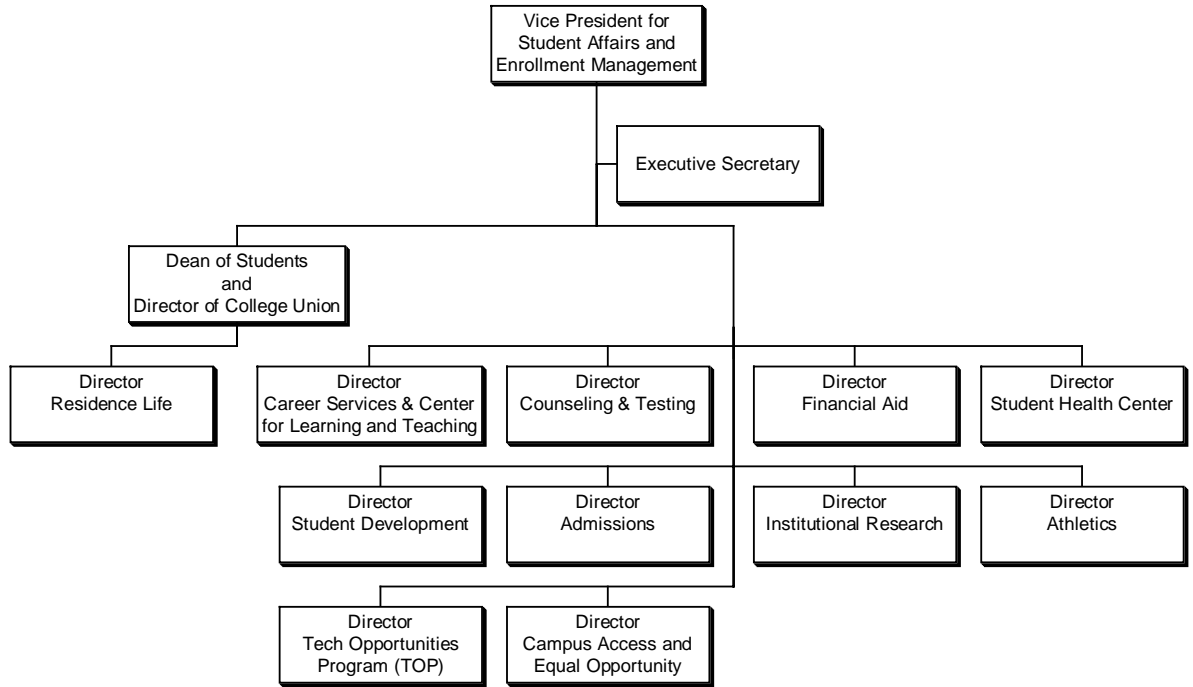
SOURCE: OIT Office of Human Resources (information as of July 2006)

Chart 1.8.4
Oregon Institute of Technology
VICE PRESIDENT FOR FINANCE AND ADMINISTRATION'S STAFF



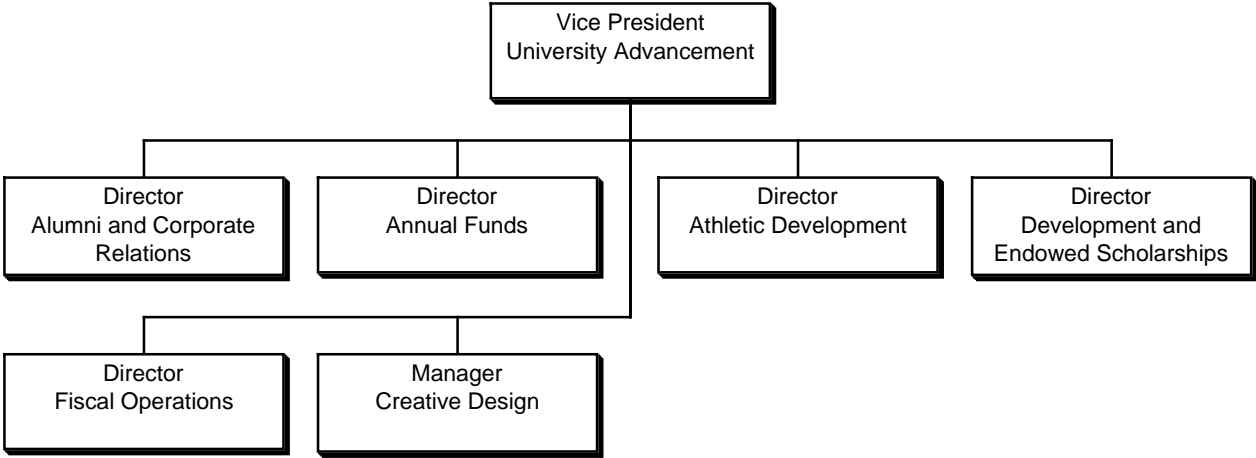
SOURCE: OIT Office of Human Resources (information as of July 2006)

Chart 1.8.5
Oregon Institute of Technology
VICE PRESIDENT FOR STUDENT AFFAIRS AND ENROLLMENT MANAGEMENT'S STAFF



SOURCE: OIT Office of Human Resources (information as of August 2006)

Chart 1.8.6
Oregon Institute of Technology
VICE PRESIDENT FOR UNIVERSITY ADVANCEMENT STAFF



SOURCE: OIT Office of Human Resources (information as of July 2006)

1.9
Oregon Institute of Technology
GENERAL ADMINISTRATION

Martha Anne Dow	President
David M. Woodall	Vice President for Academic Affairs and Provost
William R. ("Bob") Nettles	Vice President for Finance and Administration
Michael Slinker	Vice President for University Advancement
Joseph P. Holliday	Vice President for Student Affairs and Enrollment Mgmt.
Gary Naseth	Associate Provost
Palmer Muntz, Director	Admissions
Cheri Daily, Director	Alumni and Corporate Relations
Michael Schell, Director	Athletics
Nathan Mead, Director	Boeing Program
Haldane Harris	Budget Officer
Jeannie Steckley, Director	Business Affairs
Ron McCutcheon, Director	Campus Access and Equal Opportunity
Christopher Dalla, Director	Campus Dining
Ed Guy, Director	Campus Safety
David Westhart, Director	Career Services
Denise Honzel, Director	Center for Health Professions
David Westhart, Director	Center for Learning and Teaching
Erin Foley, Director	College Union
John Hancock, Director	Counseling and Testing
Erin Foley	Dean of Students
Beth Murphy, Director	Distance Education
David Ebsen, Director	Facilities Services
Tracey Lehman, Director	Financial Aid
John Lund, Director	Geo-Heat Center
Shelby Wilsdon, Director	Human Resources
Andy Abbott, Chief Information Officer	Information Technology Services
Anji Duchi, Director	Institutional Research
Marita Kunkel, Director	Library
Tom Chester, Director	Oregon Renewable Energy Center (OREC)
Lane Hickman, Director	Bookstore (Paper Owl)
Richard Swanson, Director	Portland Center and Student Services
Valeree Lane, Director	Public Affairs
Marla Edge, Registrar	Registrar's Office
Mandi Clark, Director	Residence Life
Jamie Albert, Director	Small Business Development Center
Gayle Yamasaki, Director	Sponsored and Pre-College Programs
Jane Rider, Director	Student Development
Marilyn Gran-Moravec, Director	Student Health Center
Sherie Etges, Director	Tech Opportunities Program (TOP)

SOURCE: OIT General Catalog 2006-07 with updates from OIT Human Resources

1.10
Oregon Institute of Technology
SCHOOL AND DEPARTMENT ADMINISTRATIVE STRUCTURE
2006-07

School of Engineering, Technology, and Management

Civil Engineering
Computer Systems Engineering Technology
Electronics Engineering Technology
Geomatics
Management
Mechanical/Manufacturing Engineering Technology

Dr. Joseph E. Sarsenski, Chair
Calvin K. Caldwell, Chair
Andrew J. Sedlock, Chair
Jack A. Walker, Chair
Dr. Charles R. Jones, Chair
Dr. Timothy L. Brower, Chair

School of Health, Arts, and Sciences

Allied Health Partnerships
Communication
Dental Hygiene
Humanities and Social Sciences
Mathematics
Medical Imaging Technology
Natural Sciences

Marian S. Ewell, Chair
Dr. John R. Puckett, Chair
Terri A. Armstrong, Chair
Lynda M. Baker, Chair
Timothy Thompson, Chair
LeAnn Maupin, Chair
Dr. Ronald H. Swisher, Chair

OHSU School of Nursing at OIT

Dr. Carol Craig, Chair

SOURCE: OIT Provost Office (as of 8/30/2006)

Table 1.11
LIBRARY COLLECTIONS
2000-01 to 2004-05 (Fiscal Years)

Category	2000-01	2001-02	2002-03	2003-04	2004-05
Book Collection					
Volumes*	149,700	148,457	152,057	153,775	154,284
Titles (print)	91,627	90,839	91,289	92,621	92,819
Titles (electronic)	1,384	1,312	1,312	4,600	4,652
Government Documents (uncataloged items)	9,451	16,303	16,226	16,226	15,000
Current Serials					
Print	1,789	1,833	2,130	2,142	2,145
Electronic	266	268	321	398	420
Microform (units)	154,803	158,569	162,916	165,337	160,873
Manuscripts and Archives (in linear feet)	32.5	32.5	32.5	32.5	32.5
Cartographic Materials	5,882	5,984	6,166	6,188	6,264
Audiovisual Materials**	2,023	935	994	1,009	1,059

* Books, bound periodicals, cataloged documents.

** Center for Learning & Teaching and Media Services statistics are excluded.

SOURCE: OIT Library

Table 1.12
LIBRARY SERVICES
2000-01 to 2004-05 (Fiscal Years)

Category	2000-01	2001-02	2002-03	2003-04	2004-05
Circulation Transactions - General*	11,395	11,675	12,645	7,641	6,354
Circulation Transactions - Reserve*	2,412	3,224	2,455	1,822	1,003
Circulation Transactions - Electronic*	n/a	n/a	n/a	57,124	63,397
Interlibrary Loans Made to Other Libraries	3,946	4,933	4,628	4,084	3,920
Interlibrary Loans Received from Other Libraries	3,066	3,675	2,950	2,234	2,138
Information Services to Groups					
Number of Instruction Sessions	76	103	112	118	93
Number of Students Served	1,088	1,290	1,688	2,300	2,407
Library Service in a Typical Week During Academic Year**					
Public Service Hours per Typical Week	76.5	75.5	75.5	75.5	75.5
Gate Count per Typical Week	3,268	3,654	4,278	4,483	3,265
Off-campus access via Proxy Server/Week	n/a	n/a	n/a	417	568
Reference Transactions per Typical Week***	84	93	105	130	115

* Many materials are now accessed electronically rather than checked out; this is reflected in the drop in general and reserve transactions since 1999-00. Electronic transactions reflect computer-generated statistics on the use of books and journals in electronic format.

** October 1 through May 31 excluding breaks.

*** Includes computer searching.

NOTE: Beginning 2001-02, a new formula is used to compile data for this table. Figures for 2000-01 have been revised to reflect the new criteria.

SOURCE: OIT Library

1.13
Oregon Institute of Technology
DEGREE PROGRAMS

Master of Science

Manufacturing Engineering Technology

Bachelor of Science

Applied Mathematics
Applied Psychology
Biology (pending approvals)
Civil Engineering
Clinical Laboratory Science (*joint degree with Oregon Health & Science University [OHSU]*)
Communication Studies
Computer Engineering Technology
Dental Hygiene
Diagnostic Medical Sonography
Echocardiography (*online degree completion*)
Electronics Engineering Technology
Embedded Systems (pending approvals)
Environmental Sciences
Geomatics
Health Sciences
Information Technology, with options in:
 Accounting
 Applications Development
 Business/Systems Analysis
Management, with options in:
 Accounting
 Entrepreneurship/Small Business Management
 Marketing

Bachelor of Science (continued)

Manufacturing Engineering Technology
Mechanical Engineering
Mechanical Engineering Technology
Nuclear Medicine Technology
Nursing (*through OHSU School of Nursing*)
Operations Management
Radiologic Science
Renewable Energy Systems
Respiratory Care (*online degree completion*)
Software Engineering Technology
Vascular Technology

Associate's Degrees

Associate of Applied Science
Dental Hygiene
Emergency Medical Technology-Paramedic (*joint degree with OHSU*)
Respiratory Care
Associate of Arts (Oregon Block Transfer)
Associate of Engineering
Computer Engineering Technology
Electronics Engineering Technology
Manufacturing Engineering Technology (pending approvals)
Software Engineering Technology

Source: OIT General Catalog 2006-07

**1.14
ACADEMIC CALENDAR
2006-07**

	<i>Fall 2006</i>	<i>Winter 2007</i>	<i>Spring 2007</i>
Advance registration	May 15-25	Nov 6-17	Feb 20-Mar 2
Registration (for those not registered in advance)	Sep 20-22	Jan 5	Apr 1-2
New student orientation	Sep 22-24	Jan 5	Apr 1
Fee payment	Sep 25-29	Jan 8-12	Apr 2-6
Classes begin	Sep 25	Jan 8	Apr 2
Last day to use <i>WebREG</i> for registration, add/drops	Sep 26	Jan 9	Apr 3
Last day to pay fees or register without late fees	Sep 29	Jan 12	Apr 6
Late fees begin	Oct 2	Jan 16	Apr 9
Last day to add/register or drop with no record	Oct 6	Jan 19	Apr 13
Last day to withdraw with a "W"	Nov 13	Feb 23	May 18
Last day to withdraw from all courses	Dec 1	Mar 16	Jun 8
Veterans' Day holiday	Nov 10		
Thanksgiving holiday (begins 1:00 pm)	Nov 22-26		
Martin Luther King Jr. holiday		Jan 15	
Memorial Day holiday			May 28
Final exams week	Dec 4-7	Mar 19-22	Jun 11-14
Term ends	Dec 8	Mar 23	Jun 15
Commencement			Jun 16
Grades due from instructors (12 noon)	Dec 11	Mar 26	Jun 18

SOURCE: OIT Web Site (www.oit.edu)

1.16 OIT Partnerships

Oregon Institute of Technology has many forms of partnerships with other colleges and universities that help increase educational opportunity.

Articulation Agreements

OIT maintains agreements with many partner community colleges that facilitate the transfer-ready student from community college programs to programs or majors at OIT. These current articulation agreements are posted on OIT's web site (www.oit.edu).

Advance Credit Program

OIT's Pre-College Program administers the Advance Credit Program (ACP) to encourage students to pursue educational and career goals. ACP consists of college courses taught in the high school by college-level qualified high school instructors. The courses are offered as a part of the regular high-school curriculum with the option of registering for college credit from OIT. An OIT faculty member provides oversight. ACP provides students the opportunity to try college-level courses, gain valuable skills, and develop study habits for college, while earning college credit.

Boeing - Manufacturing Engineering Technology at The Boeing Company

OIT offers Associate, Bachelor and Master of Science degrees in Manufacturing Engineering Technology to employees of the The Boeing Company in the Puget Sound area. Boeing employees enjoy this educational opportunity as part of their employee benefits. Also offered are review classes for the Society of Manufacturing Engineers' CMfgT and CmfGE exams and a certificate of Completion in Composites.

Clackamas Community College

A Bachelor of Science degree in Renewable Energy Systems (RES) is offered in Portland in collaboration with Clackamas Community College. The program is part of OIT's Oregon Renewable Energy Center which has a site at the Clackamas Community College Wilsonville Workforce Training Center. General education courses will be provided by Clackamas Community College, while the Renewable Energy Systems courses will be delivered by OIT at a variety of locations, including the OIT Metro Center, the Clackamas main campus and the Wilsonville Training Center.

Clackamas Community College and OIT maintain other partnerships, including the sharing of physical space on NE Harmony Road in Portland.

Dual Enrollment

Dual enrollment programs are designed to allow qualified students access to OIT and selected community colleges. Dual enrollment students can attend classes (this includes online courses) at either school, use financial aid at both schools, and have the option of using campus facilities and services. The advantages of Dual Enrollment are:

- Lower tuition cost at the community college
- Students work with the community college Advisor and their OIT Advisor at the same time
- One application and one application fee
- Financial Aid applies to both institutions at the same term, for qualified students.
- Increased flexibility in scheduling with access to more classes
- Access to libraries, computer labs, and other services on both campuses

OIT has Dual Enrollment agreements with Portland Community College and Rogue Community College. Several other agreements are pending.

continued

1.16 – OIT Partnerships (continued)

Eastern Oregon University, Information Technology (IT) Minor

OIT offers all courses for the IT minor on-line through the Distance Education Program. Eastern Oregon University will award their students a Minor in IT in conjunction with a bachelor's degree if they take the required courses from OIT and transfer them to EOU.

Klamath Community College

Klamath Community College (KCC) and Oregon Institute of Technology (OIT) developed a joint enrollment program in Fall 1995. The program, designed by representatives of both institutions, cuts through the admissions, registration and financial aid paperwork making it easier for students to take advantage of educational opportunities at both schools. Features of the program are highlighted below:

- *Registration:* KCC students may register in selected OIT classes, using a one-stop registration process at KCC. OIT students may register in KCC classes at KCC.
- *Courses:* Each term, KCC and OIT offer a designated selection of courses to students at both institutions. KCC students pay the community college tuition rate for these courses.
- *Calendars:* KCC and OIT have coordinated academic calendars and schedules.
- *Financial Aid:* Financial aid applications are processed through the institution from which the student ultimately wishes to receive their degree.
- *Additional Services:* OIT provides ID cards, library services and academic support services to KCC students. Other services available to KCC students, based on extra fees, include parking, student health services and fitness center membership.

Registration staffs at both KCC and OIT administer the joint agreement. The two institutions share information regarding joint students, but protect their rights under the Family Educational Rights and Privacy Act. Both KCC and OIT staffs share and verify class rosters and registration status of joint students.

ODS School of Dental Hygiene

Beginning in 2005, OIT will offer an Associate's degree program in La Grande, Oregon in partnership with Eastern Oregon University (EOU) and Oregon Dental Services (ODS). This partnership links private and public entities. The ODS is providing the financial support for this endeavor, EOU is providing support and student services as well as some classes and physical space, and OIT is providing the majority of courses, the clinical oversight, and the degree. Preference for admission into the program is given to students who have completed their prerequisites in total or in part at Eastern Oregon University and are from the following counties: Baker, Gilliam, Grant, Harney, Malheur, Morrow, Umatilla, Union, Wallowa and Wheeler. Course delivery is a combination of onsite labs and lectures, as well as some online courses that will be taught by OIT dental hygiene and communication faculty. Once the students have completed 18 months in the degree program, they will be prepared to take both their national and state board exams. Upon completion of their AAS degree, students will be able to apply and be admitted to OIT's on-line bachelor degree completion program.

Oregon Health Sciences University

OIT has partnerships with OHSU in the delivery of three programs. In the Portland area, OIT offers a baccalaureate degree in Clinical Laboratory Science and an associate's degree in Emergency Medical Services (Paramedic) in collaboration with OHSU. OIT's Klamath Falls campus hosts OHSU's Nursing Program. Student and support services are provided by the hosting campus in these cases.

Rogue Community College

Rogue Community College hosts the OIT Associate degree program in Respiratory Care at their Medford, Oregon location. Students are provided support and student services by Rogue. They can also complete their preparatory work at Rogue. OIT's bachelor's degree in Manufacturing Engineering Technology has a similar relationship with Rogue at the White City location.

**1.17
KLAMATH COUNTY DEMOGRAPHICS**

Population		By Age	
Klamath County	65,098	Under 5	4,166
		5-18	16,795
		19-65	34,437
Klamath Falls (urban growth area)	45,000	Over 65	9,700
Klamath Falls (city limits)*	19,694	Median Age	38.3
Bonanza	411	By Ethnicity**	
Chiloquin	716	White	87.3%
Malin	631	African American	0.6%
Merrill	894	Native American	4.2%
		Asian	0.8%
		Other	3.4%
		Hispanic***	7.8%

* Included in Klamath Falls (urban growth area)

** The total percentage is greater than 100% because individuals may report more than one race.

*** Persons of Hispanic origin can be of any race, and are included in the other categories.

SOURCE: Klamath County Chamber of Commerce

Table 1.18
OIT CRIME STATISTICS
2003 to 2005

<i>Offense Type</i>	<i>2003</i>	<i>2004</i>	<i>2005</i>
<i>Criminal Offenses</i>			
Murder/Non-negligent Manslaughter	0	0	0
Negligent Manslaughter	0	0	0
Forcible Sex Offenses	0	0	0
Non-forcible Sex Offenses	1 *	0	0
Aggravated Assault	0	0	1
Assault	2	0	0
Arson	0	0	0
Robbery	0	0	0
Burglary	8 *	14	2
Motor Vehicle Theft	0	0	0
<i>Hate Crimes</i>	0	0	0
<i>Disciplinary Actions</i>			
Liquor Law Violations	66	61	51
Drug Violations	7	3	3
Weapons Possession	2	1	3
<i>Non-required Crimes**</i>			
Theft	27 *	28	27
Criminal Mischief	15	10	12
Criminal Trespass	0	3	4
Disorderly Conduct	3	4	2

* One arrest made

** Reporting of these crimes is not mandated by the Clery Act.

SOURCE: OIT Campus Safety (Campus Safety Activity Report)