

FACT BOOK 2005-2006

SECTION 2: STUDENTS

Enrollment (2.1)

Table 2.1.1	Part 1: Enrollment Profile by Location, Fall 2005 Part 2: Headcount and FTE Enrollment by Location and Program/Type of Course, 2002 to 2005
Table 2.1.2	Headcount Distribution by Gender, Fall Terms 2001 to 2005
Table 2.1.3	Enrollment by Residency Status & Fee Policy, 2001 to 2005
Table 2.1.4	Headcount Distribution by Student Level, Fall Terms 2001 to 2005
Table 2.1.5	Full-time/Part-time Headcount, Fall Terms 2001 to 2005
Table 2.1.6	Headcount Distribution by Ethnicity, Fall Terms 2001 to 2005
Table 2.1.7	Enrollment by Major, Ethnicity and Gender, Fall 2005
Table 2.1.7.1	Enrollment by Major and Location, Fall 2005
Table 2.1.8	Enrollment by Major, Fall Terms 2001 to 2005
Table 2.1.9	FTE Enrollment by Student Level, 2005-06
Graph 2.1.9a	Enrollment History, Fall Terms 2001-02 to 2005-06 (bar graph)
Graph 2.1.9b	Enrollment History, Winter Terms 2001-02 to 2005-06 (bar graph)
Graph 2.1.9c	Enrollment History, Spring Terms 2001-02 to 2005-06 (bar graph)
Table 2.1.10	Headcount and FTE by Campus/Location, Fall Terms 1996 to 2005
Table 2.1.11	Credit Hours and Annual FTE by Course Department, 2001-02 to 2005-06
Table 2.1.12	Unduplicated Headcount in Credit Courses, 2000-01 to 2004-05
Table 2.1.13	Distance Education Enrollment Summary, 2005-06

Student Profile (2.2)

Table 2.2.1	Average Age by Student Level and Gender, Fall 2005
Table 2.2.2	Headcount Distribution by Age, Fall Terms 2001 to 2005
Table 2.2.3	Enrollment by Geographic Origin, Fall Terms 2001 to 2005
Table 2.2.4	Students from Oregon by County, Fall 2005
Table 2.2.5	Enrollment by Previous Attendance, 2001 to 2005
Table 2.2.6	Average High School GPA of First-time Freshmen by Gender and Residency, 2001 to 2005
Table 2.2.7	Enrollment of First-time Freshmen by High School GPA and Gender, Fall 2005
Table 2.2.8	Enrollment of First-time Freshmen by High School GPA and Residency, Fall 2005
Table 2.2.9	First-time Freshmen SAT Test Score Statistics, Fall 2005

FACT BOOK 2005-2006

SECTION 2: STUDENTS (continued)

Table 2.2.10	Admissions Summary, Fall 2005
Table 2.2.11	Grade Distribution by Department, Fall 2005
Table 2.2.12	Overall Grade Distribution, 2001 to 2005
Table 2.2.13	Part 1: Degrees Awarded by Major, 2001-02 to 2005-06 Part 2: Minors Awarded Since Inception, 1998-99 Through 2005-06
Table 2.2.14	Degrees Awarded by Ethnicity and Gender, 2005-06
Table 2.2.15	Freshman Enrollment from Major Feeder Areas, Fall 2004 and Fall 2005

Student Activities and Achievements (2.3)

Table 2.3.1	Owls Compete in NAIA
Table 2.3.2	Intercollegiate Athletics 2006-07
Table 2.3.3	Athletic Achievements 2005-06
Table 2.3.4	OIT Student Clubs and Organizations
Table 2.3.5	Student Awards, 2005-06

Table 2.1.1 (Part 1)
Enrollment Profile by Location*
Fall 2005 -- 4th Week

Category	Fall 2005				Fall 2004	Fall 2005 Compared to Fall 2004	
	Klamath**	Portland Operations***	Other****	Total		#	%
Total Headcount Enrollment	2,265	389	697	3,351	3,373	-22	-0.7%
Gender							
Male	1,182	303	284	1,769	1,779	-10	-0.6%
Female	1,083	86	413	1,582	1,594	-12	-0.8%
Ethnicity							
Amer. Indian/Alaska Native	42	4	17	63	57	6	10.5%
Asian/Pacific Islander	96	51	27	174	164	10	6.1%
Black/African American	11	16	9	36	35	1	2.9%
Hispanic	82	18	35	135	134	1	0.7%
White, Non-Hispanic	1,873	255	511	2,639	2,710	-71	-2.6%
International Student	18	9	3	30	22	8	36.4%
Unknown	143	36	95	274	251	23	9.2%
Student Level							
Freshman	470	73	23	566	614	-48	-7.8%
Sophomore	426	16	38	480	511	-31	-6.1%
Junior	422	31	37	490	546	-56	-10.3%
Senior	657	142	115	914	878	36	4.1%
Post-baccalaureate	68	38	23	129	114	15	13.2%
Non-admitted UG	216	86	453	755	703	52	7.4%
Graduate Master's	6	3	8	17	7	10	142.9%
Residency							
Resident	2,016	338	488	2,842	2,906	-64	-2.2%
Non-resident	249	51	209	509	467	42	9.0%
Geographic Source							
Klamath/Lake Counties	851	5	249	1,105	1,254	-149	-11.9%
Other Oregon Counties	1,130	353	244	1,727	1,640	87	5.3%
Other States	272	30	203	505	464	41	8.8%
Foreign Countries	12	1	1	14	15	-1	-6.7%
Full-/Part-Time							
Full-time	1,695	112	80	1,887	1,990	-103	-5.2%
Part-time	570	277	617	1,464	1,383	81	5.9%
Age							
Mean	25.5	32.4	26.1	26.4	26.0	0.4	
Median	22.3	30.2	18.0	22.6	22.3	0.3	
Mode	20	26	17	20	19	1	
Total FTE Enrollment*	1,844.5	211.3	259.7	2,315.5	2,409.5	-94.0	-3.9%

* Based on course location. Headcount - A student is counted only once even if enrolled at more than one location, and is reported under Klamath if enrolled in at least one Klamath class. FTE - FTE is reported where each course is located.

** In addition to traditional on-campus courses, Klamath Campus includes High School Transition program, remedial, KCC, externship, field experience, and continuing education classes.

*** Portland Operations includes Metro/CAPITAL Centers and OHSU Joint Programs.

**** Other includes Boeing, high school Advanced College Placement (statewide), Respiratory Care at Rogue CC, and Klamath degree completion programs.

SOURCE: Student Extract and SCARF IR Table

Table 2.1.1 (Part 2)
Headcount* and FTE Enrollment by Location and Program/Type of Course**
2002 to 2005 (Fall Terms)

Location/Program	Fall	Fall	Fall	Fall	2005 Compared to 2004	
	2002	2003	2004	2005	Number	Percent
Total Headcount Enrollment***	3,139	3,236	3,373	3,351	-22	-0.7%
Klamath	2,374	2,392	2,455	2,265	-190	-7.7%
Regular/Traditional Classes	2,153	2,189	2,188	1,968	-220	-10.1%
High School Transition	43	35	42	30	-12	-28.6%
Remedial Courses	0	1	0	0	0	--
KCC	111	79	76	74	-2	-2.6%
Other Continuing Educ.	30	57	108	140	32	29.6%
OHSU Nursing	37	31	41	53	12	29.3%
Portland Operations	415	365	317	389	72	22.7%
Metro & CAPITAL Centers	296	284	247	287	40	16.2%
Ft. Lewis	51	4	0	0	0	--
OHSU Joint Programs	68	77	70	96	26	37.1%
Renewable Energy Systems	0	0	0	6	6	--
Other	350	479	601	697	96	16.0%
Boeing	51	53	91	103	12	13.2%
Degree Completion	36	44	75	118	43	57.3%
Dental Hygiene at LaGrande	0	0	0	26	26	--
High School ACP (KF & Other)	263	382	411	406	-5	-1.2%
Respiratory Care at Rogue CC	0	0	24	44	20	83.3%
Total FTE Enrollment	2,379.9	2,413.1	2,409.5	2,315.5	-94.0	-3.9%
Klamath	2,035.5	2,053.4	2,037.4	1,844.5	-192.9	-9.5%
Regular/Traditional Classes	1,942.1	1,948.8	1,890.6	1,702.9	-187.7	-9.9%
High School Transition	11.3	11.3	13.5	8.5	-5.0	-37.0%
Remedial Courses	31.5	26.7	13.9	13.1	-0.8	-5.8%
KCC	31.3	19.5	21.5	18.9	-2.6	-12.1%
Other Continuing Educ.	19.3	47.1	97.9	101.1	3.2	3.3%
OHSU Nursing	0.0	0.0	0.0	0.0	0.0	--
Portland Operations	235.1	222.3	175.6	211.3	35.7	20.3%
Metro & CAPITAL Centers	120.3	132.8	98.9	116.5	17.6	17.8%
Ft. Lewis	37.5	2.2	0.0	0.0	0.0	--
OHSU Joint Programs	77.3	87.3	76.7	90.8	14.1	18.4%
Renewable Energy Systems	0.0	0.0	0.0	4.0	4.0	--
Other	109.3	137.4	196.5	259.7	63.2	32.2%
Boeing	30.7	27.6	42.9	42.1	-0.8	-1.9%
Degree Completion	10.7	11.7	21.1	35.0	13.9	65.9%
Dental Hygiene at LaGrande	0.0	0.0	0.0	25.8	25.8	--
High School ACP (KF & Other)	67.9	98.1	104.2	105.7	1.5	1.4%
Respiratory Care at Rogue CC	0.0	0.0	28.3	51.1	22.8	80.6%

* Under Headcount Enrollment, a student is counted only once even if enrolled in two different types of courses.

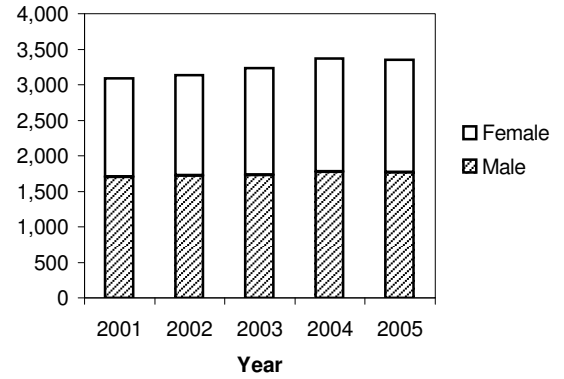
** Location and program are based on courses rather than rate codes of students.

*** Fall 2002 through 2004 headcount figures have been adjusted to reflect a change in methodology. For students enrolled in a combination of Klamath and Portland distance education courses, unduplicated headcount is now reported under the student's home campus.

SOURCE: Student Extract and SCARF tables (4th Week)

Table 2.1.2
HEADCOUNT DISTRIBUTION BY GENDER
Fall Terms 2001 to 2005

Gender	2001	2002	2003	2004	2005
Male	1,701	1,719	1,733	1,779	1,769
Female	1,387	1,420	1,503	1,594	1,582
TOTAL	3,088	3,139	3,236	3,373	3,351



SOURCE: Student Extract, Fall Terms -- 4th Week

**Table 2.1.3
ENROLLMENT BY RESIDENCY STATUS & FEE POLICY*
2001 to 2005 (Fall Terms, 4th Week)**

Based on Residency Status*	Resident		Non-Resident		Total	
	Number	Percent	Number	Percent	Number	Percent
Fall 2001						
Undergraduate	2,638	85.48%	448	14.52%	3,086	100.00%
Graduate	2	100.00%	0	0.00%	2	100.00%
Total	2,640	85.49%	448	14.51%	3,088	100.00%
Fall 2002						
Undergraduate	2,729	87.02%	407	12.98%	3,136	100.00%
Graduate	3	100.00%	0	0.00%	3	100.00%
Total	2,732	87.03%	407	12.97%	3,139	100.00%
Fall 2003						
Undergraduate	2,852	88.16%	383	11.84%	3,235	100.00%
Graduate	0	0.00%	1	100.00%	1	100.00%
Total	2,852	88.13%	384	11.87%	3,236	100.00%
Fall 2004						
Undergraduate	2,900	86.16%	466	13.84%	3,366	100.00%
Graduate	6	85.71%	1	14.29%	7	100.00%
Total	2,906	86.15%	467	13.85%	3,373	100.00%
Fall 2005						
Undergraduate	2,834	85.00%	500	15.00%	3,334	100.00%
Graduate	8	47.06%	9	52.94%	17	100.00%
Total	2,842	84.81%	509	15.19%	3,351	100.00%

Based on Fee Policy*	Resident & Other Fee Policies**		Non-Resident		Total	
	Number	Percent	Number	Percent	Number	Percent
Fall 2001						
Undergraduate	2,912	94.36%	174	5.64%	3,086	100.00%
Graduate	2	100.00%	0	0.00%	2	100.00%
Total	2,914	94.37%	174	5.63%	3,088	100.00%
Fall 2002						
Undergraduate	2,989	95.31%	147	4.69%	3,136	100.00%
Graduate	3	100.00%	0	0.00%	3	100.00%
Total	2,992	95.32%	147	4.68%	3,139	100.00%
Fall 2003						
Undergraduate	3,088	95.46%	147	4.54%	3,235	100.00%
Graduate	1	100.00%	0	0.00%	1	100.00%
Total	3,089	95.46%	147	4.54%	3,236	100.00%
Fall 2004						
Undergraduate	3,211	95.40%	155	4.60%	3,366	100.00%
Graduate	7	100.00%	0	0.00%	7	100.00%
Total	3,218	95.40%	155	4.60%	3,373	100.00%
Fall 2005						
Undergraduate	3,189	95.65%	145	4.35%	3,334	100.00%
Graduate	17	100.00%	0	0.00%	17	100.00%
Total	3,206	95.67%	145	4.33%	3,351	100.00%

* Residency Status identifies whether or not a student has established Oregon residency. Fee Policy is the type of tuition a student is assessed. A non-resident may not always pay non-resident tuition/fees.

** Includes students enrolled for less than 9 state support credits (Part-time Fee Policy) and those assessed resident tuition. Students reported in this category may not always be Oregon residents.

SOURCES: Data based on residency status - Student Extract

Data based on fee policy - OUS Institutional Research Services (Enrollment Report ERTE-01 Part 1)

Table 2.1.4
HEADCOUNT DISTRIBUTION BY STUDENT LEVEL
Fall Terms 2001 to 2005

<i>Student Level</i>	<i>2001</i>	<i>2002</i>	<i>2003</i>	<i>2004</i>	<i>2005</i>
Freshman	850	662	751	614	566
Sophomore	465	540	468	511	480
Junior	438	531	517	546	490
Senior	723	801	807	878	914
Post-Bac/Non-Graduate	21	60	99	114	129
Non-Admit Undergraduate	589	542	593	703	755
Master's	2	3	1	7	17
TOTAL	3,088	3,139	3,236	3,373	3,351

* The timing of transfer credit evaluation can impact undergraduate student level counts. Admitted students whose transfer credits have not been evaluated and accepted by OIT are considered freshman. If transfer evaluations are completed prior to 4th week, higher counts in the sophomore, junior, and senior levels and lower freshman headcount will result.

SOURCE: Student Extract (4th Week)

Table 2.1.5
FULL-TIME/PART-TIME HEADCOUNT
Fall Terms 2001 to 2005

	<i>2001</i>	<i>2002</i>	<i>2003</i>	<i>2004</i>	<i>2005</i>
Full-time*	1,946	2,001	2,047	1,990	1,887
Men	1,111	1,145	1,141	1,107	1,023
Women	835	856	906	883	864
Part-time**	1,142	1,138	1,189	1,383	1,464
Men	590	574	592	672	746
Women	552	564	597	711	718
TOTAL	3,088	3,139	3,236	3,373	3,351

* Undergraduates 12 or more hours; graduates 9 or more hours.

** Undergraduates 0-11 hours; graduates 0-8 hours.

SOURCE: Student Extract (4th Week)

Table 2.1.6
HEADCOUNT DISTRIBUTION BY ETHNICITY
Fall Terms 2001 to 2005

<i>Ethnicity</i>	<i>2001</i>	<i>2002</i>	<i>2003</i>	<i>2004</i>	<i>2005</i>
American Indian/Alaskan Native	47	52	54	57	63
Asian/Pacific Islander	164	174	152	164	174
Black/African American	36	42	32	35	36
Hispanic	120	125	146	134	135
White, Non-Hispanic	2,481	2,485	2,598	2,710	2,639
International Student	22	21	26	22	30
Unknown	218	240	228	251	274
TOTAL	3,088	3,139	3,236	3,373	3,351

SOURCE: Student Extract (4th Week)

Table 2.1.7 - ENROLLMENT BY MAJOR, ETHNICITY, AND GENDER -- FALL 2005

Major	American Indian/ Alaska Native		Asian/Pacific Islander		Black/African American		Hispanic		White Non-Hispanic		International Student		Unknown		TOTALS		
	M	F	M	F	M	F	M	F	M	F	M	F	M	F	M	F	ALL
Engineering:	7	1	58	6	15	1	28	7	694	59	15	-	66	8	883	82	965
Civil Engineering	2	1	4	1	-	-	2	1	81	15	-	-	7	1	96	19	115
Geomatics	1	-	3	-	-	-	-	-	34	5	-	-	5	2	43	7	50
Manufacturing Engr Tech	-	-	15	2	7	1	6	-	85	14	2	-	13	2	128	19	147
Manufacturing Engr Tech (Master's)	-	-	1	-	-	-	-	-	11	1	-	-	4	-	16	1	17
Mechanical Engr Tech	1	-	11	2	1	-	7	2	152	7	6	-	13	2	191	13	204
Computer Engr Tech	-	-	5	-	-	-	4	1	103	6	4	-	6	-	122	7	129
Software Engr Tech	3	-	9	1	6	-	5	3	144	6	2	-	12	-	181	10	191
Electronics Engr Tech	-	-	9	-	1	-	3	-	77	5	1	-	5	1	96	6	102
Renewable Energy Systems	-	-	1	-	-	-	1	-	7	-	-	-	1	-	10	-	10
Management:	3	-	14	7	4	4	9	4	162	86	4	2	16	6	212	109	321
Information Technology	-	-	6	1	2	1	2	1	51	7	1	-	4	-	66	10	76
Mgmt Info Systems	1	-	4	4	2	1	2	-	31	7	1	1	6	-	47	13	60
MIS: Mgmt Actg	-	-	-	-	-	-	1	-	-	4	-	-	-	-	1	4	5
Mgmt: Accounting	-	-	-	1	-	-	-	-	8	21	1	-	-	1	9	23	32
Mgmt: Marketing	-	-	-	1	-	1	1	1	9	15	-	-	3	3	13	21	34
Mgmt: Small Business	1	-	2	-	-	1	1	2	29	24	1	-	3	1	37	28	65
Office Systems Tech	-	-	-	-	-	-	-	-	-	6	-	-	-	-	-	6	6
Operations Management	1	-	2	-	-	-	2	-	34	2	-	1	-	1	39	4	43
Health Technologies:	6	14	27	39	4	3	10	25	238	703	2	3	21	60	308	847	1,155
Clinical Lab Science	-	1	2	9	-	-	-	1	7	23	-	-	1	2	10	36	46
Pre-Dental Hygiene	-	3	2	-	-	-	-	3	1	45	-	1	1	7	4	59	63
Dental Hygiene	-	1	-	3	-	1	-	1	1	72	-	-	-	2	1	80	81
Dental Hygiene (Joint EOU)	-	-	-	-	-	-	-	2	-	22	-	-	-	2	-	26	26
Dental Hygiene Outreach	-	-	-	1	-	-	-	-	1	10	-	-	-	3	1	14	15
Echocardiography (Outreach)	-	1	2	-	2	-	-	-	10	29	-	-	-	6	14	36	50
Health Sciences	1	2	5	1	1	-	-	-	15	39	-	-	2	2	24	44	68
Pre-Medical Imaging	3	1	5	5	1	-	3	6	51	104	-	-	3	9	66	125	191
Radiologic Science (RDSC)	1	2	4	3	-	-	3	1	44	66	1	-	3	4	56	76	132
RDSC Outreach	1	-	-	-	-	-	-	-	9	4	1	1	-	-	11	5	16
RDSC: Nuclear Medicine Tech	-	-	-	1	-	-	1	1	27	24	-	-	2	1	30	27	57
Ultrasound: Sonography	-	-	-	3	-	-	-	-	5	54	-	-	1	5	6	62	68
Ultrasound: Vascular	-	1	4	6	-	-	-	1	20	50	-	-	3	4	27	62	89
Ultrasound: Vascular Outreach	-	-	-	1	-	1	1	1	4	22	-	-	-	3	5	28	33
Pre-Nursing	-	1	-	3	-	1	-	2	9	64	-	-	-	2	9	73	82
Nursing	-	-	-	-	-	-	-	2	9	39	-	-	-	3	9	44	53
Paramedic Education	-	-	1	1	-	-	2	1	8	3	-	-	3	4	14	9	23
Pre-Respiratory Care	-	-	1	-	-	-	-	-	-	3	-	-	-	-	1	3	4
Respiratory Care	-	1	1	2	-	-	-	3	12	25	-	1	1	1	14	33	47
Respiratory Care Outreach	-	-	-	-	-	-	-	-	5	5	-	-	1	-	6	5	11
Arts and Sciences:	11	21	8	15	3	2	22	30	276	421	4	-	42	55	366	544	910
Applied Psychology	1	8	1	3	2	-	5	7	35	82	1	-	2	4	47	104	151
Associate of Arts	1	-	-	-	-	-	-	2	4	4	1	-	-	-	6	6	12
Communication Studies	-	1	1	1	1	-	-	1	26	30	1	-	-	-	29	33	62
Environmental Sciences	1	-	-	-	-	-	-	-	13	8	-	-	-	1	14	9	23
General Studies	8	12	6	11	-	2	17	20	198	297	1	-	40	50	270	392	662
TOTALS	27	36	107	67	26	10	69	66	1,370	1,269	25	5	145	129	1,769	1,582	3,351

SOURCE: Student Extract

**Table 2.1.7.1
Enrollment by Major and Location*
Fall 2005 -- 4th Week**

Major	Fall 2005				Fall 2,004	Fall 2005 Compared to Fall 2004	
	Klamath	Portland Operations**	Other***	Total		#	%
<i>SCHOOL OF ENGINEERING, TECHNOLOGY, AND MANAGEMENT</i>							
Engineering:	671	192	102	965	1,005	-40	-4.0%
Civil Engineering	115	-	-	115	118	-3	-2.5%
Geomatics	50	-	-	50	45	5	11.1%
Manufacturing Engineering Tech.	25	28	94	147	145	2	1.4%
Manufacturing Engr. Tech. (Master's)	6	3	8	17	7	10	142.9%
Mechanical Engineering Tech.	154	50	-	204	196	8	4.1%
Computer Engineering Tech.	129	-	-	129	173	-44	-25.4%
Software Engineering Tech.	121	70	-	191	222	-31	-14.0%
Electronics Engineering Tech.	68	34	-	102	99	3	3.0%
Renewable Energy Systems	3	7	-	10	-	10	****
Management:	256	64	1	321	378	-57	-15.1%
Information Technology	48	28	-	76	87	-11	-12.6%
Management Information Systems	34	26	-	60	95	-35	-36.8%
MIS/Mgmt. Accounting	5	-	-	5	12	-7	-58.3%
Mgmt./Accounting	32	-	-	32	40	-8	-20.0%
Mgmt./Marketing	34	-	-	34	38	-4	-10.5%
Mgmt./Small Business	64	-	1	65	67	-2	-3.0%
Office Systems Tech.	6	-	-	6	8	-2	-25.0%
Operations Management	33	10	-	43	30	13	43.3%
Accounting Certificate	-	-	-	-	1	-1	-100.0%
<i>SCHOOL OF HEALTH, ARTS AND SCIENCES</i>							
Health Technologies:	899	69	187	1,155	1,078	77	7.1%
Clinical Lab Science	-	46	-	46	45	1	2.2%
Pre-Dental Hygiene	63	-	-	63	57	6	10.5%
Dental Hygiene	80	-	1	81	55	26	47.3%
Dental Hygiene (Joint EOU)	-	-	26	26	-	26	****
Dental Hygiene Outreach	1	-	14	15	15	0	0.0%
Echocardiography	2	-	48	50	29	21	72.4%
Health Sciences	68	-	-	68	81	-13	-16.0%
Pre-Medical Imaging	190	-	1	191	262	-71	-27.1%
Medical Imaging/RDSC	132	-	-	132	115	17	14.8%
Medical Imaging/RDSC Outreach	1	-	15	16	8	8	100.0%
Medical Imaging/NMT	57	-	-	57	59	-2	-3.4%
Ultrasound/Sonography	68	-	-	68	68	0	0.0%
Ultrasound/Vascular	89	-	-	89	86	3	3.5%
Ultrasound/Vascular Outreach	6	-	27	33	33	0	0.0%
Pre-Nursing	82	-	-	82	74	8	10.8%
Nursing	53	-	-	53	41	12	29.3%
Paramedic Education	-	23	-	23	23	0	0.0%
Pre-Respiratory Care	4	-	-	4	-	4	****
Respiratory Care	3	-	44	47	26	21	80.8%
Respiratory Care (Outreach)	-	-	11	11	1	10	1000.0%
Arts and Sciences:	439	64	407	910	912	-2	-0.2%
Applied Psychology	151	-	-	151	148	3	2.0%
Associate of Arts	12	-	-	12	13	-1	-7.7%
Communication Studies	62	-	-	62	65	-3	-4.6%
Environmental Sciences	23	-	-	23	30	-7	-23.3%
General Studies	191	64	407	662	656	6	0.9%
TOTALS	2,265	389	697	3,351	3,373	-22	-0.7%

* Based on course location.

** Portland Operations includes Metro and CAPITAL Centers, OHSU Joint Programs, and Renewable Energy Systems.

*** Other includes Boeing, Dental Hygiene-LaGrande, high school Advanced College Placement (statewide), Respiratory Care at Rogue CC, and Klamath degree completion programs.

**** Enrollment not reported in this major the previous year.

SOURCE: Student Extract and SCARF/IR Table

**Table 2.1.8
ENROLLMENT BY MAJOR
Fall Terms 2001 to 2005**

<i>Major</i>	<i>2001</i>	<i>2002</i>	<i>2003</i>	<i>2004</i>	<i>2005</i>
SCHOOL OF ENGINEERING, TECHNOLOGY, AND MANAGEMENT					
Engineering:	1,118	1,058	1,020	1,005	965
Civil Engineering	114	101	113	118	115
Geomatics (Surveying)	42	47	45	45	50
Manufacturing Engineering Tech	132	117	119	145	147
Manufacturing Engineering Tech (Master's)	-	-	-	7	17
Mechanical Engineering Tech	151	167	190	196	204
Computer Engineering Tech	208	217	192	173	129
Computer Engineering Tech (Master's)	2	3	1	-	-
Software Engineering Tech	285	262	240	222	191
Electronics Engineering Tech	149	123	117	99	102
Laser Optical Engineering Tech	35	21	3	-	-
Renewable Energy Systems	-	-	-	-	10
Management:	389	394	381	378	321
Information Technology	108	110	90	87	76
Mgmt Information Systems	78	79	95	95	60
MIS: Management Accounting	12	17	19	12	5
Mgmt: Accounting Option	53	39	37	40	32
Mgmt: Marketing Option	43	42	48	38	34
Mgmt: Small Business Option	40	45	53	67	65
Office Systems Tech	34	28	9	8	6
Operations Management	21	34	30	30	43
Certificates (Accounting & Marketing)	-	-	-	1	-
SCHOOL OF HEALTH, ARTS AND SCIENCES					
Health:	679	769	917	1,078	1,155
Pre-Clinical Laboratory Science	-	4	-	-	-
Clinical Lab Science	39	41	45	45	46
Pre-Dental Hygiene	46	41	47	57	63
Dental Hygiene	62	54	50	55	81
Dental Hygiene (Joint EOU)	-	-	-	-	26
Dental Hygiene Outreach	1	9	7	15	15
Echocardiography (Outreach)	-	-	10	29	50
Health Sciences	66	71	87	81	68
Pre-Medical Imaging	99	132	202	262	191
Radiologic Science (RDSC)	85	95	105	115	132
RDSC: Outreach	5	8	8	8	16
RDSC: Nuclear Medicine Tech	28	39	63	59	57
Ultrasound: Sonography	52	64	63	68	68
Ultrasound: Vascular	55	60	69	86	89
Ultrasound: Vascular Outreach	12	17	30	33	33
Pre-Nursing	70	73	67	74	82
Nursing	34	37	31	41	53
Paramedic Education	25	24	33	23	23
Pre-Respiratory Care	-	-	-	-	4
Respiratory Care	-	-	-	26	47
Respiratory Care Outreach	-	-	-	1	11
Arts and Sciences:	902	918	918	912	910
Applied Psychology	185	195	174	148	151
Associate of Arts	13	15	10	13	12
Communication Studies	30	46	56	65	62
Environmental Sciences	40	44	31	30	23
General Studies	634	618	647	656	662
TOTAL	3,088	3,139	3,236	3,373	3,351

SOURCE: Table 2.1.7

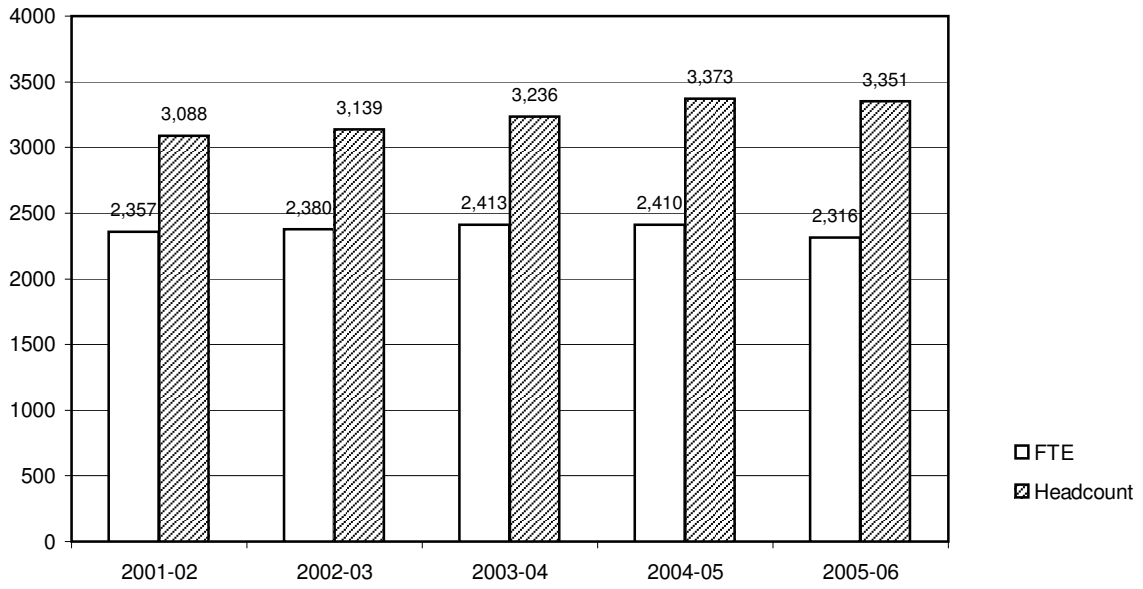
Table 2.1.9
FTE ENROLLMENT BY STUDENT LEVEL
2005-06 (Fall, Winter, Spring Terms - 4th Week)

<i>Student Level</i>	<i>Total Student Credit Hours</i>	<i>Student FTE*</i>	<i>Student Headcount</i>	<i>Average Carrying Load</i>
Fall Term	34,701	2,315.50	3,351	--
Freshman	7,075	471.67	566	12.5
Sophomore	6,201	413.40	480	12.9
Junior	6,200	413.33	490	12.7
Senior	10,740	716.00	914	11.8
Post-bac/Non-graduate	1,404	93.60	129	10.9
<i>Admitted Undergraduate Total</i>	<i>31,620</i>	<i>2,108.00</i>	<i>2,579</i>	<i>12.3</i>
Non-admitted Undergraduate	2,955	197.00	755	3.9
Master's	126	10.50	17	7.4
Winter Term	32,564	2,173.37	3,101	--
Freshman	4,772	318.13	395	12.1
Sophomore	5,675	378.33	436	13.0
Junior	6,676	445.07	529	12.6
Senior	11,974	798.27	1,005	11.9
Post-bac/Non-graduate	1,306	87.07	129	10.1
<i>Admitted Undergraduate Total</i>	<i>30,403</i>	<i>2,026.87</i>	<i>2,494</i>	<i>12.2</i>
Non-admitted Undergraduate	2,015	134.33	586	3.4
Master's	146	12.17	21	7.0
Spring Term	30,618	2,043.28	3,050	--
Freshman	3,614	240.93	305	11.8
Sophomore	5,079	338.60	402	12.6
Junior	5,755	383.67	465	12.4
Senior	12,503	833.53	1,077	11.6
Post-bac/Non-graduate	1,097	73.13	111	9.9
<i>Admitted Undergraduate Total</i>	<i>28,048</i>	<i>1,869.87</i>	<i>2,360</i>	<i>11.9</i>
Non-admitted Undergraduate	2,445	163.00	672	3.6
Master's	125	10.42	18	6.9

* FTE calculation: All undergraduates - total credit hours divided by 15; master's students - total credit hours divided by 12.

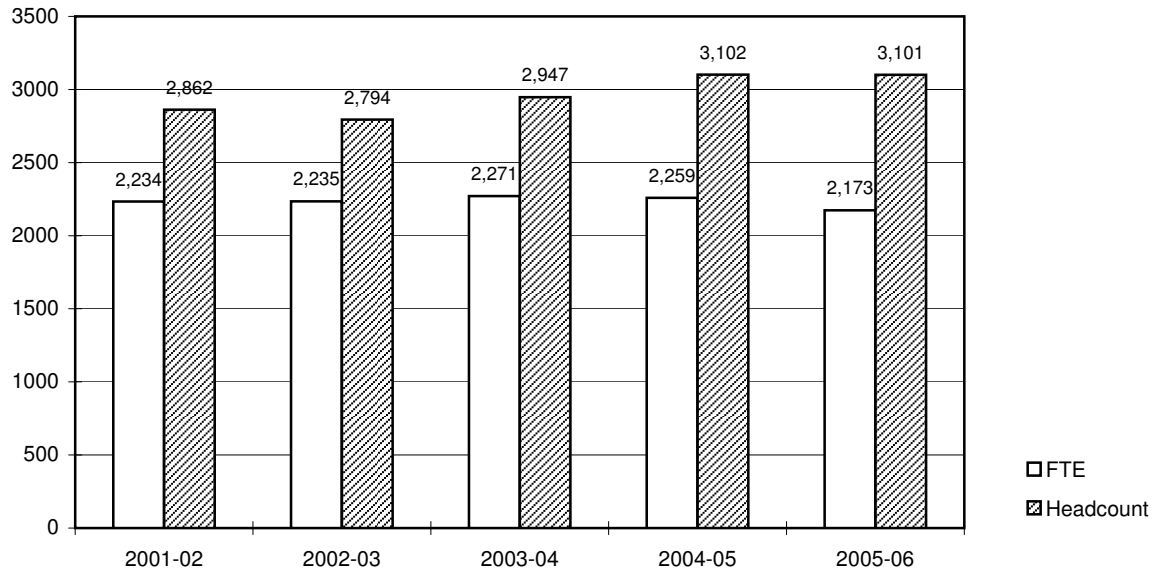
SOURCE: Fall 2005 - Student Extract; Winter and Spring 2006 - SCARF Enrollment Report (ER-01)

Graph 2.1.9a
ENROLLMENT HISTORY
Fall Terms 2001-02 to 2005-06



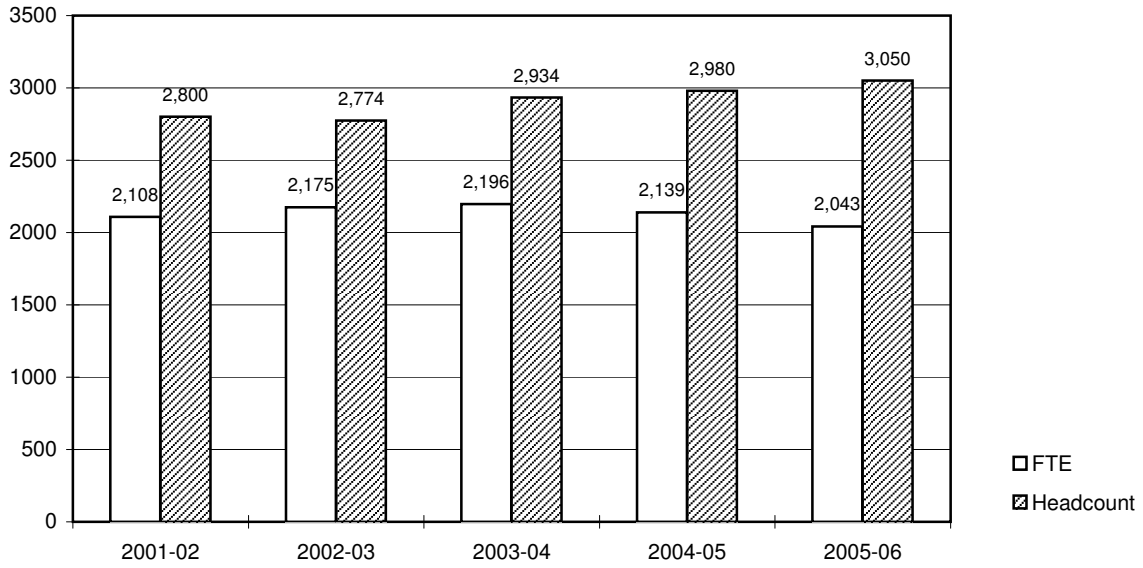
SOURCE: 2001-02 to 2004-05 - SCARF FTE Enrollment Analysis; 2005-06 - Student Extract (Fall Terms--4th Week)

Graph 2.1.9b
ENROLLMENT HISTORY
Winter Terms 2001-02 to 2005-06



SOURCE: 2001-02 to 2004-05 - SCARF FTE Enrollment Analysis; 2005-06 - SCARF Report ER-01 (Winter Terms--4th Week)

Graph 2.1.9c
ENROLLMENT HISTORY
Spring Terms 2001-02 to 2005-06



SOURCE: 2001-02 to 2004-05 - SCARF FTE Enrollment Analysis; 2005-06 - SCARF Report ER-01 (Spring Terms--4th Week)

Table 2.1.10
HEADCOUNT AND FTE BY CAMPUS/LOCATION*
Fall Terms 1996 to 2005 (4th Week)

<i>Fall Term</i>	<i>Klamath**</i>		<i>Portland**</i>		<i>Other**</i>		<i>Total</i>	
	<i>Headcount</i>	<i>FTE</i>	<i>Headcount</i>	<i>FTE</i>	<i>Headcount</i>	<i>FTE</i>	<i>Headcount</i>	<i>FTE</i>
1996	2,152	1,712	187	64			2,339	1,776
1997	2,271	1,827	204	77			2,475	1,904
1998***	2,367	1,901	312	118			2,679	2,019
1999	2,537	2,021	277	103			2,814	2,124
2000	2,512	2,027	330	124			2,842	2,151
2001	2,795	2,237	293	120			3,088	2,357
2002	2,843	2,260	296	120			3,139	2,380
2002++	2,374	2,035.5	415	235.1	350	109.3	3,139	2,379.9
2003++	2,392	2,053.4	365	222.3	479	137.4	3,236	2,413.1
2004++	2,455	2,037.4 +	317	175.6 +	601	196.5 +	3,373	2,409.5
2005	2,265	1,844.5	389	211.3	697	259.7	3,351	2,315.5

* In order to report enrollment based on course location, a redistribution of headcount was made in Fall 2003. Breakdown by campus/location above the solid line is based on student campus code; below the solid line, on course location. Refer to table 2.1.1 (Part 2) for a detailed breakout of the new location categories.

** Beginning 2003, **Klamath** includes traditional courses at the Klamath campus, high school transition, remedial courses, KCC, externship, field experience, other continuing education, and OHSU Nursing (headcount only); **Portland** includes Metro & CAPITAL Centers, OHSU Allied Partnership Programs, Renewable Energy Systems, and Ft. Lewis; and **Other** includes Boeing, high school ACP, degree completion, and Respiratory Care (Rogue CC) classes. Prior to 2003, the OHSU Allied Partnership Programs were reported under Klamath.

*** An on site industry program in the Seattle area was established in 1998 and administered through the Portland campus (note the increase in headcount and FTE). Beginning Fall 1999, the Klamath campus oversees the program and and through 2002, is credited with headcount and FTE generated by these students.

+ Corrections made to previously reported 2004 FTE figures. In the 2004-05 Fact Book, all FTE was reported under the location of the student instead of the course.

++ Headcount listed beneath the solid line has been adjusted to reflect the following change in methodology. If a student is enrolled in a combination of Klamath and Portland **distance education** courses only, their headcount is now reported under the student's home campus.

SOURCES: Fall 1996 to 1998 - SCARF [FTE] and Daily Counts/FTE Report [Headcount]
 Fall 1999 to 2001 - SCARF [FTE] and Student Extracts [Headcount]
 Fall 2002 and forward - Fact Book table 2.1.1 (Part 2)

Table 2.1.11
Credit Hours* and Annual FTE by Course Department**
2001-02 to 2005-06

<i>Course Department</i>	<i>2001-02</i>	<i>2002-03</i>	<i>2003-04</i>	<i>2004-05</i>	<i>2005-06</i>
Credit Hours (Academic Year* Totals)					
School of Engineering, Technology, and Management					
Civil Engineering and Geomatics	3,490	3,622	3,923	4,772	4,537
Computer Systems Engineering Tech	11,361	10,821	9,409	7,315	6,049
Electronics and Laser Engineering Tech	3,100	2,439	2,218	2,065	2,056
Management	13,660	13,752	14,540	14,663	12,226
Manufacturing/Mechanical Engr Tech	4,177	4,344	4,464	4,540	4,273
School of Health, Arts, and Sciences					
Allied Health***	2,716	3,594	3,868	4,493	6,408
Communication	11,345	11,449	12,046	11,720	11,554
Dental Hygiene	3,076	2,657	2,230	2,527	4,307
Humanities and Social Sciences	17,489	17,615	17,618	16,449	14,427
Mathematics	12,643	12,248	12,044	11,248	9,277
Medical Imaging Technology	7,684	9,380	10,968	13,690	13,797
Natural Sciences***	12,580	12,923	13,139	13,382	12,302
Other					
Military Science	85	102	71	50	34
Metro and CAPITAL Centers****	5,785	5,890	5,922	4,896	5,613
TOTAL CREDIT HOURS	109,191	110,836	112,460	111,810	106,860
Annual FTE**					
School of Engineering, Technology, and Management					
Civil Engineering and Geomatics	77.6	80.5	87.2	106.0	100.8
Computer Systems Engineering Tech	252.8	240.5	209.1	162.6	134.4
Electronics and Laser Engineering Tech	68.9	54.2	49.3	45.9	45.7
Management	303.5	305.7	323.1	325.8	271.7
Manufacturing/Mechanical Engr Tech	92.8	96.5	99.2	102.2	96.9
School of Health, Arts, and Sciences					
Allied Health***	60.4	79.9	86.0	99.8	142.4
Communication	252.1	254.4	267.7	260.4	256.8
Dental Hygiene	68.4	59.0	49.6	56.2	95.7
Humanities and Social Sciences	388.6	391.4	391.4	365.6	320.5
Mathematics	280.9	272.2	267.6	250.0	206.2
Medical Imaging Technology	170.8	208.4	243.7	304.2	306.6
Natural Sciences***	279.6	287.2	292.0	297.4	273.4
Other					
Military Science	1.9	2.3	1.6	1.1	0.8
Metro and CAPITAL Centers****	128.6	130.9	131.6	109.1	125.1
TOTAL ANNUAL FTE	2,426.9	2,463.1	2,499.1	2,486.3	2,377.0

* Summer through spring (end-of-term)

** Annual FTE is total academic year credit hours divided by 45 for undergraduates and by 36 for graduates.

*** Allied Health includes Clinical Laboratory Science, Paramedic Education, and Respiratory Care. Clinical Laboratory Science and Paramedic Education were reported under Natural Sciences in previous editions of the Fact Book.

**** Based on course campus code. Includes Renewable Energy Systems beginning 2004-05.

SOURCES: 2001-2002 to 2003-04 - RAM Model Warehouse; 2004-05 - Course Information Download (ZJRK002)
and SCARF REG/SECT Tables; 2005-06 - SCARF IR Table

Table 2.1.12
UNDUPLICATED HEADCOUNT IN CREDIT COURSES*
2000-01 to 2004-05

<i>Type of Course</i>	<i>2000-01</i>	<i>2001-02</i>	<i>2002-03</i>	<i>2003-04</i>	<i>2004-05</i>
Regular	3,288	3,429	3,464	3,576	3,675
Extended**	423	682	611	641	841
Total	3,711	4,111	4,075	4,217	4,516

* Includes all credit-bearing student enrollment, either in regular campus courses (base enrollment) or through self-supported courses (extended enrollment), summer through spring terms. Students enrolled at both the undergraduate and graduate levels are counted twice.

** The "extended" category includes students enrolled only in extended courses (such as continuing education or remedial courses). Students enrolled in regular courses only or a combination of regular and extended courses are counted in the regular category.

SOURCE: OUS Institutional Research Services (ERAN-01 and ERAN-05)

**Table 2.1.13
Distance Education Enrollment Summary
2005-06 (End-of-Term)**

Enrollment in Distance Education Courses									
Student Campus	Course Campus	Summer 2005		Fall 2005		Winter 2006		Spring 2006	
		Duplicated Headcount	FTE*	Duplicated Headcount	FTE*	Duplicated Headcount	FTE*	Duplicated Headcount	FTE*
Klamath	Klamath	648	114.8	811	149.2	882	165.2	820	166.6
Klamath	Portland	14	2.1	1	0.0	12	2.0	7	0.4
Portland	Portland	56	10.7	43	7.5	21	4.5	73	13.6
Portland	Klamath	91	16.1	117	21.1	131	24.8	101	18.0
TOTAL		809	143.7	972	177.8	1,046	196.5	1,001	198.6

Unduplicated Headcount of Students Enrolled in DE Courses									
Student Campus	Summer 2005		Fall 2005		Winter 2006		Spring 2006		
	Number	Percent	Number	Percent	Number	Percent	Number	Percent	
Klamath**	440	83%	522	84%	583	85%	576	82%	
Portland	90	17%	102	16%	105	15%	126	18%	
TOTAL	530	100%	624	100%	688	100%	702	100%	

* FTE calculation: All undergraduates - total credit hours divided by 15; master's students - total credit hours divided by 12.

** Includes Degree Completion, Dental Hygiene-LaGrande, Information Technology Online, and Respiratory Care programs.

NOTE: Duplicated Headcount is the total enrollment in all distance education sections. A student is counted more than once if enrolled in more than one DE class.

SOURCES: Student Extract and SCARF REG/SECT files

Table 2.2.1
AVERAGE AGE BY STUDENT LEVEL AND GENDER
Fall 2005 -- 4th Week

<i>Student Level</i>	<i>Male</i>	<i>Female</i>	<i>Total</i>
Freshman	22.8	22.8	22.8
Sophomore	23.9	24.9	24.4
Junior	25.8	26.5	26.1
Senior	29.9	31.4	30.6
Postbac UG	37.1	32.9	34.8
Non-admitted UG	26.9	21.2	23.8
Master's	39.1	49.8	39.7
ALL STUDENTS	26.9	25.8	26.4

SOURCE: Student Extract

Table 2.2.2
HEADCOUNT DISTRIBUTION BY AGE
Fall Terms 2001 to 2005

Age	2001	2002	2003	2004	2005
18 and under*	564	581	711	706	657
19-20	570	597	589	593	569
21-22	480	506	555	572	525
23-24	270	253	284	317	334
25-29	366	391	358	368	400
30-39	444	436	393	408	457
40-49	295	282	267	304	289
50 and over	86	91	77	100	120
Unknown	13	2	2	5	--
TOTAL	3,088	3,139	3,236	3,373	3,351
Average Age**	26.5	26.4	25.6	26.0	26.4

* Beginning Fall 2003, the number of high school Advanced College Placement students grew significantly resulting in an increase in students aged 18 and under.

** Beginning Fall 2003, average age is calculated based on the exact age of students (years and days). Averages for 2001 and 2002 shown here are based on this new methodology and will differ from previous editions of the Fact Book.

SOURCES: Student Extract, Fall Terms 4th Week
 OUS/Institutional Research ERDD-01 Report (average age Fall 2001 and 2002)

Table 2.2.3
ENROLLMENT BY GEOGRAPHIC ORIGIN*
Fall Terms 2001 to 2005

<i>Geographic Origin</i>	<i>2001</i>	<i>2002</i>	<i>2003</i>	<i>2004</i>	<i>2005</i>
Alaska	18	19	19	15	11
California	110	117	130	133	134
Hawaii	18	18	17	17	22
Idaho	16	11	14	20	13
Oregon	2,631	2,715	2,818	2,894	2,832
Washington	189	174	134	169	197
Other U.S. States	88	70	86	110	128
Foreign Countries	18	15	17	15	14
Unknown Source	0	0	1	0	0
TOTAL	3,088	3,139	3,236	3,373	3,351

* Based on student's address at time of application.

SOURCE: 2001 to 2004 - Enrollment Analysis by Geographic Source (SCARF Report);
2005 - Student Extract, Fall Terms -- 4th Week

Table 2.2.4
STUDENTS FROM OREGON* BY COUNTY
Fall 2005

<u>County</u>	<u>#</u>	<u>%</u>	<u>County</u>	<u>#</u>	<u>%</u>	<u>County</u>	<u>#</u>	<u>%</u>
Baker	6	0.2%	Hood River	5	0.2%	Polk	14	0.5%
Benton	31	1.1%	Jackson	208	7.3%	Sherman	2	0.1%
Clackamas	116	4.1%	Jefferson	17	0.6%	Tillamook	11	0.4%
Clatsop	20	0.7%	Josephine	66	2.3%	Umatilla	27	1.0%
Columbia	31	1.1%	Klamath	1,073	37.9%	Union	16	0.6%
Coos	63	2.2%	Lake	32	1.1%	Wallowa	1	0.04%
Crook	49	1.7%	Lane	107	3.8%	Wasco	13	0.5%
Curry	14	0.5%	Lincoln	11	0.4%	Washington	184	6.5%
Deschutes	190	6.7%	Linn	52	1.8%	Wheeler	2	0.1%
Douglas	71	2.5%	Malheur	7	0.2%	Yamhill	50	1.8%
Gilliam	1	0.04%	Marion	90	3.2%	Unknown County	0	0.0%
Grant	4	0.1%	Morrow	7	0.2%	Total Students		
Harney	6	0.2%	Multnomah	235	8.3%	from Oregon	2,832	

* Based on student's address at time of application.

SOURCE: Student Extract

Table 2.2.5
ENROLLMENT BY PREVIOUS ATTENDANCE
2001 to 2005 (Fall Terms -- 4th Week)

<i>Previous Attendance</i>	<i>2001</i>	<i>2002</i>	<i>2003</i>	<i>2004</i>	<i>2005</i>
<i>Continuing w/o Interruption</i>	1,674	1,791	1,820	1,880	1,850
<i>Returning After Absence</i>	277	238	277	179	187
<i>New Admits from High School or GED</i>	385	367	358	321	265
Oregon High Schools	293	295	296	282	222
Other States	62	50	46	29	39
Foreign H.S.	2	1	5	5	1
GED	28	20	11	5	3
Unknown High School	--	1	--	--	--
<i>New Admits from Colleges & Universities</i>	329	356	355	450	452
Other OUS Institutions	31	45	42	44	43
Oregon Community Colleges	121	199	185	248	238
Other Oregon Colleges	3	2	7	3	7
Other States	124	97	91	98	105
Foreign Colleges	--	--	--	7	5
Unknown College Source	50	13	30	50	54
<i>New Non-Admits</i>	423	387	426	543	597
TOTAL	3,088	3,139	3,236	3,373	3,351

SOURCE: OUS Institutional Research Services (Report ERTE-01 Part 2)

Table 2.2.6
AVERAGE HIGH SCHOOL GPA OF FIRST-TIME FRESHMEN
by Gender & Residency
2001 to 2005 (Fall Terms -- 4th Week)

	<i>2001</i>	<i>2002</i>	<i>2003</i>	<i>2004</i>	<i>2005</i>
<i>Gender</i>					
Male	3.21	3.24	3.27	3.38	3.44
Female	3.43	3.42	3.47	3.49	3.58
<i>Residency</i>					
Resident	3.28	3.30	3.36	3.44	3.53
Non-resident	3.39	3.24	3.33	3.29	3.36
<i>All First-Time Freshmen</i>	<i>3.29</i>	<i>3.30</i>	<i>3.36</i>	<i>3.43</i>	<i>3.51</i>

SOURCE: OUS Institutional Research Services

Table 2.2.7
ENROLLMENT OF FIRST-TIME FRESHMEN BY HIGH SCHOOL GPA AND GENDER
Fall 2005 -- 4th Week

<i>High School GPA</i>	<i>Male</i>	<i>Female</i>	<i>Total</i>
3.75 and above	37	50	87
3.50 - 3.74	23	25	48
3.25 - 3.49	32	28	60
3.00 - 3.24	23	18	41
2.75 - 2.99	10	3	13
2.50 - 2.74	6	1	7
2.25 - 2.49	1	0	1
2.00 - 2.24	0	0	0
Less than 2.00	0	0	0
GED Admits	1	2	3
No GPA Reported	4	1	5
TOTAL	137	128	265
<i>Average GPA</i>	<i>3.44</i>	<i>3.58</i>	<i>3.51</i>

SOURCE: OUS Institutional Research Services

Table 2.2.8
ENROLLMENT OF FIRST-TIME FRESHMEN BY HIGH SCHOOL GPA AND RESIDENCY
Fall 2005 -- 4th Week

<i>High School GPA</i>	<i>Resident</i>	<i>Non-Resident</i>	<i>Total</i>
3.75 and above	83	4	87
3.50 - 3.74	43	5	48
3.25 - 3.49	52	8	60
3.00 - 3.24	35	6	41
2.75 - 2.99	11	2	13
2.50 - 2.74	6	1	7
2.25 - 2.49	1	0	1
2.00 - 2.24	0	0	0
Less than 2.00	0	0	0
GED Admits	3	0	3
No GPA Reported	4	1	5
TOTAL	238	27	265
<i>Average GPA</i>	<i>3.53</i>	<i>3.36</i>	<i>3.51</i>

SOURCE: OUS Institutional Research Services

Table 2.2.9
FIRST-TIME FRESHMEN SAT TEST SCORE STATISTICS
Fall 2005 -- 4th Week

<i>Gender</i>	<i>Middle 50% Range of Scores</i>			<i># with Scores</i>
	<i>Math</i>	<i>Verbal</i>	<i>Combined</i>	
Male	510-630	470-600	980-1230	116
Female	460-570	440-560	910-1110	106
ALL	480-610	450-580	940-1180	222

SOURCE: OUS Institutional Research Services

**Table 2.2.10
ADMISSIONS SUMMARY
Fall 2005**

<i>Admit Status</i>	<i>Freshman</i>	<i>Transfer</i>	<i>Postbac</i>	<i>Graduate</i>	<i>Total</i>
Admitted	569	504	67	2	1,142
Active Admits	316	373	42	2	733
Cancelled Admits*	253	131	25	0	409
Denied	74	24	8	0	106
Total Completed Applications	643	528	75	2	1,248
Pending	113	69	9	1	192
Pending Applications	9	7	3	1	20
Cancelled Pending Apps*	104	62	6	0	172
TOTAL APPLICATIONS	756	597	84	3	1,440

* Students who will not be attending OIT, but who submitted applications.

SOURCE: Characteristics by Application Status (ZJRA036); report generated 10/24/2005.

Table 2.2.11
GRADE DISTRIBUTION BY DEPARTMENT*
Fall 2005

<i>Department</i>	<i>Percent of Total Grades Given</i>							<i>Total Grades Given</i>
	<i>A</i>	<i>B</i>	<i>C</i>	<i>D</i>	<i>F</i>	<i>W</i>	<i>Other**</i>	
Allied Health***	46.6	29.6	6.8	0.2	0.0	0.2	16.6	459
Civil Engineering	32.9	28.9	17.9	4.3	6.7	4.6	4.8	374
Communication	41.8	28.7	11.0	2.9	4.7	7.8	3.1	898
Computer Engineering	44.5	27.6	14.2	3.1	3.7	5.0	1.9	641
Dental Hygiene	72.0	23.7	2.3	0.0	0.3	0.3	1.5	393
Electronics Engineering	43.4	29.4	11.9	7.2	5.1	3.0	0.0	235
Humanities/Social Sciences	43.5	29.8	13.4	3.3	4.1	4.5	1.2	1,257
Management	43.0	30.3	12.0	3.5	3.5	5.1	2.5	847
Manufacturing Engineering	42.0	25.0	11.0	5.0	1.0	2.0	14.0	100
Mathematics	23.6	23.4	20.3	11.0	9.0	12.7	0.1	726
Mechanical Engineering	45.3	23.8	15.8	5.0	1.7	3.7	4.7	298
Medical Imaging	51.1	34.2	8.9	1.0	0.7	1.5	2.5	874
Natural Sciences	37.4	27.9	16.5	5.3	5.1	6.8	1.0	1,245
Metro/CAPITAL Centers****	53.4	22.2	10.3	1.1	3.1	4.2	5.8	554
INSTITUTIONAL TOTAL	43.3	28.2	12.8	3.7	3.9	5.1	3.1	8,901

* Excludes Military Science, Physical Education, Distance Education, and other continuing education classes.

** Includes Incomplete, In Progress, Pass, and Audit grades.

*** Includes Clinical Lab Science, Paramedic, and Respiratory Care classes.

**** Prior to Fall 2004, included courses with a Metro department code; beginning Fall 2004, includes courses with a Metro campus code.

SOURCE: Course Extract

Table 2.2.12
OVERALL GRADE DISTRIBUTION*
2001 to 2005 (Fall Terms)

<i>Grade</i>	<i>Percent of Total Grades Given</i>				
	<i>2001</i>	<i>2002</i>	<i>2003</i>	<i>2004</i>	<i>2005</i>
A	40.8	44.4	41.8	43.0	43.3
B	27.5	26.5	26.4	27.1	28.2
C	13.2	12.3	13.6	13.6	12.8
D	3.7	3.3	3.6	3.4	3.7
F	4.4	4.2	4.0	4.0	3.9
W	8.0	7.4	8.3	6.5	5.1
Other**	2.4	2.0	2.2	2.4	3.1
TOTAL	9,588	10,211	10,320	9,645	8,901

* Excludes Military Science, Physical Education, Distance Education, and other continuing education classes.

** Includes Incomplete, In Progress, Pass and Audit grades.

SOURCE: Table 2.2.11

Table 2.2.13 (Part 1)
DEGREES AWARDED BY MAJOR
2001-02 to 2005-06

<i>Degree/Program</i>	<i>2001-02</i>	<i>2002-03</i>	<i>2003-04</i>	<i>2004-05</i>	<i>2005-06</i>
Master of Science in Engineering Technology	--	4	2	--	--
Computer Engineering Technology	--	4	2	--	--
Bachelor of Science	360	365	408	496	461
Arts and Sciences					
Applied Psychology	36	48	45	54	46
Communication Studies	--	2	9	13	13
Environmental Sciences	5	4	6	7	6
Engineering					
Civil Engineering	31	20	18	25	20
Geomatics (Surveying)	14	10	7	10	7
Manufacturing Engineering Technology	30	18	25	17	22
Mechanical Engineering Technology	14	14	30	27	32
Computer Engineering Technology	18	9	17	20	28
Software Engineering Technology	41	44	47	48	47
Electronics Engineering Technology	29	20	16	12	19
Laser Optical Engineering Technology	1	5	5	2	1
Diesel Power Technology*	--	--	--	1	--
Health					
Clinical Lab Science	--	19	23	18	22
Dental Hygiene	18	25	17	17	27
Dental Hygiene Outreach	4	1	2	6	5
Echocardiography	--	--	--	--	1
Health Sciences	9	10	10	11	7
Radiologic Science (RDSC)	18	23	23	34	34
Radiologic Science Outreach	--	1	2	3	1
RDSC: Nuclear Med Tech	10	5	11	21	15
Respiratory Care Outreach	--	--	--	--	2
Ultrasound: Sonography	14	19	15	23	16
Ultrasound: Vascular	12	11	14	21	23
Ultrasound: Vascular Outreach	2	1	1	4	8
Management					
Information Technology	3	10	15	19	9
Management Information Systems	15	16	19	35	11
MIS: Management Accounting	1	2	3	3	2
Management: Accounting Option	12	6	8	2	5
Management: Marketing Option	12	6	10	19	12
Management: Small Business Option	9	10	6	15	13
Operations Management (Industrial Mgmt)	2	6	4	9	7
Total Associate Degrees	76	79	85	74	80
Associate of Arts	22	17	19	19	14
Associate of Applied Science	38	41	56	36	43
Engineering					
Diesel Power Technology*	--	--	--	1	--
Health					
Dental Hygiene	32	30	20	1	--
Paramedic Education	--	--	26	29	22
Respiratory Care	--	--	--	--	19
Management					
Office Systems Technology	6	11	10	5	2
Associate of Engineering	16	21	10	19	23
Computer Engineering Technology	7	6	4	5	10
Electronics Engineering Technology	4	4	3	5	2
Software Engineering Technology	5	11	3	9	11
TOTAL DEGREES AWARDED	436	448	495	570	541

* Discontinued program

SOURCE: Table 2.2.14

Table 2.2.13 (Part 2)

**MINORS AWARDED SINCE INCEPTION
1998-99 through 2005-06**

Minor	1998-99	1999-00	2000-01	2001-02	2002-03	2003-04	2004-05	2005-06
Applied Mathematics	-	-	3	7	10	16	14	28
Business	-	-	-	4	16	26	41	22
International Business	-	-	-	-	-	2	2	-
International Relations	-	-	-	-	1	6	9	-
Management Information Systems	-	-	-	-	1	2	7	2
Medical Information Systems	-	-	-	-	-	-	1	-
Psychology	-	-	-	3	1	2	12	11
Technical Communication	6	5	10	7	4	13	10	2
TOTAL	6	5	13	21	33	67	96	65

SOURCE: Minors Awarded by Academic Year (ZJRR165)

**Table 2.2.14
DEGREES AWARDED BY ETHNICITY AND GENDER
2005-06**

Degree/Program	American Indian		Asian/Pacific		Black/African		Hispanic		White		International		Unknown		TOTALS		
	Alaska Native		Islander		American				Non-Hispanic		Student				M	F	ALL
	M	F	M	F	M	F	M	F	M	F	M	F	M	F	M	F	ALL
Bachelor of Science	2	2	14	12	2	2	9	9	202	169	5	-	24	9	258	203	461
Arts and Sciences	-	1	-	1	-	-	1	4	15	40	-	-	1	2	17	48	65
Applied Psychology	-	1	-	1	-	-	1	4	9	27	-	-	1	2	11	35	46
Communication Studies	-	-	-	-	-	-	-	-	2	11	-	-	-	-	2	11	13
Environmental Sciences	-	-	-	-	-	-	-	-	4	2	-	-	-	-	4	2	6
Engineering	-	-	10	2	2	-	5	-	134	8	1	-	14	-	166	10	176
Civil Engineering	-	-	-	1	-	-	1	-	14	2	-	-	2	-	17	3	20
Geomatics	-	-	1	-	-	-	-	-	5	1	-	-	-	-	6	1	7
Manufacturing Engr Tech	-	-	3	-	1	-	-	-	14	1	1	-	2	-	21	1	22
Mechanical Engr Tech	-	-	2	1	1	-	2	-	20	1	-	-	5	-	30	2	32
Computer Engr Tech	-	-	1	-	-	-	-	-	25	1	-	-	1	-	27	1	28
Software Engr Tech	-	-	3	-	-	-	1	-	38	2	-	-	3	-	45	2	47
Electronics Engr Tech	-	-	-	-	-	-	1	-	17	-	-	-	1	-	19	-	19
Laser Optical Engr Tech	-	-	-	-	-	-	-	-	1	-	-	-	-	-	1	-	1
Health	-	1	2	9	-	-	3	4	23	104	1	-	7	7	36	125	161
Clinical Lab Science	-	-	-	5	-	-	-	1	5	9	-	-	1	1	6	16	22
Dental Hygiene	-	-	-	-	-	-	-	1	-	25	-	-	-	1	-	27	27
Dental Hygiene Outrch	-	-	-	-	-	-	-	-	-	5	-	-	-	-	-	5	5
Echocardiography	-	-	-	-	-	-	-	-	-	1	-	-	-	-	-	1	1
Health Sciences	-	-	1	-	-	-	-	-	1	5	-	-	-	-	2	5	7
Radiologic Science	-	1	-	-	-	-	2	1	5	21	1	-	2	1	10	24	34
RDSC Outreach	-	-	-	-	-	-	-	-	1	-	-	-	-	-	1	-	1
RDSC: Nuclear Med	-	-	-	1	-	-	1	-	5	8	-	-	-	-	6	9	15
Respiratory Care Outrch	-	-	-	-	-	-	-	-	1	1	-	-	-	-	1	1	2
Ultrasound: Sonography	-	-	-	1	-	-	-	-	-	13	-	-	1	1	1	15	16
Ultrasound: Vascular	-	-	1	2	-	-	-	1	3	11	-	-	3	2	7	16	23
Ultrasound: Vasc Outrch	-	-	-	-	-	-	-	-	2	5	-	-	-	1	2	6	8
Management	2	-	2	-	-	2	-	1	30	17	3	-	2	-	39	20	59
Information Tech	-	-	-	-	-	1	-	-	6	1	-	-	1	-	7	2	9
Mgmt Info Systems	1	-	1	-	-	1	-	-	7	-	1	-	-	-	10	1	11
MIS: Mgmt Actg	-	-	-	-	-	-	-	-	-	2	-	-	-	-	-	2	2
Mgmt: Accounting	-	-	-	-	-	-	-	-	-	5	-	-	-	-	-	5	5
Mgmt: Marketing	1	-	-	-	-	-	-	1	6	3	1	-	-	-	8	4	12
Mgmt: Small Business	-	-	1	-	-	-	-	-	7	4	1	-	-	-	9	4	13
Operations Mgmt	-	-	-	-	-	-	-	-	4	2	-	-	1	-	5	2	7
Total Assoc Degrees	-	-	3	3	-	1	1	2	37	30	-	-	1	2	42	38	80
Associate of Arts	-	-	-	-	-	-	1	-	2	11	-	-	-	-	3	11	14
A.A.S.	-	-	1	3	-	1	-	2	19	15	-	-	1	1	21	22	43
Health																	
Paramedic Educ	-	-	1	1	-	-	-	-	14	5	-	-	-	1	15	7	22
Respiratory Care	-	-	-	1	-	-	-	2	5	10	-	-	1	-	6	13	19
Management																	
Office Systems Tech	-	-	-	1	-	1	-	-	-	-	-	-	-	-	-	2	2
A.E.	-	-	2	-	-	-	-	-	16	4	-	-	-	1	18	5	23
Computer Engr Tech	-	-	1	-	-	-	-	-	6	2	-	-	-	1	7	3	10
Electronics Engr Tech	-	-	-	-	-	-	-	-	1	1	-	-	-	-	1	1	2
Software Engr Tech	-	-	1	-	-	-	-	-	9	1	-	-	-	-	10	1	11
TOTAL	2	2	17	15	2	3	10	11	239	199	5	-	25	11	300	241	541

SOURCE: Graduate Analysis by Degree and Major (ZJRRDEG)

Table 2.2.15
FRESHMAN ENROLLMENT FROM MAJOR FEEDER AREAS
Fall 2004 and Fall 2005 (4th Week)

	Fall 2004			Fall 2005		
	Number	% of OR	% of Total	Number	% of OR	% of Total
Total All OIT Freshmen	614	--	100.0	566	--	100.0
Total Oregon OIT freshmen	554	100.0	90.2	506	100.0	89.4
Klamath County	185	33.4	30.1	154	30.4	27.2
Jackson County	54	9.7	8.8	55	10.9	9.7
Subtotal	239	43.1	38.9	209	41.3	36.9
Clackamas County	22	4.0	3.6	23	4.5	4.1
Multnomah County	43	7.8	7.0	43	8.5	7.6
Washington County	34	6.1	5.5	27	5.3	4.8
Subtotal	99	17.9	16.1	93	18.4	16.4
Lane County	30	5.4	4.9	22	4.3	3.9
Marion County	24	4.3	3.9	24	4.7	4.2
Douglas County	13	2.3	2.1	11	2.2	1.9
Subtotal	67	12.1	10.9	57	11.3	10.1

SOURCE: Fall 2004 - SCARF Enrollment Analysis by Geographic Origin; Fall 2005 - Student Extract

Table 2.3.1
OWLS COMPETE IN NAIA

The National Association of Intercollegiate Athletics (NAIA) currently administers intercollegiate programs for 310 colleges and universities of moderate enrollment. The purpose of the NAIA is to promote the education and development of students through intercollegiate athletic participation. Member institutions, although varied and diverse, share a common commitment to high standards and the principle that athletics serve as an integral part of education.

Established in 1940 as the National Association of Intercollegiate Basketball, the NAIB evolved from a "National Small College Basketball Tournament" in 1937. The NAIB was renamed the NAIA in 1952 and is currently headquartered in Olathe, Kansas.

NAIA schools are split into Division I and Division II based on the amount of financial aid available from the member institutions to their student athletes. Division II, of which Oregon Institute of Technology is a member, offers the equivalent of six full scholarships, while Division I schools offer 11 scholarships.

The NAIA divides the United States and British Columbia into 26 conference entities of various proportions for qualifying into their national tournaments. They currently organize and conduct 23 national championships, 12 for men and 11 for women in 13 different sports.

OIT is a member of the Cascade Collegiate Conference with Eastern and Southern Oregon Universities; Cascade College, Concordia University, Corban College, and Warner Pacific College in Oregon. Other conference members include Albertson College (Idaho) and Evergreen State and Northwest University (Washington).

OIT competes in cross-country, track and field and basketball (men and women), baseball (men), softball, soccer and volleyball (women).

SOURCE: OIT Athletics, Recreation and Fitness Center (updated 7/25/2006)

**Table 2.3.2
INTERCOLLEGIATE ATHLETICS
2006-07**

Director of Athletics: **Michael Schell**

MEN'S SPORTS

**Baseball
Basketball
Cross Country
Track & Field**

COACH

Pete Whisler
Dan Miles
Ken Coffman
Ken Coffman

WOMEN'S SPORTS

**Basketball
Cross Country
Soccer
Softball
Track & Field
Volleyball**

COACH

Tom Loney
Ken Coffman
Bryan Mueller
Greg Stewart
Ken Coffman
Amanda Rico

SOURCE: OIT Athletics, Recreation and Fitness Center

Table 2.3.3
ATHLETIC ACHIEVEMENTS
2005-06

Oregon Institute of Technology had 19 All-American Scholar Athletes and numerous on the field honorees for the 2005-2006 school year.

The men's basketball team went 28-10, won the conference title, and came within an eyelash of a repeat effort at the national tournament. Tech lost in a semifinal game to Walsh (Ohio) 77-70. The score was tied at 38-all with 19:25 remaining in the game when OIT 1st team All-American Levell Hesia suffered a concussion and was unable to play the rest of the game. Hesia and Andre' Lawrence were named to the All-Tournament team.

The women's basketball team won 22 games under the leadership of Tom Loney, and won its first ever conference basketball crown. Tech finished with a best ever record of 22-9. For the second straight, year, Nikki McElligott was conference Player of the Year and an All-American selection. Two of McElligott's teammates Samantha Gilbert and Tiffany Gugel were selected as All-American Scholar Athletes.

The soccer team under 3rd year head coach Kevin Sims had its first winning season (10-6-1) since the sport began six years ago. Three ladies received second team all-conference honors while Dena Young was selected as an All-American Scholar Athlete. Coach Sims returned to North Carolina in June to be an Athletics Director and soccer coach at the high school level.

The volleyball team under 3rd year head coach Amanda Rico had another outstanding campaign. The Owls were 16-14 overall and finished second in the conference tournament to gain their first ever trip to the Region I tournament. Megan Albertson was an All-Cascade Conference selection while Jamie Ferry was an All-American Scholar Athlete.

For the second straight year Ken Coffman's cross country squad sent Amy Bricco and Andrea Nations to the national meet in Louisville, Kentucky. Bricco, Nations, Mallory Swan, Lucy Boyle and Jimmy Addison were named All-American Scholar Athletes.

Once again, the softball team (33-17-1) made the playoffs under first year mentor Greg Stewart. Tech finished third in Regional play. Lisa Erwert, Amanda Doherty and Laura Delplanche were selected to both the Region One and Cascade Conference teams. Erwert and Grace Fagan were named All-American Scholar Athletes.

For the second straight time since baseball returned to OIT four years ago, Pete Whisler's club made the Region I playoffs. Tech finished the season at 23-25 overall and one-and-two in Region I play; both were best since baseball returned in 2002. Ryan Wilson, Derrick Draper and John Jefferson were All-Region I selections and were joined by Cory Merritt and Brian Parnell on the all-conference team. Trevor Mauch, Charlie Jensen, Draper and Wilson were named All-American Scholar Athletes.

Completing his 9th year as track guru, Ken Coffman's women won their third straight conference championship almost laping the field. The women and men won the combined team totals as well. Michelle Klaja was the Cascade Conference Female Athlete of the Year and was awarded All-American honors in the javelin at nationals. Academic All-Americans included Samantha Gilbert, Amy Bricco and Kyle Hill.

SOURCE: OIT Athletics, Recreation and Fitness Center

**Table 2.3.4
OIT STUDENT CLUBS & ORGANIZATIONS**

Associated Students of OIT (ASOIT)

Campus Arts & Entertainment (CA&E)

Departmental & Professional

Associated Students of Civil Engineering (ASCE)
 American Society of Mechanical Engineers (ASME)
 Diagnostic Medical Sonography (DMS)
 Dental Hygiene (SADHA)
 Health Sciences
 Institute of Electrical and Electronic Engineering (IEEE)
 Nuclear Medicine
 Oregon Tech Student Marketing Association (OTSMA)
 Professional Land Surveyors of Oregon (PLSO)
 Psychology
 Radiologic Science Club (SMIS/RDSC)
 Society of Automotive Engineers (SAE)
 Society of Manufacturing Engineers (SME)
 Society of Women Engineers (SWE)
 Student Nurses Association (SNA)
 Students in Communication (SIC)
 Vascular

Greeks

Phi Delta Theta Fraternity

Honoraries

Lambda Pi Eta
 Phi Beta Lambda
 Phi Theta Kappa
 PSI Chi
 Tau Alpha Pi

International and Cultural

Coalicion Hablantes Espanol (MEChA)
 Diversity Center
 International Club
 Multi-Cultural Student Union
 Native American Student Union (NASU)

Political

College Republicans

Publications and Media

KTEC (campus radio station)
 OTB (Oregon Technical Broadcasting)
 Oregon Tech Bytes
The Edge (campus newspaper)

Recreational

Ball Room Dance Club
 Computer Science Society (CSS)
 Dance Club
 Gay/Straight Alliance (GSA)
 La Crosse
 Mars Reach
 OTAKU / Anime

Outdoor Program (OP)

Pep Band
 Rock Climbing Club (RCC)
 Rugby (Hitten Hooters)
 Soccer
 Students for Human Dignity
 Theater Club
 Tolarian Refugees
 Trekkies
 Waterpolo

Religious

Campus Crusade for Christ
 Christian Fellowship
 LDSSA

Residence Hall Association (RHA)

SOURCE: Associated Students of OIT (ASOIT); as of 6/23/2006

**Table 2.3.5
STUDENT AWARDS
2005-06**

President's Senior Cup: Presented by the faculty to two baccalaureate students, one from each school. Selection is primarily based on demonstrated academic excellence. Recipients of the President's Senior Cup are selected from members of the President's Senior Club.

Alicia Navetta
Health Sciences

Sheri Culbertson
Computer & Software Engineering Technology

Outstanding Scholar: Consists of students appointed by their department chair or program director who have demonstrated academic excellence in their major.

Erin McFarland (Applied Psychology), **Ben Schuch** (Civil Engineering), **Nicholas Oberst** (Clinical Laboratory Science), **Rebecca Prock** (Communication Studies), **Sheri Culbertson** (Computer Engineering Technology), **Brooke DePaul** (Dental Hygiene), **Holly Howell** (Diagnostic Medical Sonography), **Connie Ellison** (Echocardiography), **Matthew Weidman** (Electronics Engineering Technology), **Daniel Austin** (Electronics Engineering Technology-Portland), **Kristen Hiatt** (Environmental Sciences), **Jeff Hsu** (Geomatics), **Alicia Navetta** (Health Sciences), **Jeremy Ricker** (Information Technology), **Carol Urbach** (Mgmt: Accounting/MIS: Accounting), **Danielle Ralston** (Mgmt: Entrepreneurship/Small Business Mgmt), **Samantha Gilbert** (Mgmt: Marketing), **Jeffrey Dickson** (Management Information Systems), **Alexis Poirier** (Management-Portland), **Wayne Fletcher** (Manufacturing Engineering Technology), **Dan Lundy** (Manufacturing Engineering Technology-Portland), **Elizabeth Duffy** (Mechanical Engineering Technology), **Amanda L. Anderson** (Nuclear Medicine Technology), **Natalie Coon** (Nursing), **Wayne Fletcher** (Operations Management), **Ebony Gingerich** (Radiologic Science), **Christopher Thomas** (Software Engineering Technology), **Joseph Kilada** (Software Engineering Technology-Portland), **Camile Litherland** (Vascular Technology)

Kristen Hiatt
Environmental Sciences

Hunt Science Award: Presented by the faculty to the student who has completed a project that is judged to have made an original scientific contribution or has refined existing scientific techniques.

Owens Citizenship Award: Presented by the faculty to the student who has made outstanding contributions to the University.

Minh Tran
Management Information Systems

Most Dedicated Student or Students Award: Presented by the faculty to the student whose loyalty to the University, involvement in campus and community activities and commitment to high personal standards form a role model for others.

Karin Rood
Applied Psychology

Student Achievement Award: Presented by the faculty, recognizes an outstanding student project that is judged to have made a significant contribution to the student's area of academic interest.

Joseph Kilada
Software Engineering Technology

Outstanding Community Service Award: Presented by the faculty, recognizes outstanding contributions to OIT and/or the community. This is exemplified by high moral standards, a cooperative attitude with community leaders, and demonstrated service to others.

Terry Steiner
Communication Studies

The Pride of OIT Award: Awarded upon recommendation of the Student Awards Commission to the student or students whose academic excellence, scholarship, service or other creative endeavors bring outstanding recognition and pride to OIT.

Hybrid Control Systems Team
Software Engineering Technology Juniors:
Khoa Nguyen, Skyleer Arabak, Kyle Spencer,
and Joshua Kimball
Advisor: James Long

SOURCE: OIT Office of Student Affairs