

## FACT BOOK 2006-2007

### SECTION 2: STUDENTS

#### ***Enrollment (2.1)***

Table 2.1.1	Part 1: Enrollment Profile by Location, Fall 2006 Part 2: Headcount and FTE Enrollment by Location and Program/Type of Course, 2004 to 2006
Table 2.1.2	Headcount Distribution by Gender, Fall Terms 2002 to 2006
Table 2.1.3	Enrollment by Residency Status & Fee Policy, 2002 to 2006
Table 2.1.4	Headcount Distribution by Student Level, Fall Terms 2002 to 2006
Table 2.1.5	Full-time/Part-time Headcount, Fall Terms 2002 to 2006
Table 2.1.6	Headcount Distribution by Ethnicity, Fall Terms 2002 to 2006
Table 2.1.7	Enrollment by Major, Ethnicity and Gender, Fall 2006
Table 2.1.7.1	Enrollment by Major and Location, Fall 2006
Table 2.1.8	Enrollment by Major, Fall Terms 2002 to 2006
Table 2.1.9	FTE Enrollment by Student Level, 2006-07
Graph 2.1.9a	Enrollment History, Fall Terms 2002-03 to 2006-07 (bar graph)
Graph 2.1.9b	Enrollment History, Winter Terms 2002-03 to 2006-07 (bar graph)
Graph 2.1.9c	Enrollment History, Spring Terms 2002-03 to 2006-07 (bar graph)
Table 2.1.10	Headcount and FTE by Campus/Location, Fall Terms 1997 to 2006
Table 2.1.11	Credit Hours and Annual FTE by Course Department, 2002-03 to 2006-07
Table 2.1.12	Unduplicated Headcount in Credit Courses, 2001-02 to 2005-06
Table 2.1.13	Distance Education Enrollment Summary, 2006-07

#### ***Student Profile (2.2)***

Table 2.2.1	Average Age by Student Level and Gender, Fall 2006
Table 2.2.2	Headcount Distribution by Age, Fall Terms 2002 to 2006
Table 2.2.3	Enrollment by Geographic Origin, Fall Terms 2002 to 2006
Table 2.2.4	Students from Oregon by County, Fall 2006
Table 2.2.5	Enrollment by Previous Attendance, 2002 to 2006
Table 2.2.6	Average High School GPA of First-time Freshmen by Gender and Residency, 2002 to 2006
Table 2.2.7	Enrollment of First-time Freshmen by High School GPA and Gender, Fall 2006
Table 2.2.8	Enrollment of First-time Freshmen by High School GPA and Residency, Fall 2006
Table 2.2.9	First-time Freshmen SAT Test Score Statistics, Fall 2006

## FACT BOOK 2006-2007

### SECTION 2: STUDENTS (continued)

Table 2.2.10	Admissions Summary, Fall 2006
Table 2.2.11	Grade Distribution by Department, Fall 2006
Table 2.2.12	Overall Grade Distribution, 2002 to 2006
Table 2.2.13	Part 1: Degrees Awarded by Major, 2002-03 to 2006-07 Part 2: Minors Awarded Since Inception, 1998-99 through 2006-07
Table 2.2.14	Degrees Awarded by Ethnicity and Gender, 2006-07
Table 2.2.15	Freshman Enrollment from Major Feeder Areas, Fall 2005 and Fall 2006

#### ***Student Activities and Achievements (2.3)***

Table 2.3.1	Owls Compete in NAIA
Table 2.3.2	Intercollegiate Athletics 2007-08
Table 2.3.3	Athletic Achievements 2006-07
Table 2.3.4	OIT Student Clubs and Organizations
Table 2.3.5	Student Awards, 2006-07

**Table 2.1.1 (Part 1)**  
**Enrollment Profile by Location\***  
**Fall 2006 -- 4th Week**

Category	Fall 2006				Fall 2005	Fall 2006 Compared to Fall 2005	
	Klamath**	Portland Operations***	Other****	Total		#	%
<b>Total Headcount Enrollment</b>	<b>2,090</b>	<b>363</b>	<b>704</b>	<b>3,157</b>	<b>3,351</b>	<b>-194</b>	<b>-5.8%</b>
<b>Gender</b>							
Male	1,083	279	260	<b>1,622</b>	1,769	<b>-147</b>	<b>-8.3%</b>
Female	1,007	84	444	<b>1,535</b>	1,582	<b>-47</b>	<b>-3.0%</b>
<b>Ethnicity</b>							
Amer. Indian/Alaska Native	41	5	14	<b>60</b>	63	<b>-3</b>	<b>-4.8%</b>
Asian/Pacific Islander	93	38	40	<b>171</b>	174	<b>-3</b>	<b>-1.7%</b>
Black/African American	18	8	10	<b>36</b>	36	<b>0</b>	<b>0.0%</b>
Hispanic	83	16	29	<b>128</b>	135	<b>-7</b>	<b>-5.2%</b>
White, Non-Hispanic	1,692	250	539	<b>2,481</b>	2,639	<b>-158</b>	<b>-6.0%</b>
International Student	14	8	5	<b>27</b>	30	<b>-3</b>	<b>-10.0%</b>
Unknown	149	38	67	<b>254</b>	274	<b>-20</b>	<b>-7.3%</b>
<b>Student Level</b>							
Freshman	455	52	34	<b>541</b>	566	<b>-25</b>	<b>-4.4%</b>
Sophomore	330	24	14	<b>368</b>	480	<b>-112</b>	<b>-23.3%</b>
Junior	434	48	32	<b>514</b>	490	<b>24</b>	<b>4.9%</b>
Senior	626	131	202	<b>959</b>	914	<b>45</b>	<b>4.9%</b>
Post-baccalaureate	64	62	29	<b>155</b>	129	<b>26</b>	<b>20.2%</b>
Non-admitted UG	179	46	383	<b>608</b>	755	<b>-147</b>	<b>-19.5%</b>
Graduate Master's	2	-	10	<b>12</b>	17	<b>-5</b>	<b>-29.4%</b>
<b>Residency</b>							
Resident	1,833	302	450	<b>2,585</b>	2,842	<b>-257</b>	<b>-9.0%</b>
Non-resident	257	61	254	<b>572</b>	509	<b>63</b>	<b>12.4%</b>
<b>Geographic Source</b>							
Klamath/Lake Counties	726	6	200	<b>932</b>	1,105	<b>-173</b>	<b>-15.7%</b>
Other Oregon Counties	1,066	304	259	<b>1,629</b>	1,727	<b>-98</b>	<b>-5.7%</b>
Other States	289	52	243	<b>584</b>	505	<b>79</b>	<b>15.6%</b>
Foreign Countries	9	1	2	<b>12</b>	14	<b>-2</b>	<b>-14.3%</b>
<b>Full-/Part-Time</b>							
Full-time	1,587	118	109	<b>1,814</b>	1,887	<b>-73</b>	<b>-3.9%</b>
Part-time	503	245	595	<b>1,343</b>	1,464	<b>-121</b>	<b>-8.3%</b>
<b>Age</b>							
Mean	25.3	31.9	27.4	<b>26.6</b>	26.4	<b>0.2</b>	
Median	22.1	29.6	21.6	<b>22.7</b>	22.6	<b>0.1</b>	
Mode	20	27	17	<b>18</b>	20	<b>-2</b>	
<b>Total FTE Enrollment*</b>	<b>1,780.5</b>	<b>206.3</b>	<b>225.5</b>	<b>2,212.3</b>	<b>2,315.5</b>	<b>-103.2</b>	<b>-4.5%</b>

\* Based primarily on course location. Headcount - There are a few exceptions when a student's major is used to determine location (Renewable Energy Systems, Respiratory Care, and degree completion programs). A student is counted only once even if enrolled at more than one location, and is reported under Klamath if enrolled in at least one Klamath class. FTE - FTE is reported where each course is located.

\*\* In addition to traditional on-campus courses, Klamath Campus includes High School Transition program, remedial, KCC, externship, field experience, and continuing education classes.

\*\*\* Portland Operations includes Portland East/West campuses and OHSU Joint Programs.

\*\*\*\* Other includes Boeing, high school Advanced College Placement (statewide), Respiratory Care at Rogue CC, and Klamath degree completion programs.

SOURCE: Student Extract and SCARF IR Table

**Table 2.1.1 (Part 2)**  
**Headcount\* and FTE Enrollment by Location and Program/Type of Course**  
**2004 to 2006 (Fall Terms)**

Location/Program	Fall	Fall	Fall	2006 Compared to 2005	
	2004	2005	2006	Number	Percent
<b>Total Headcount Enrollment**</b>	<b>3,373</b>	<b>3,351</b>	<b>3,157</b>	<b>-194</b>	<b>-5.8%</b>
<b>Klamath</b>	<b>2,455</b>	<b>2,251</b>	<b>2,090</b>	<b>-161</b>	<b>-7.2%</b>
Regular/Traditional Classes	2,188	1,962	1,854	-108	-5.5%
High School Transition	42	30	25	-5	-16.7%
Remedial Courses	0	0	0	0	--
KCC	76	74	53	-21	-28.4%
Other Continuing Education	108	132	122	-10	-7.6%
OHSU Nursing	41	53	36	-17	-32.1%
<b>Portland Operations</b>	<b>317</b>	<b>392</b>	<b>363</b>	<b>-29</b>	<b>-7.4%</b>
Portland East/West	247	286	240	-46	-16.1%
OHSU Joint Programs	70	96	71	-25	-26.0%
Renewable Energy Systems	0	10	52	42	420.0%
<b>Other</b>	<b>601</b>	<b>708</b>	<b>704</b>	<b>-4</b>	<b>-0.6%</b>
Boeing	91	103	90	-13	-12.6%
Degree Completion/Online	75	125	177	52	41.6%
Dental Hygiene at LaGrande	0	27	52	25	92.6%
High School ACP (KF & Other)	411	406	341	-65	-16.0%
Respiratory Care at Rogue CC	24	47	44	-3	-6.4%
<b>Total FTE Enrollment***</b>	<b>2,409.5</b>	<b>2,315.5</b>	<b>2,212.3</b>	<b>-103.2</b>	<b>-4.5%</b>
<b>Klamath</b>	<b>2,037.4</b>	<b>1,876.9</b>	<b>1,780.5</b>	<b>-96.4</b>	<b>-5.1%</b>
Regular/Traditional Classes	1,890.6	1,702.9	1,615.3	-87.6	-5.1%
High School Transition	13.5	8.5	8.7	0.2	2.4%
Remedial Courses	13.9	13.1	8.8	-4.3	-32.8%
KCC	21.5	18.9	14.4	-4.5	-23.8%
Other Continuing Educ.	97.9	133.5	133.3	-0.2	-0.1%
OHSU Nursing	0.0	0.0	0.0	0.0	--
<b>Portland Operations</b>	<b>175.6</b>	<b>211.3</b>	<b>206.3</b>	<b>-5.0</b>	<b>-2.4%</b>
Portland East/West	98.9	116.5	102.7	-13.8	-11.8%
OHSU Joint Programs	76.7	90.8	82.9	-7.9	-8.7%
Renewable Energy Systems	0.0	4.0	20.7	16.7	417.5%
<b>Other</b>	<b>196.5</b>	<b>227.3</b>	<b>225.5</b>	<b>-1.8</b>	<b>-0.8%</b>
Boeing	42.9	42.1	38.0	-4.1	-9.7%
Degree Completion	21.1	0.0	0.0	0.0	--
Dental Hygiene at LaGrande	0.0	26.0	54.1	28.1	108.1%
High School ACP (KF & Other)	104.2	105.7	83.1	-22.6	-21.4%
Respiratory Care at Rogue CC	28.3	53.5	50.3	-3.2	-6.0%

\* Under Headcount Enrollment, a student is counted only once even if enrolled in two different types of courses.

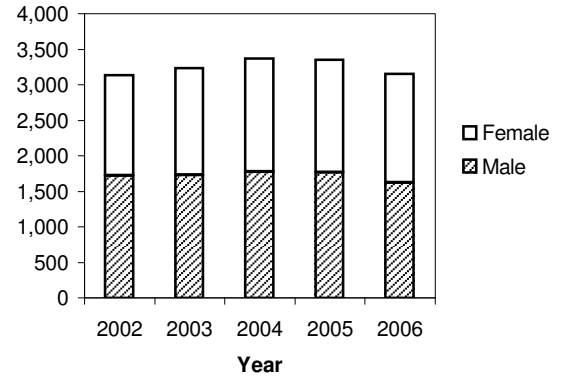
\*\* Headcount - Location and program are primarily based on course information. Beginning Fall 2006, the exceptions are Renewable Energy Systems, Respiratory Care-Rogue CC, and Degree Completion which are based on students' majors. Fall 2005 figures have been revised to reflect this new methodology. [Note: Fall 2004 data have not been revised; differences, if any, are minimal.]

\*\*\* FTE - FTE is assigned to the location/program of the course rather than the student. Fall 2005 figures have been adjusted to reflect the following change in methodology: Degree Completion is no longer listed as a separate category when reporting FTE by location. It is now included under KF/Other Continuing Educ. or Respiratory Care depending on the course prefix. [Note: Fall 2004 FTE figures have not been revised.]

SOURCE: Student Extract and SCARF tables (4th Week)

**Table 2.1.2**  
**HEADCOUNT DISTRIBUTION BY GENDER**  
**Fall Terms 2002 to 2006**

<b>Gender</b>	<b>2002</b>	<b>2003</b>	<b>2004</b>	<b>2005</b>	<b>2006</b>
Male	1,719	1,733	1,779	1,769	1,622
Female	1,420	1,503	1,594	1,582	1,535
<b>TOTAL</b>	<b>3,139</b>	<b>3,236</b>	<b>3,373</b>	<b>3,351</b>	<b>3,157</b>



SOURCE: Student Extract, Fall Terms -- 4th Week

**Table 2.1.3  
ENROLLMENT BY RESIDENCY STATUS & FEE POLICY\*  
2002 to 2006 (Fall Terms, 4th Week)**

Based on Residency Status*	Resident		Non-Resident		Total	
	Number	Percent	Number	Percent	Number	Percent
<b>Fall 2002</b>						
Undergraduate	2,729	87.02%	407	12.98%	3,136	100.00%
Graduate	3	100.00%	0	0.00%	3	100.00%
<b>Total</b>	<b>2,732</b>	<b>87.03%</b>	<b>407</b>	<b>12.97%</b>	<b>3,139</b>	<b>100.00%</b>
<b>Fall 2003</b>						
Undergraduate	2,852	88.16%	383	11.84%	3,235	100.00%
Graduate	0	0.00%	1	100.00%	1	100.00%
<b>Total</b>	<b>2,852</b>	<b>88.13%</b>	<b>384</b>	<b>11.87%</b>	<b>3,236</b>	<b>100.00%</b>
<b>Fall 2004</b>						
Undergraduate	2,900	86.16%	466	13.84%	3,366	100.00%
Graduate	6	85.71%	1	14.29%	7	100.00%
<b>Total</b>	<b>2,906</b>	<b>86.15%</b>	<b>467</b>	<b>13.85%</b>	<b>3,373</b>	<b>100.00%</b>
<b>Fall 2005</b>						
Undergraduate	2,834	85.00%	500	15.00%	3,334	100.00%
Graduate	8	47.06%	9	52.94%	17	100.00%
<b>Total</b>	<b>2,842</b>	<b>84.81%</b>	<b>509</b>	<b>15.19%</b>	<b>3,351</b>	<b>100.00%</b>
<b>Fall 2006</b>						
Undergraduate	2,583	82.13%	562	17.87%	3,145	100.00%
Graduate	2	16.67%	10	83.33%	12	100.00%
<b>Total</b>	<b>2,585</b>	<b>81.88%</b>	<b>572</b>	<b>18.12%</b>	<b>3,157</b>	<b>100.00%</b>

Based on Fee Policy*	Resident & Other Fee Policies**		Non-Resident		Total	
	Number	Percent	Number	Percent	Number	Percent
<b>Fall 2002</b>						
Undergraduate	2,989	95.31%	147	4.69%	3,136	100.00%
Graduate	3	100.00%	0	0.00%	3	100.00%
<b>Total</b>	<b>2,992</b>	<b>95.32%</b>	<b>147</b>	<b>4.68%</b>	<b>3,139</b>	<b>100.00%</b>
<b>Fall 2003</b>						
Undergraduate	3,088	95.46%	147	4.54%	3,235	100.00%
Graduate	1	100.00%	0	0.00%	1	100.00%
<b>Total</b>	<b>3,089</b>	<b>95.46%</b>	<b>147</b>	<b>4.54%</b>	<b>3,236</b>	<b>100.00%</b>
<b>Fall 2004</b>						
Undergraduate	3,211	95.40%	155	4.60%	3,366	100.00%
Graduate	7	100.00%	0	0.00%	7	100.00%
<b>Total</b>	<b>3,218</b>	<b>95.40%</b>	<b>155</b>	<b>4.60%</b>	<b>3,373</b>	<b>100.00%</b>
<b>Fall 2005</b>						
Undergraduate	3,189	95.65%	145	4.35%	3,334	100.00%
Graduate	17	100.00%	0	0.00%	17	100.00%
<b>Total</b>	<b>3,206</b>	<b>95.67%</b>	<b>145</b>	<b>4.33%</b>	<b>3,351</b>	<b>100.00%</b>
<b>Fall 2006</b>						
Undergraduate	2,980	94.75%	165	5.25%	3,145	100.00%
Graduate	12	100.00%	0	0.00%	12	100.00%
<b>Total</b>	<b>2,992</b>	<b>94.77%</b>	<b>165</b>	<b>5.23%</b>	<b>3,157</b>	<b>100.00%</b>

\* Residency Status identifies whether or not a student has established Oregon residency. Fee Policy is the type of tuition a student is assessed. A non-resident may not always pay non-resident tuition.

\*\* Includes non-resident students enrolled for less than 9 state support credits (Part-time Fee Policy) and those assessed resident tuition. Students reported in this category may not always be Oregon residents.

SOURCES: Data based on residency status - Student Extract

Data based on fee policy - OUS Institutional Research Services (Enrollment Report ERTE-01 Part 1)

**Table 2.1.4**  
**HEADCOUNT DISTRIBUTION BY STUDENT LEVEL**  
**Fall Terms 2002 to 2006**

<i><b>Student Level</b></i>	<i><b>2002</b></i>	<i><b>2003</b></i>	<i><b>2004</b></i>	<i><b>2005</b></i>	<i><b>2006</b></i>
Freshman	662	751	614	566	541
Sophomore	540	468	511	480	368
Junior	531	517	546	490	514
Senior	801	807	878	914	959
Post-Bac/Non-Graduate	60	99	114	129	155
Non-Admit Undergraduate	542	593	703	755	608
Master's	3	1	7	17	12
<b>TOTAL</b>	<b>3,139</b>	<b>3,236</b>	<b>3,373</b>	<b>3,351</b>	<b>3,157</b>

\* The timing of transfer credit evaluation can impact undergraduate student level counts. Admitted students whose transfer credits have not been evaluated and accepted by OIT are considered freshman. If transfer evaluations are completed prior to 4th week, higher counts in the sophomore, junior, and senior levels and lower freshman headcount will result.

SOURCE: Student Extract (4th Week)

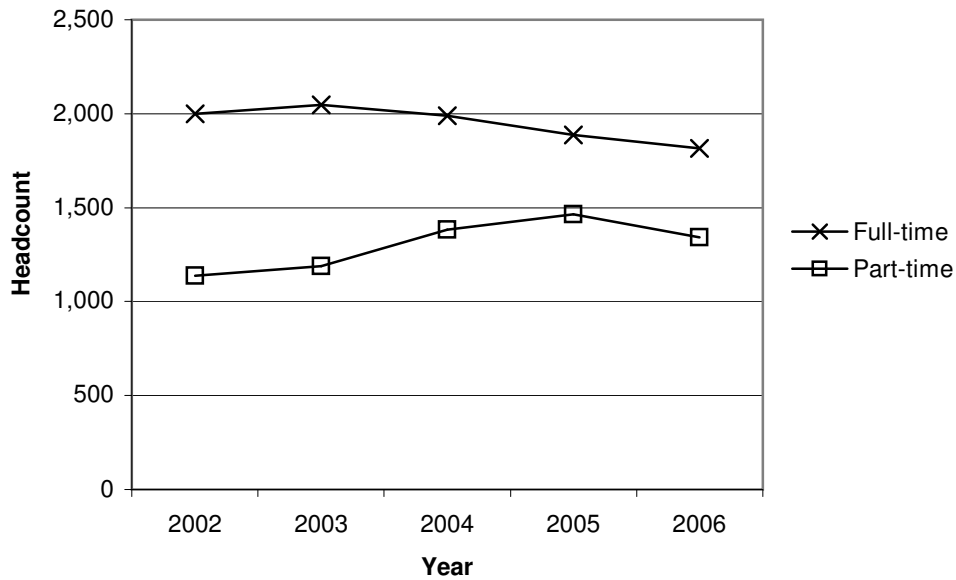
**Table 2.1.5  
FULL-TIME/PART-TIME HEADCOUNT  
Fall Terms 2002 to 2006**

	<i>2002</i>	<i>2003</i>	<i>2004</i>	<i>2005</i>	<i>2006</i>
<b>Full-time*</b>	<b>2,001</b>	<b>2,047</b>	<b>1,990</b>	<b>1,887</b>	<b>1,814</b>
Men	1,145	1,141	1,107	1,023	972
Women	856	906	883	864	842
<b>Part-time**</b>	<b>1,138</b>	<b>1,189</b>	<b>1,383</b>	<b>1,464</b>	<b>1,343</b>
Men	574	592	672	746	650
Women	564	597	711	718	693
<b>TOTAL</b>	<b>3,139</b>	<b>3,236</b>	<b>3,373</b>	<b>3,351</b>	<b>3,157</b>

\* Undergraduates 12 or more hours; graduates 9 or more hours.

\*\* Undergraduates 0-11 hours; graduates 0-8 hours.

SOURCE: Student Extract (4th Week)





**Table 2.1.6**  
**HEADCOUNT DISTRIBUTION BY ETHNICITY**  
**Fall Terms 2002 to 2006**

<i><b>Ethnicity</b></i>	<i><b>2002</b></i>	<i><b>2003</b></i>	<i><b>2004</b></i>	<i><b>2005</b></i>	<i><b>2006</b></i>
American Indian/Alaskan Native	52	54	57	63	60
Asian/Pacific Islander	174	152	164	174	171
Black/African American	42	32	35	36	36
Hispanic	125	146	134	135	128
White, Non-Hispanic	2,485	2,598	2,710	2,639	2,481
International Student	21	26	22	30	27
Unknown	240	228	251	274	254
<b>TOTAL</b>	<b>3,139</b>	<b>3,236</b>	<b>3,373</b>	<b>3,351</b>	<b>3,157</b>

SOURCE: Student Extract (4th Week)

Table 2.1.7 - ENROLLMENT BY MAJOR, ETHNICITY, AND GENDER -- FALL 2006

Major	American Indian/ Alaska Native		Asian/Pacific Islander		Black/African American		Hispanic		White Non-Hispanic		International Student		Unknown		TOTALS		
	M	F	M	F	M	F	M	F	M	F	M	F	M	F	M	F	ALL
<b>Engineering:</b>	12	-	55	7	7	1	27	8	647	53	13	-	71	9	832	78	910
Civil Engineering	3	-	3	-	1	-	1	1	79	14	-	-	6	1	93	16	109
Geomatics	-	-	2	-	-	-	-	-	28	6	-	-	8	2	38	8	46
Manufacturing Engr Tech	-	-	16	6	2	-	5	-	74	7	1	-	9	2	107	15	122
Manufacturing Engr Tech (Master's)	-	-	1	-	-	-	-	-	9	1	-	-	1	-	11	1	12
Mechanical Engineering	-	-	1	-	-	-	-	-	14	-	1	-	1	-	17	-	17
Mechanical Engr Tech	3	-	12	-	2	-	10	1	140	6	5	-	8	2	180	9	189
Computer Engr Tech	-	-	4	-	-	-	3	1	77	5	1	-	8	-	93	6	99
Software Engr Tech	5	-	9	1	1	-	1	4	126	4	4	-	20	-	166	9	175
Electronics Engr Tech	-	-	6	-	1	-	6	-	68	3	1	-	3	1	85	4	89
Renewable Energy Systems	1	-	1	-	-	1	1	1	32	7	-	-	7	1	42	10	52
<b>Management:</b>	1	1	14	5	4	4	7	3	138	74	4	1	13	9	181	97	278
IT Appl Development (includes IT)	-	-	7	2	3	1	2	1	44	8	1	-	3	1	60	13	73
IT Appl Development Online	-	-	-	-	1	-	-	1	2	-	-	-	2	-	5	1	6
IT Bus/Systems Analysis (incl MIS)	-	-	4	1	-	1	1	-	30	8	-	1	4	1	39	12	51
IT Accounting (incl MIS:Mgmt Actg)	-	-	-	-	-	-	1	-	5	4	-	-	-	1	6	5	11
Mgmt: Accounting	-	-	-	1	-	-	-	-	7	19	1	-	1	1	9	21	30
Mgmt: Marketing	-	1	-	-	-	1	1	-	7	14	1	-	1	3	10	19	29
Mgmt: Small Business	1	-	1	1	-	1	1	1	21	16	1	-	2	1	27	20	47
Office Systems Tech	-	-	-	-	-	-	-	-	-	2	-	-	-	-	-	2	2
Operations Management	-	-	2	-	-	-	1	-	22	3	-	-	-	1	25	4	29
<b>Health Technologies:</b>	10	14	22	43	4	9	13	30	250	735	1	7	21	62	321	900	1,221
Clinical Lab Science	-	1	2	7	-	1	1	1	5	27	-	-	2	1	10	38	48
Pre-Dental Hygiene	-	-	-	2	-	-	-	3	-	38	-	-	-	4	-	47	47
Dental Hygiene	-	2	-	3	-	1	-	1	2	68	-	-	1	3	3	78	81
Dental Hygiene (Joint EOU)	-	-	-	2	-	1	-	1	1	44	-	-	-	2	1	50	51
Dental Hygiene Outreach	-	-	-	-	-	1	-	-	1	22	-	-	-	5	1	28	29
Echocardiography (Outreach)	-	-	1	2	1	2	-	-	9	42	-	1	-	5	11	52	63
Health Sciences	2	-	5	4	1	-	3	1	26	36	-	-	2	2	39	43	82
Pre-Medical Imaging	4	3	4	7	1	2	5	10	53	113	-	2	7	14	74	151	225
Radiologic Science (RDSC)	3	2	6	6	-	-	1	3	50	66	-	-	-	6	60	83	143
RDSC Outreach	1	-	-	1	-	-	1	1	11	7	1	2	-	-	14	11	25
Nuclear Medicine Technology	-	-	1	-	-	-	-	1	27	21	-	1	2	1	30	24	54
Diagnostic Medical Sonography	-	-	-	1	1	-	-	-	4	58	-	-	1	5	6	64	70
Vascular Technology	-	1	3	5	-	-	-	-	21	47	-	-	-	5	24	58	82
Vascular Technology Outreach	-	-	-	1	-	1	1	1	6	30	-	-	-	1	7	34	41
Pre-Nursing	-	3	-	2	-	-	1	4	7	35	-	-	-	3	8	47	55
Nursing	-	-	-	-	-	-	-	1	7	36	-	-	-	1	7	38	45
Paramedic Education	-	-	-	-	-	-	-	-	7	6	-	-	5	3	12	9	21
Pre-Respiratory Care	-	1	-	-	-	-	-	-	-	1	-	-	-	-	-	2	2
Respiratory Care	-	1	-	-	-	-	-	2	11	28	-	1	-	1	11	33	44
Respiratory Care Outreach	-	-	-	-	-	-	-	-	2	10	-	-	1	-	3	10	13
<b>Arts and Sciences:</b>	7	15	10	15	4	3	19	21	221	363	-	1	27	42	288	460	748
Applied Mathematics	-	-	-	-	-	-	-	-	1	5	-	-	1	-	2	5	7
Applied Psychology	1	3	2	4	2	-	5	7	24	70	-	1	-	6	34	91	125
Associate of Arts	1	-	-	-	-	-	-	-	2	1	-	-	-	-	3	1	4
Communication Studies	1	1	1	-	1	-	-	1	21	21	-	-	-	1	24	24	48
Environmental Sciences	-	-	-	-	-	-	1	1	13	5	-	-	-	-	14	6	20
General Studies	4	11	7	11	1	3	13	12	160	261	-	-	26	35	211	333	544
<b>TOTALS</b>	<b>30</b>	<b>30</b>	<b>101</b>	<b>70</b>	<b>19</b>	<b>17</b>	<b>66</b>	<b>62</b>	<b>1,256</b>	<b>1,225</b>	<b>18</b>	<b>9</b>	<b>132</b>	<b>122</b>	<b>1,622</b>	<b>1,535</b>	<b>3,157</b>

SOURCE: Student Extract

**Table 2.1.7.1  
Enrollment by Major and Location\*  
Fall 2006 -- 4th Week**

Major	Fall 2006				Fall 2005	Fall 2006 Compared to Fall 2005	
	Klamath	Portland Operations**	Other***	Total		#	%
<i>SCHOOL OF ENGINEERING, TECHNOLOGY, AND MANAGEMENT</i>							
<b>Engineering:</b>	<b>606</b>	<b>215</b>	<b>89</b>	<b>910</b>	<b>965</b>	<b>-55</b>	<b>-5.7%</b>
Civil Engineering	109	-	-	109	115	-6	-5.2%
Geomatics	46	-	-	46	50	-4	-8.0%
Manufacturing Engineering Tech.	19	24	79	122	147	-25	-17.0%
Manufacturing Engr. Tech. (Master's)	2	-	10	12	17	-5	-29.4%
Mechanical Engineering	17	-	-	17	-	17	****
Mechanical Engineering Tech.	138	51	-	189	204	-15	-7.4%
Computer Engineering Tech.	98	1	-	99	129	-30	-23.3%
Software Engineering Tech.	122	53	-	175	191	-16	-8.4%
Electronics Engineering Tech.	55	34	-	89	102	-13	-12.7%
Renewable Energy Systems	-	52	-	52	10	42	420.0%
<b>Management:</b>	<b>209</b>	<b>63</b>	<b>6</b>	<b>278</b>	<b>321</b>	<b>-43</b>	<b>-13.4%</b>
IT Appl Development (includes IT)	38	35	-	73	76	-3	-3.9%
IT Appl Development Online	-	-	6	6	-	6	****
IT Bus/Systems Analysis (includes MIS)	37	14	-	51	60	-9	-15.0%
IT Accounting (includes MIS:Mgmt Actg)	11	-	-	11	5	6	120.0%
Mgmt: Accounting	30	-	-	30	32	-2	-6.3%
Mgmt: Marketing	29	-	-	29	34	-5	-14.7%
Mgmt: Small Business	45	2	-	47	65	-18	-27.7%
Office Systems Tech.	2	-	-	2	6	-4	-66.7%
Operations Management	17	12	-	29	43	-14	-32.6%
<i>SCHOOL OF HEALTH, ARTS AND SCIENCES</i>							
<b>Health Technologies:</b>	<b>882</b>	<b>72</b>	<b>267</b>	<b>1,221</b>	<b>1,155</b>	<b>66</b>	<b>5.7%</b>
Clinical Lab Science	-	48	-	48	46	2	4.3%
Pre-Dental Hygiene	46	-	1	47	63	-16	-25.4%
Dental Hygiene	81	-	-	81	81	0	0.0%
Dental Hygiene (Joint EOU)	-	-	51	51	26	25	96.2%
Dental Hygiene Outreach	-	-	29	29	15	14	93.3%
Echocardiography (Outreach)	-	-	63	63	50	13	26.0%
Health Sciences	80	2	-	82	68	14	20.6%
Pre-Medical Imaging	224	1	-	225	191	34	17.8%
Radiologic Science (RDSC)	143	-	-	143	132	11	8.3%
RDSC Outreach	-	-	25	25	16	9	56.3%
Nuclear Medicine Technology	54	-	-	54	57	-3	-5.3%
Diagnostic Medical Sonography	70	-	-	70	68	2	2.9%
Vascular Technology	82	-	-	82	89	-7	-7.9%
Vascular Technology Outreach	-	-	41	41	33	8	24.2%
Pre-Nursing	55	-	-	55	82	-27	-32.9%
Nursing	45	-	-	45	53	-8	-15.1%
Paramedic Education	-	21	-	21	23	-2	-8.7%
Pre-Respiratory Care	2	-	-	2	4	-2	-50.0%
Respiratory Care	-	-	44	44	47	-3	-6.4%
Respiratory Care Outreach	-	-	13	13	11	2	18.2%
<b>Arts and Sciences:</b>	<b>393</b>	<b>13</b>	<b>342</b>	<b>748</b>	<b>910</b>	<b>-162</b>	<b>-17.8%</b>
Applied Mathematics	7	-	-	7	-	7	****
Applied Psychology	125	-	-	125	151	-26	-17.2%
Associate of Arts	4	-	-	4	12	-8	-66.7%
Communication Studies	48	-	-	48	62	-14	-22.6%
Environmental Sciences	20	-	-	20	23	-3	-13.0%
General Studies	189	13	342	544	662	-118	-17.8%
<b>TOTALS</b>	<b>2,090</b>	<b>363</b>	<b>704</b>	<b>3,157</b>	<b>3,351</b>	<b>-194</b>	<b>-5.8%</b>

\* Based on course location.

\*\* Portland Operations includes Portland East and West campuses, OHSU Joint Programs, and Renewable Energy Systems.

\*\*\* Other includes Boeing, Dental Hygiene-LaGrande, high school Advanced College Placement (statewide), Respiratory Care at Rogue CC, and Klamath degree completion programs.

\*\*\*\* Enrollment not reported in this major the previous year.

SOURCE: Student Extract and SCARF/IR Table

**Table 2.1.8  
ENROLLMENT BY MAJOR  
Fall Terms 2002 to 2006**

<i>Major</i>	<i>2002</i>	<i>2003</i>	<i>2004</i>	<i>2005</i>	<i>2006</i>
<b>SCHOOL OF ENGINEERING, TECHNOLOGY, AND MANAGEMENT</b>					
<b>Engineering:</b>	<b>1,058</b>	<b>1,020</b>	<b>1,005</b>	<b>965</b>	<b>910</b>
Civil Engineering	101	113	118	115	109
Geomatics (Surveying)	47	45	45	50	46
Manufacturing Engineering Tech	117	119	145	147	122
Manufacturing Engineering Tech (Master's)	-	-	7	17	12
Mechanical Engineering	-	-	-	-	17
Mechanical Engineering Tech	167	190	196	204	189
Computer Engineering Tech	217	192	173	129	99
Computer Engineering Tech (Master's)	3	1	-	-	-
Software Engineering Tech	262	240	222	191	175
Electronics Engineering Tech	123	117	99	102	89
Laser Optical Engineering Tech	21	3	-	-	-
Renewable Energy Systems	-	-	-	10	52
<b>Management:</b>	<b>394</b>	<b>381</b>	<b>378</b>	<b>321</b>	<b>278</b>
IT Applications Development (includes IT)	110	90	87	76	73
IT Applications Development Online	-	-	-	-	6
IT Business/Systems Analysis (includes MIS)	79	95	95	60	51
IT Accounting (includes MIS:Mgmt Actg)	17	19	12	5	11
Mgmt: Accounting	39	37	40	32	30
Mgmt: Marketing	42	48	38	34	29
Mgmt: Small Business	45	53	67	65	47
Office Systems Tech	28	9	8	6	2
Operations Management	34	30	30	43	29
Certificates (Accounting & Marketing)	-	-	1	-	-
<b>SCHOOL OF HEALTH, ARTS AND SCIENCES</b>					
<b>Health:</b>	<b>769</b>	<b>917</b>	<b>1,078</b>	<b>1,155</b>	<b>1,221</b>
Clinical Lab Science (includes Pre-CLS in 2002)	45	45	45	46	48
Pre-Dental Hygiene	41	47	57	63	47
Dental Hygiene	54	50	55	81	81
Dental Hygiene (Joint EOU)	-	-	-	26	51
Dental Hygiene Outreach	9	7	15	15	29
Echocardiography (Outreach)	-	10	29	50	63
Health Sciences	71	87	81	68	82
Pre-Medical Imaging	132	202	262	191	225
Radiologic Science (RDSC)	95	105	115	132	143
RDSC: Outreach	8	8	8	16	25
Nuclear Medicine Technology	39	63	59	57	54
Diagnostic Medical Sonography	64	63	68	68	70
Vascular Technology	60	69	86	89	82
Vascular Technology Outreach	17	30	33	33	41
Pre-Nursing	73	67	74	82	55
Nursing	37	31	41	53	45
Paramedic Education	24	33	23	23	21
Pre-Respiratory Care	-	-	-	4	2
Respiratory Care	-	-	26	47	44
Respiratory Care Outreach	-	-	1	11	13
<b>Arts and Sciences:</b>	<b>918</b>	<b>918</b>	<b>912</b>	<b>910</b>	<b>748</b>
Applied Mathematics	-	-	-	-	7
Applied Psychology	195	174	148	151	125
Associate of Arts	15	10	13	12	4
Communication Studies	46	56	65	62	48
Environmental Sciences	44	31	30	23	20
General Studies	618	647	656	662	544
<b>TOTAL</b>	<b>3,139</b>	<b>3,236</b>	<b>3,373</b>	<b>3,351</b>	<b>3,157</b>

SOURCE: Table 2.1.7

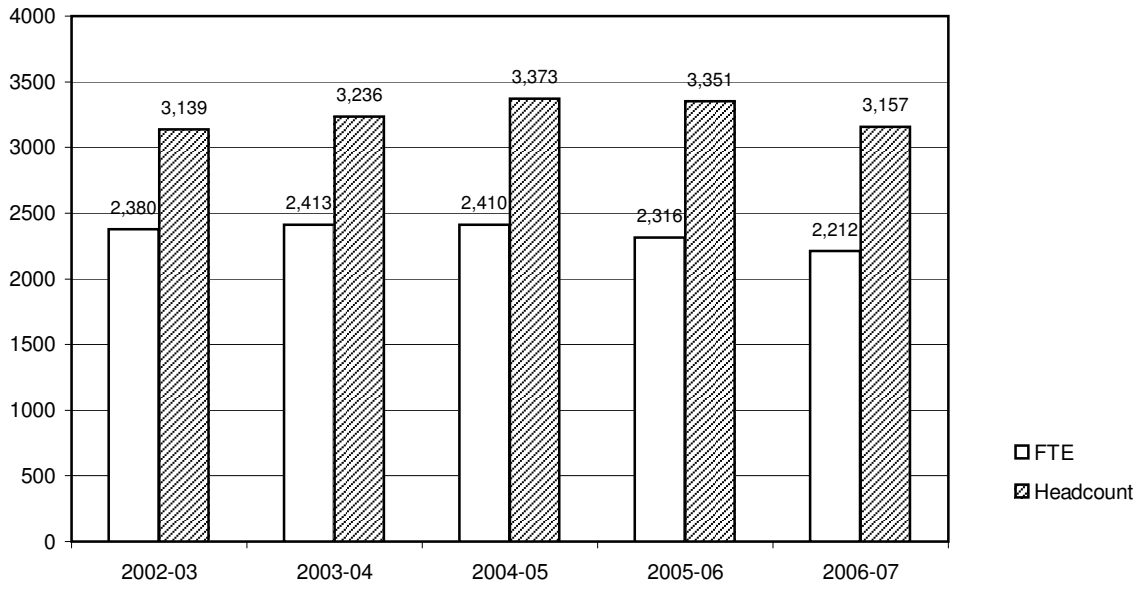
**Table 2.1.9**  
**FTE ENROLLMENT BY STUDENT LEVEL**  
**2006-07 (Fall, Winter, Spring Terms - 4th Week)**

<i>Student Level</i>	<i>Total Student Credit Hours</i>	<i>Student FTE*</i>	<i>Student Headcount</i>	<i>Average Carrying Load</i>
<b>Fall Term</b>	<b>33,167</b>	<b>2212.3</b>	<b>3,157</b>	<b>--</b>
Freshman	6,889	459.3	541	12.7
Sophomore	4,814	320.9	368	13.1
Junior	6,459	430.6	514	12.6
Senior	11,055	737.0	959	11.5
Post-bac/Non-graduate	1,640	109.3	155	10.6
<i>Admitted Undergraduate Total</i>	<i>30,857</i>	<i>2057.1</i>	<i>2,537</i>	<i>12.2</i>
Non-admitted Undergraduate	2,238	149.2	608	3.7
Master's	72	6.0	12	6.0
<b>Winter Term</b>	<b>31,847</b>	<b>2124.3</b>	<b>3,085</b>	<b>--</b>
Freshman	4,716	314.4	355	13.3
Sophomore	4,629	308.6	356	13.0
Junior	6,608	440.5	527	12.5
Senior	12,204	813.6	1,063	11.5
Post-bac/Non-graduate	1,418	94.5	143	9.9
<i>Admitted Undergraduate Total</i>	<i>29,575</i>	<i>1971.7</i>	<i>2,444</i>	<i>12.1</i>
Non-admitted Undergraduate	2,201	146.7	629	3.5
Master's	71	5.9	12	5.9
<b>Spring Term</b>	<b>29,532</b>	<b>1969.9</b>	<b>2,893</b>	<b>--</b>
Freshman	3,454	230.3	267	12.9
Sophomore	3,895	259.7	311	12.5
Junior	5,859	390.6	495	11.8
Senior	12,932	862.1	1,105	11.7
Post-bac/Non-graduate	1,421	94.7	137	10.4
<i>Admitted Undergraduate Total</i>	<i>27,561</i>	<i>1837.4</i>	<i>2,315</i>	<i>11.9</i>
Non-admitted Undergraduate	1,905	127.0	565	3.4
Master's	66	5.5	13	5.1

\* FTE calculation: All undergraduates - total credit hours divided by 15; master's students - total credit hours divided by 12.

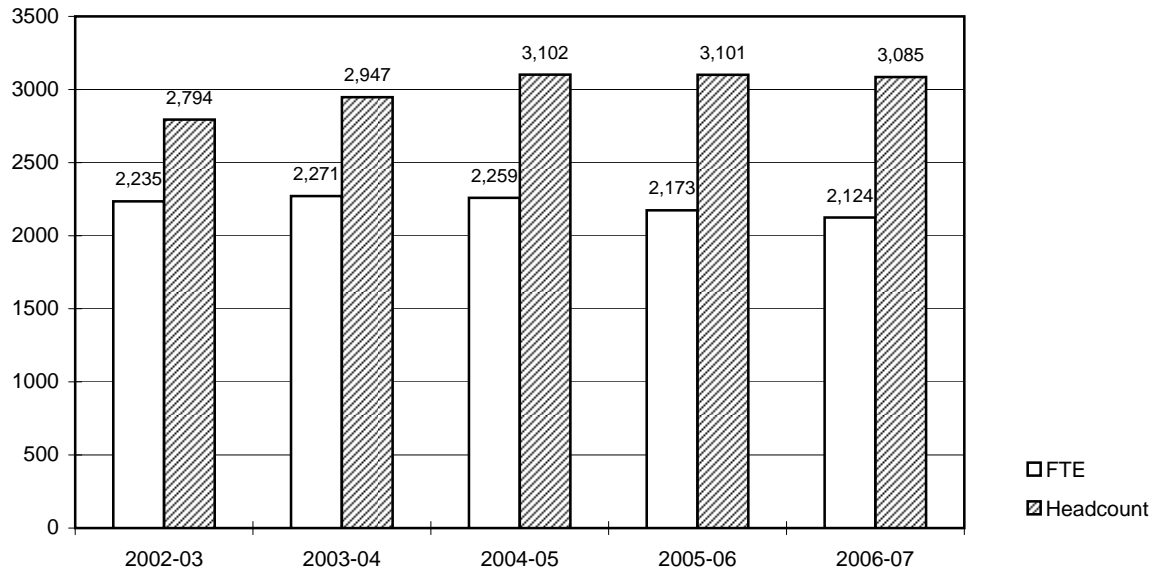
SOURCE: SCARF Enrollment Report (ER-01)

**Graph 2.1.9a**  
**ENROLLMENT HISTORY**  
**Fall Terms 2002-03 to 2006-07 (4th Week)**



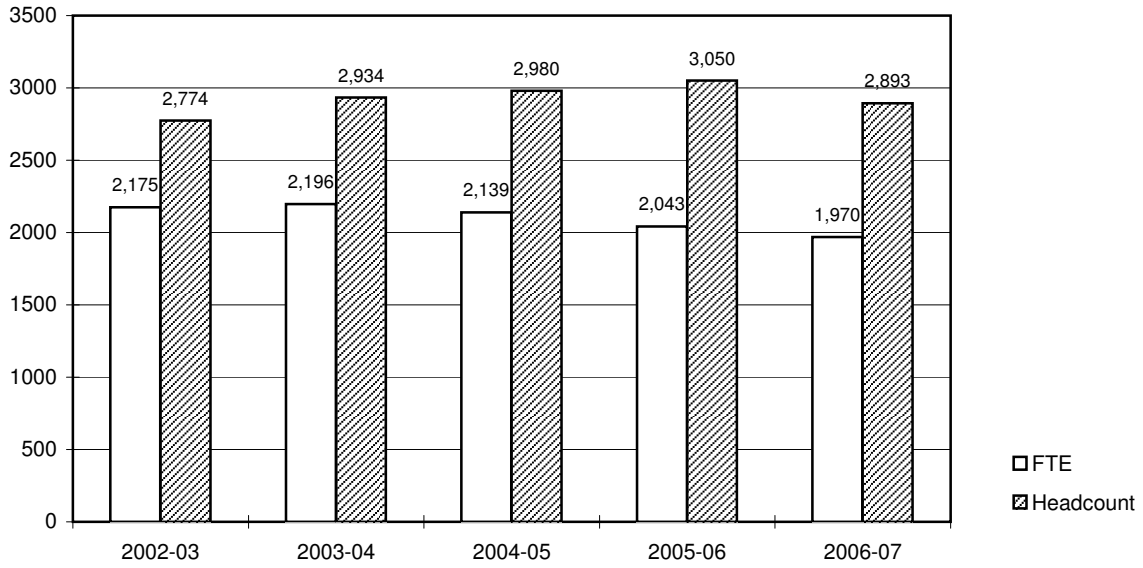
SOURCE: 2002-03 to 2004-05 - SCARF FTE Enrollment Analysis; 2005-06 - Student Extract; 2006-07 - SCARF report ER-01

**Graph 2.1.9b**  
**ENROLLMENT HISTORY**  
**Winter Terms 2002-03 to 2006-07 (4th Week)**



SOURCES: 2002-03 to 2004-05 - SCARF FTE Enrollment Analysis; 2005-06 and forward - SCARF Report ER-01

**Graph 2.1.9c**  
**ENROLLMENT HISTORY**  
**Spring Terms 2002-03 to 2006-07 (4th Week)**



SOURCES: 2002-03 to 2004-05 - SCARF FTE Enrollment Analysis; 2005-06 and forward - SCARF Report ER-01



**Table 2.1.10**  
**HEADCOUNT AND FTE BY CAMPUS/LOCATION\***  
**Fall Terms 1997 to 2006 (4th Week)**

<i>Fall Term</i>	<i>Klamath**</i>		<i>Portland**</i>		<i>Other**</i>		<i>Total</i>	
	<i>Headcount</i>	<i>FTE</i>	<i>Headcount</i>	<i>FTE</i>	<i>Headcount</i>	<i>FTE</i>	<i>Headcount</i>	<i>FTE</i>
1997	2,271	1,827	204	77			2,475	1,904
1998***	2,367	1,901	312	118			2,679	2,019
1999	2,537	2,021	277	103			2,814	2,124
2000	2,512	2,027	330	124			2,842	2,151
2001	2,795	2,237	293	120			3,088	2,357
2002	2,843	2,260	296	120			3,139	2,380
2002	2,374	2,035.5	415	235.1	350	109.3	3,139	2,379.9
2003	2,392	2,053.4	365	222.3	479	137.4	3,236	2,413.1
2004	2,455	2,037.4 +	317	175.6 +	601	196.5 +	3,373	2,409.5
2005	2,251	1,876.9	392	211.3	708	227.3	3,351	2,315.5
2006	2,090	1,780.5	363	206.3	704	225.5	3,157	2,212.3

\* In order to report enrollment based on course location, a redistribution of headcount was made in Fall 2003. Breakdown by campus/location above the solid line is based on student campus code. Below the solid line, it is based on course location except for students enrolled in a combination of Klamath and Portland distance education courses only; headcount for these students is reported under their home campus.. Refer to table 2.1.1 (Part 2) for a detailed breakout of the new location categories.

\*\* Beginning 2003, **Klamath** includes traditional courses at the Klamath campus, high school transition, remedial courses, KCC, externship, field experience, other continuing education, and OHSU Nursing (headcount only); **Portland** includes Portland East/West campuses, OHSU Allied Partnership Programs, Renewable Energy Systems, and Ft. Lewis; and **Other** includes Boeing, Dental Hygiene-LaGrande, high school ACP, degree completion (headcount only in 2005 and 2006), and Respiratory Care (Rogue CC) classes. Prior to 2003, the OHSU Allied Partnership Programs were reported under Klamath.

\*\*\* An on site industry program in the Seattle area was established in 1998 and administered through the Portland campus (note the increase in headcount and FTE). Beginning Fall 1999, the Klamath campus oversees the program and through 2002, is credited with headcount and FTE generated by these students.

+ Corrections have been made to previously reported 2004 FTE figures. In the 2004-05 Fact Book, all FTE was reported under the location of the student instead of the course.

SOURCES: Fall 1996 to 1998 - SCARF [FTE] and Daily Counts/FTE Report [Headcount]  
 Fall 1999 to 2001 - SCARF [FTE] and Student Extracts [Headcount]  
 Fall 2002 and forward - Fact Book table 2.1.1 (Part 2)

**Table 2.1.11  
Credit Hours\* and Annual FTE\*\* by Course Department  
2002-03 to 2006-07**

<i>Course Department</i>	<i>2002-03</i>	<i>2003-04</i>	<i>2004-05</i>	<i>2005-06</i>	<i>2006-07</i>
<b>Credit Hours (Academic Year* Totals)</b>					
<b>School of Engineering, Technology, and Management</b>					
Civil Engineering and Geomatics	3,622	3,923	4,772	4,537	5,091
Computer Systems Engineering Tech	10,821	9,409	7,315	6,049	4,963
Electronics and Laser Engineering Tech	2,439	2,218	2,065	2,056	1,832
Management	13,752	14,540	14,663	12,226	10,541
Manufacturing/Mechanical Engr Tech	4,344	4,464	4,540	4,273	4,135
<b>School of Health, Arts, and Sciences</b>					
Allied Health***	3,594	3,868	4,493	6,408	6,302
Communication	11,449	12,046	11,720	11,554	11,374
Dental Hygiene	2,657	2,230	2,527	4,307	5,310
Humanities and Social Sciences	17,615	17,618	16,449	14,427	12,580
Mathematics	12,248	12,044	11,248	9,277	8,917
Medical Imaging Technology	9,380	10,968	13,690	13,797	14,973
Natural Sciences***	12,923	13,139	13,382	12,302	12,510
<b>Other</b>					
Military Science	102	71	50	34	24
<b>OIT Portland East/West****</b>	<b>5,890</b>	<b>5,922</b>	<b>4,896</b>	<b>5,613</b>	<b>5,735</b>
<b>TOTAL CREDIT HOURS</b>	<b>110,836</b>	<b>112,460</b>	<b>111,810</b>	<b>106,860</b>	<b>104,287</b>
<b>Annual FTE**</b>					
<b>School of Engineering, Technology, and Management</b>					
Civil Engineering and Geomatics	80.5	87.2	106.0	100.8	113.2
Computer Systems Engineering Tech	240.5	209.1	162.6	134.4	110.3
Electronics and Laser Engineering Tech	54.2	49.3	45.9	45.7	40.7
Management	305.7	323.1	325.8	271.7	234.3
Manufacturing/Mechanical Engr Tech	96.5	99.2	102.2	96.9	93.0
<b>School of Health, Arts, and Sciences</b>					
Allied Health***	79.9	86.0	99.8	142.4	140.0
Communication	254.4	267.7	260.4	256.8	252.8
Dental Hygiene	59.0	49.6	56.2	95.7	118.0
Humanities and Social Sciences	391.4	391.4	365.6	320.5	279.6
Mathematics	272.2	267.6	250.0	206.2	198.2
Medical Imaging Technology	208.4	243.7	304.2	306.6	332.7
Natural Sciences***	287.2	292.0	297.4	273.4	278.0
<b>Other</b>					
Military Science	2.3	1.6	1.1	0.8	0.5
<b>OIT Portland East/West****</b>	<b>130.9</b>	<b>131.6</b>	<b>109.1</b>	<b>125.1</b>	<b>127.5</b>
<b>TOTAL ANNUAL FTE</b>	<b>2,463.1</b>	<b>2,499.1</b>	<b>2,486.3</b>	<b>2,377.0</b>	<b>2,318.8</b>

\* Summer through spring (end-of-term)

\*\* Annual FTE is total academic year credit hours divided by 45 for undergraduates and by 36 for graduates.

\*\*\* Allied Health includes Clinical Laboratory Science, Paramedic Education, and Respiratory Care.

\*\*\*\* Based on course campus code. Includes Renewable Energy Systems beginning 2004-05. Previously referred to as Metro/CAPITAL Centers.

SOURCES: 2002-03 and 2003-04 - RAM Model Warehouse; 2004-05 - Course Information Download (ZJRK002) and SCARF REG/SECT Tables; 2005-06 forward - SCARF IR Table

**Table 2.1.12**  
**UNDUPLICATED HEADCOUNT IN CREDIT COURSES\***  
**2001-02 to 2005-06**

<b><i>Type of Course</i></b>	<b><i>2001-02</i></b>	<b><i>2002-03</i></b>	<b><i>2003-04</i></b>	<b><i>2004-05</i></b>	<b><i>2005-06</i></b>
Regular	3,429	3,464	3,576	3,675	3,550
Extended**	682	611	641	841	964
<b>Total</b>	<b>4,111</b>	<b>4,075</b>	<b>4,217</b>	<b>4,516</b>	<b>4,514</b>

\* Includes all credit-bearing student enrollment, either in regular campus courses (base enrollment) or through self-supported courses (extended enrollment), summer through spring terms. Students enrolled at both the undergraduate and graduate levels are counted twice.

\*\* The "extended" category includes students enrolled only in extended courses (such as distance education, continuing education or remedial courses). Students enrolled in regular courses only or a combination of regular and extended courses are counted in the regular category.

SOURCE: OUS Institutional Research Services (ERAN-01 and ERAN-05)

**Table 2.1.13  
Distance Education Enrollment Summary  
2006-07 (End-of-Term)**

<b>Enrollment in Distance Education Courses</b>									
<b>Student Campus</b>	<b>Course Campus</b>	<b>Summer 2006</b>		<b>Fall 2006</b>		<b>Winter 2007</b>		<b>Spring 2007</b>	
		<b>Duplicated Headcount</b>	<b>FTE*</b>	<b>Duplicated Headcount</b>	<b>FTE*</b>	<b>Duplicated Headcount</b>	<b>FTE*</b>	<b>Duplicated Headcount</b>	<b>FTE*</b>
Klamath	Klamath	791	145.3	941	177.5	915	169.7	800	147.2
Klamath	Portland	6	1.0	19	3.3	10	1.9	4	0.9
Portland	Portland	42	8.0	81	15.5	38	8.5	28	6.1
Portland	Klamath	112	19.3	115	21.3	107	18.9	95	18.1
<b>TOTAL</b>		<b>951</b>	<b>173.6</b>	<b>1,156</b>	<b>217.6</b>	<b>1,070</b>	<b>199.0</b>	<b>927</b>	<b>172.2</b>

<b>Unduplicated Headcount of Students Enrolled in DE Courses</b>									
<b>Student Campus</b>	<b>Summer 2006</b>		<b>Fall 2006</b>		<b>Winter 2007</b>		<b>Spring 2007</b>		
	<b>Number</b>	<b>Percent</b>	<b>Number</b>	<b>Percent</b>	<b>Number</b>	<b>Percent</b>	<b>Number</b>	<b>Percent</b>	
Klamath**	489	82%	546	79%	622	86%	582	87%	
Portland	107	18%	142	21%	103	14%	89	13%	
<b>TOTAL</b>	<b>596</b>	<b>100%</b>	<b>688</b>	<b>100%</b>	<b>725</b>	<b>100%</b>	<b>671</b>	<b>100%</b>	

\* FTE calculation: All undergraduates - total credit hours divided by 15; master's students - total credit hours divided by 12.

\*\* Includes Degree Completion, Dental Hygiene-LaGrande, Information Technology Online, and Respiratory Care programs.

NOTE: Duplicated Headcount is the total enrollment in all distance education sections. A student is counted more than once if enrolled in more than one DE class.

SOURCES: Student Extract and SCARF REG/SECT files

**Table 2.2.1**  
**AVERAGE AGE BY STUDENT LEVEL AND GENDER**  
**Fall 2006 -- 4th Week**

<i><b>Student Level</b></i>	<i><b>Male</b></i>	<i><b>Female</b></i>	<i><b>Total</b></i>
Freshman	22.3	21.9	22.1
Sophomore	22.9	25.2	23.9
Junior	25.9	26.3	26.1
Senior	29.6	32.1	30.8
Postbac UG	36.2	32.6	34.3
Non-admitted UG	25.4	22.4	23.7
Master's	37.1	50.8	38.3
ALL STUDENTS	26.5	26.6	26.6

SOURCE: Student Extract

**Table 2.2.2**  
**HEADCOUNT DISTRIBUTION BY AGE**  
**Fall Terms 2002 to 2006**

<b>Age</b>	<b>2002</b>	<b>2003</b>	<b>2004</b>	<b>2005</b>	<b>2006</b>
18 and under*	581	711	706	657	606
19-20	597	589	593	569	514
21-22	506	555	572	525	516
23-24	253	284	317	334	294
25-29	391	358	368	400	439
30-39	436	393	408	457	395
40-49	282	267	304	289	263
50 and over	91	77	100	120	130
Unknown	2	2	5	--	--
<b>TOTAL</b>	<b>3,139</b>	<b>3,236</b>	<b>3,373</b>	<b>3,351</b>	<b>3,157</b>
<b>Average Age**</b>	<b>26.4</b>	<b>25.6</b>	<b>26.0</b>	<b>26.4</b>	<b>26.6</b>

\* Beginning Fall 2003, the number of high school Advanced College Placement students grew significantly resulting in an increase in students aged 18 and under.

\*\* Beginning Fall 2003, average age is calculated based on the exact age of students (years and days). Averages for 2002 shown here are based on this new methodology and will differ from earlier editions of the Fact Book.

SOURCES: Student Extract, Fall Terms 4th Week  
 OUS/Institutional Research ERDD-01 Report (average age Fall 2002)

**Table 2.2.3**  
**ENROLLMENT BY GEOGRAPHIC ORIGIN\***  
**Fall Terms 2002 to 2006**

<i><b>Geographic Origin</b></i>	<i><b>2002</b></i>	<i><b>2003</b></i>	<i><b>2004</b></i>	<i><b>2005</b></i>	<i><b>2006</b></i>
Alaska	19	19	15	11	12
California	117	130	133	134	158
Hawaii	18	17	17	22	23
Idaho	11	14	20	13	21
Oregon	2,715	2,818	2,894	2,832	2,561
Washington	174	134	169	197	202
Other U.S. States	70	86	110	128	168
Foreign Countries	15	17	15	14	12
Unknown Source	0	1	0	0	0
<b>TOTAL</b>	<b>3,139</b>	<b>3,236</b>	<b>3,373</b>	<b>3,351</b>	<b>3,157</b>

\* Based on student's address at time of application.

SOURCE: 2002 to 2004 - Enrollment Analysis by Geographic Source (SCARF Report);  
2005 forward - Student Extract, Fall Terms -- 4th Week

**Table 2.2.4**  
**STUDENTS FROM OREGON\* BY COUNTY**  
**Fall 2006**

<u>County</u>	<u>#</u>	<u>%</u>	<u>County</u>	<u>#</u>	<u>%</u>	<u>County</u>	<u>#</u>	<u>%</u>
Baker	4	0.2%	Hood River	6	0.2%	Polk	14	0.5%
Benton	27	1.1%	Jackson	211	8.2%	Sherman	1	0.0%
Clackamas	115	4.5%	Jefferson	17	0.7%	Tillamook	13	0.5%
Clatsop	20	0.8%	Josephine	68	2.7%	Umatilla	31	1.2%
Columbia	22	0.9%	Klamath	911	35.6%	Union	36	1.4%
Coos	55	2.1%	Lake	21	0.8%	Wallowa	2	0.08%
Crook	53	2.1%	Lane	102	4.0%	Wasco	16	0.6%
Curry	14	0.5%	Lincoln	10	0.4%	Washington	142	5.5%
Deschutes	175	6.8%	Linn	45	1.8%	Wheeler	2	0.1%
Douglas	67	2.6%	Malheur	3	0.1%	Yamhill	33	1.3%
Gilliam	2	0.08%	Marion	96	3.7%	Unknown County	0	0.0%
Grant	4	0.2%	Morrow	9	0.4%	<b>Total Students</b>		
Harney	6	0.2%	Multnomah	208	8.1%	<b>from Oregon</b>	<b>2,561</b>	

\* Based on student's address at time of application.

SOURCE: Student Extract



**Table 2.2.5**  
**ENROLLMENT BY PREVIOUS ATTENDANCE**  
**2002 to 2006 (Fall Terms -- 4th Week)**

<b><i>Previous Attendance</i></b>	<b>2002</b>	<b>2003</b>	<b>2004</b>	<b>2005</b>	<b>2006</b>
<i>Continuing w/o Interruption</i>	1,791	1,820	1,880	1,850	1,765
<i>Returning After Absence</i>	238	277	179	187	190
<i>New Admits from High School or GED</i>	367	358	321	265	296
Oregon High School	295	296	282	222	247
Other U.S. High School	50	46	29	39	44
Foreign H.S.	1	5	5	1	2
GED	20	11	5	3	3
Unknown High School	1	--	--	--	--
<i>New Admits from Colleges &amp; Universities</i>	356	355	450	452	457
OUS Institution	45	42	44	43	35
Oregon Community College	199	185	248	238	201
Other Oregon College	2	7	3	7	2
Other U.S. College	97	91	98	105	143
Foreign College	--	--	7	5	2
Unknown College	13	30	50	54	74
<i>New Non-Admits</i>	387	426	543	597	449
<b>TOTAL</b>	<b>3,139</b>	<b>3,236</b>	<b>3,373</b>	<b>3,351</b>	<b>3,157</b>

SOURCE: OUS Institutional Research Services (Report ERTE-01 Part 2)

**Table 2.2.6**  
**AVERAGE HIGH SCHOOL GPA OF FIRST-TIME FRESHMEN**  
**by Gender & Residency**  
**2002 to 2006 (Fall Terms -- 4th Week)**

	<i>2002</i>	<i>2003</i>	<i>2004</i>	<i>2005</i>	<i>2006</i>
<i>Gender</i>					
Male	3.24	3.27	3.38	3.44	3.32
Female	3.42	3.47	3.49	3.58	3.54
<i>Residency</i>					
Resident	3.30	3.36	3.44	3.53	3.43
Non-resident	3.24	3.33	3.29	3.36	3.36
<i>All First-Time Freshmen</i>	<i>3.30</i>	<i>3.36</i>	<i>3.43</i>	<i>3.51</i>	<i>3.42</i>

SOURCE: OUS Institutional Research Services

**Table 2.2.7**  
**ENROLLMENT OF FIRST-TIME FRESHMEN BY HIGH SCHOOL GPA AND GENDER**  
**Fall 2006 -- 4th Week**

<i><b>High School GPA</b></i>	<i><b>Male</b></i>	<i><b>Female</b></i>	<i><b>Total</b></i>
3.75 and above	26	45	71
3.50 - 3.74	31	40	71
3.25 - 3.49	28	20	48
3.00 - 3.24	37	22	59
2.75 - 2.99	18	6	24
2.50 - 2.74	11	3	14
2.25 - 2.49	2	0	2
2.00 - 2.24	0	0	0
Less than 2.00	1	0	1
GED Admits	2	1	3
No GPA Reported	2	1	3
<b>TOTAL</b>	<b>158</b>	<b>138</b>	<b>296</b>
<i>Average GPA</i>	<i>3.32</i>	<i>3.54</i>	<i>3.42</i>

SOURCE: OUS Institutional Research Services

**Table 2.2.8**  
**ENROLLMENT OF FIRST-TIME FRESHMEN BY HIGH SCHOOL GPA AND RESIDENCY**  
**Fall 2006 -- 4th Week**

<b><i>High School GPA</i></b>	<b><i>Resident</i></b>	<b><i>Non-Resident</i></b>	<b><i>Total</i></b>
3.75 and above	62	9	71
3.50 - 3.74	63	8	71
3.25 - 3.49	42	6	48
3.00 - 3.24	48	11	59
2.75 - 2.99	22	2	24
2.50 - 2.74	12	2	14
2.25 - 2.49	2	0	2
2.00 - 2.24	0	0	0
Less than 2.00	0	1	1
GED Admits	3	0	3
No GPA Reported	1	2	3
<b>TOTAL</b>	<b>255</b>	<b>41</b>	<b>296</b>
<i>Average GPA</i>	<i>3.43</i>	<i>3.36</i>	<i>3.42</i>

SOURCE: OUS Institutional Research Services

**Table 2.2.9**  
**FIRST-TIME FRESHMEN SAT TEST SCORE STATISTICS**  
**Fall 2006 -- 4th Week**

<b>Gender</b>	<b>Middle 50% Range of Scores</b>			<b># with Scores</b>
	<b>Math</b>	<b>Verbal</b>	<b>Combined</b>	
Male	520-610	450-580	970-1180	145
Female	460-540	430-540	900-1050	118
ALL	480-580	440-570	930-1140	263

<b>Gender</b>	<b>Average Scores</b>			<b># with Scores</b>
	<b>Math</b>	<b>Verbal</b>	<b>Combined</b>	
Male	558.14	518.97	1077.10	145
Female	496.86	484.24	981.10	118
ALL	530.65	503.38	1034.03	263

SOURCE: OUS Institutional Research Services

**Table 2.2.10  
ADMISSIONS SUMMARY\*  
Fall 2006**

<b>Admit Status</b>	<b>Freshman</b>	<b>Transfer**</b>	<b>Postbac</b>	<b>Graduate</b>	<b>Total</b>
<b>Admitted</b>	<b>598</b>	<b>549</b>	<b>84</b>	<b>1</b>	<b>1,232</b>
Active Admits	404	441	69	0	914
Cancelled Admits***	194	108	15	1	318
<b>Denied</b>	<b>75</b>	<b>29</b>	<b>7</b>	<b>1</b>	<b>112</b>
<b>Total Completed Applications</b>	<b>673</b>	<b>578</b>	<b>91</b>	<b>2</b>	<b>1,344</b>
<b>Pending</b>	<b>121</b>	<b>86</b>	<b>15</b>	<b>1</b>	<b>223</b>
Pending Applications	17	20	6	0	43
Cancelled Pending Apps***	104	66	9	1	180
<b>TOTAL APPLICATIONS</b>	<b>794</b>	<b>664</b>	<b>106</b>	<b>3</b>	<b>1,567</b>

\* Data in this table differs slightly from the applicant yield report generated by the Admissions Office. This is due to a difference in run date of each report. Admissions data in the Banner system is updated throughout the term.

\*\* It is possible for a transfer student to have a class level of freshman. A student must have earned at least 36 college credits to be admitted as a transfer student. Thus, if a student has 36 but fewer than 45 credits, they would have a class level of freshman. A transfer student will also be classified as a freshman if their college transcripts have not been evaluated and credits posted to the Banner system.

\*\*\* Students who submitted applications, but who will not be attending OIT.

SOURCE: Characteristics by Application Status (ZJRA036); report generated 10/25/2006.

**Table 2.2.11**  
**GRADE DISTRIBUTION BY DEPARTMENT\***  
**Fall 2006**

<i>Department</i>	<i>Percent of Total Grades Given</i>							<i>Total Grades Given</i>
	<i>A</i>	<i>B</i>	<i>C</i>	<i>D</i>	<i>F</i>	<i>W</i>	<i>Other**</i>	
Allied Health***	49.1	27.2	9.5	0.8	0.0	1.8	11.6	389
Civil Engineering	33.9	30.3	19.1	5.3	2.9	3.3	5.3	419
Communication	46.7	29.5	9.3	1.8	4.9	4.2	3.7	840
Computer Engineering	48.5	22.6	14.8	2.2	4.4	2.4	5.0	499
Dental Hygiene	77.9	19.9	1.1	0.0	0.0	0.2	0.9	467
Electronics Engineering	45.0	30.7	12.1	6.1	4.3	0.9	0.9	231
Humanities/Social Sciences	42.3	30.1	15.4	4.0	3.3	3.8	1.0	1,068
Management	43.6	26.7	13.5	4.4	4.4	4.9	2.5	709
Manufacturing Engineering	59.2	22.4	12.2	0.0	4.1	2.0	0.0	49
Mathematics	23.3	24.2	21.8	8.3	10.9	10.4	1.1	737
Mechanical Engineering	47.9	26.0	14.8	2.6	4.2	1.6	2.9	311
Medical Imaging	49.3	37.7	9.2	1.4	1.0	1.4	0.0	860
Natural Sciences	38.5	28.4	17.0	5.0	4.3	6.7	0.1	1,306
Metro/CAPITAL Centers****	58.3	21.1	7.6	1.6	2.3	5.4	3.7	516
<b>INSTITUTIONAL TOTAL</b>	<b>44.9</b>	<b>27.9</b>	<b>13.3</b>	<b>3.5</b>	<b>3.8</b>	<b>4.3</b>	<b>2.3</b>	<b>8,401</b>

\* Excludes Advanced College Placement, Military Science, Physical Education, Distance Education, and other continuing education classes. In addition, grades in graduate classes are excluded.

\*\* Includes Incomplete, In Progress, Pass, and Audit grades.

\*\*\* Includes Clinical Lab Science, Paramedic, and Respiratory Care classes.

\*\*\*\* Prior to Fall 2004, included courses with a Metro department code; beginning Fall 2004, includes courses with a Metro campus code.

SOURCE: Course Extract

**Table 2.2.12**  
**OVERALL GRADE DISTRIBUTION\***  
**2002 to 2006 (Fall Terms)**

<b>Grade</b>	<b>Percent of Total Grades Given</b>				
	<b>2002</b>	<b>2003</b>	<b>2004</b>	<b>2005</b>	<b>2006</b>
A	44%	42%	43%	43%	45%
B	27%	26%	27%	28%	28%
C	12%	14%	14%	13%	13%
D	3%	4%	3%	4%	4%
F	4%	4%	4%	4%	4%
W	7%	8%	7%	5%	4%
Other**	2%	2%	2%	3%	2%
<b>TOTAL</b>	<b>10,211</b>	<b>10,320</b>	<b>9,645</b>	<b>8,901</b>	<b>8,401</b>

\* Excludes Advanced College Placement, Military Science, Physical Education, Distance Education, and other continuing education classes. Beginning 2006, grades in graduate classes are excluded.

\*\* Includes Incomplete, In Progress, Pass and Audit grades.

SOURCE: Table 2.2.11



**Table 2.2.13 (Part 1)**  
**DEGREES AWARDED BY MAJOR**  
**2002-03 to 2006-07**

<i>Degree/Program</i>	<i>2002-03</i>	<i>2003-04</i>	<i>2004-05</i>	<i>2005-06</i>	<i>2006-07</i>
<b>Master of Science in Engineering Technology</b>	<b>4</b>	<b>2</b>	<b>--</b>	<b>--</b>	<b>3</b>
Computer Engineering Technology	4	2	--	--	--
Manufacturing Engineering Technology					3
<b>Bachelor of Science</b>	<b>365</b>	<b>408</b>	<b>496</b>	<b>461</b>	<b>489</b>
<b>Arts and Sciences</b>					
Applied Psychology	48	45	54	46	44
Biology	--	--	--	--	10
Communication Studies	2	9	13	13	13
Environmental Sciences	4	6	7	6	2
<b>Engineering</b>					
Civil Engineering	20	18	25	20	23
Geomatics (Surveying)	10	7	10	7	10
Manufacturing Engineering Technology	18	25	17	22	29
Mechanical Engineering	--	--	--	--	3
Mechanical Engineering Technology	14	30	27	32	31
Computer Engineering Technology	9	17	20	28	15
Software Engineering Technology	44	47	48	47	44
Electronics Engineering Technology	20	16	12	19	18
Laser Optical Engineering Technology	5	5	2	1	--
Diesel Power Technology*	--	--	1	--	--
<b>Health</b>					
Clinical Lab Science	19	23	18	22	23
Dental Hygiene	25	17	17	27	29
Dental Hygiene Outreach	1	2	6	5	6
Echocardiography	--	--	--	1	6
Health Sciences	10	10	11	7	1
Radiologic Science (RDSC)	23	23	34	34	43
Radiologic Science Outreach	1	2	3	1	4
Nuclear Medicine Technology	5	11	21	15	18
Respiratory Care Outreach	--	--	--	2	5
Diagnostic Medical Sonography	19	15	23	16	22
Vascular Technology	11	14	21	23	23
Vascular Technology Outreach	1	1	4	8	8
<b>Management</b>					
IT Appl Development (includes IT)	10	15	19	9	12
IT Bus/Systems Analysis (includes MIS)	16	19	35	11	13
IT Accounting (includes MIS:Mgmt Actg)	2	3	3	2	--
Management: Accounting Option	6	8	2	5	8
Management: Marketing Option	6	10	19	12	9
Management: Small Business Option	10	6	15	13	9
Operations Management	6	4	9	7	8
<b>Total Associate Degrees</b>	<b>79</b>	<b>85</b>	<b>74</b>	<b>80</b>	<b>98</b>
<b>Associate of Arts</b>	<b>17</b>	<b>19</b>	<b>19</b>	<b>14</b>	<b>13</b>
<b>Associate of Applied Science</b>	<b>41</b>	<b>56</b>	<b>36</b>	<b>43</b>	<b>68</b>
<b>Engineering</b>					
Diesel Power Technology*	--	--	1	--	--
<b>Health</b>					
Dental Hygiene	30	20	1	--	--
Dental Hygiene/LaGrande	--	--	--	--	25
Paramedic Education	--	26	29	22	19
Respiratory Care	--	--	--	19	23
<b>Management</b>					
Office Systems Technology	11	10	5	2	1
<b>Associate of Engineering</b>	<b>21</b>	<b>10</b>	<b>19</b>	<b>23</b>	<b>17</b>
Computer Engineering Technology	6	4	5	10	7
Electronics Engineering Technology	4	3	5	2	3
Software Engineering Technology	11	3	9	11	7
<b>TOTAL DEGREES AWARDED</b>	<b>448</b>	<b>495</b>	<b>570</b>	<b>541</b>	<b>590</b>

\* Discontinued program

SOURCE: Table 2.2.14

**Table 2.2.13 (Part 2)**

**MINORS AWARDED SINCE INCEPTION  
1998-99 through 2006-07**

<b>Minor</b>	<b>1998-99</b>	<b>1999-00</b>	<b>2000-01</b>	<b>2001-02</b>	<b>2002-03</b>	<b>2003-04</b>	<b>2004-05</b>	<b>2005-06</b>	<b>2006-07</b>
Applied Mathematics	-	-	3	7	10	16	14	28	18
Business	-	-	-	4	16	26	41	22	33
Geographic Information Science	-	-	-	-	-	-	-	-	1
Information Technology	-	-	-	-	-	-	-	-	2
International Business	-	-	-	-	-	2	2	-	3
International Relations	-	-	-	-	1	6	9	-	3
Management Information Systems	-	-	-	-	1	2	7	2	1
Medical Information Systems	-	-	-	-	-	-	1	-	-
Psychology	-	-	-	3	1	2	12	11	13
Technical Communication	6	5	10	7	4	13	10	2	3
<b>TOTAL</b>	<b>6</b>	<b>5</b>	<b>13</b>	<b>21</b>	<b>33</b>	<b>67</b>	<b>96</b>	<b>65</b>	<b>77</b>

SOURCE: Minors Awarded by Academic Year (ZJRR165)

**Table 2.2.14  
DEGREES AWARDED BY ETHNICITY AND GENDER  
2006-07**

Degree/Program	American Indian/ Alaska Native		Asian/Pacific Islander		Black/African American		Hispanic		White Non-Hispanic		International Student		Unknown		TOTALS		
	M	F	M	F	M	F	M	F	M	F	M	F	M	F	M	F	ALL
<b>Master of Science</b>	-	-	-	-	-	-	-	-	2	1	-	-	-	-	2	1	3
Manufacturing Engr Tech	-	-	-	-	-	-	-	-	2	1	-	-	-	-	2	1	3
<b>Bachelor of Science</b>	2	6	19	8	3	1	6	3	230	177	7	2	16	9	283	206	489
<b>Arts and Sciences</b>	-	2	1	-	2	-	1	3	22	35	-	-	1	2	27	42	69
Applied Psychology	-	2	1	-	1	-	1	2	10	25	-	-	-	2	13	31	44
Biology	-	-	-	-	-	-	-	-	3	6	-	-	1	-	4	6	10
Communication Studies	-	-	-	-	1	-	-	1	8	3	-	-	-	-	9	4	13
Environmental Sciences	-	-	-	-	-	-	-	-	1	1	-	-	-	-	1	1	2
<b>Engineering</b>	1	1	11	1	-	-	3	-	127	13	5	-	11	-	158	15	173
Civil Engineering	-	1	-	-	-	-	-	-	16	5	-	-	1	-	17	6	23
Geomatics	-	-	-	-	-	-	-	-	7	1	-	-	2	-	9	1	10
Manufacturing Engr Tech	-	-	4	1	-	-	-	-	18	3	-	-	3	-	25	4	29
Mechanical Engr	-	-	-	-	-	-	-	-	3	-	-	-	-	-	3	-	3
Mechanical Engr Tech	-	-	2	-	-	-	1	-	20	3	4	-	1	-	28	3	31
Computer Engr Tech	-	-	-	-	-	-	-	-	14	-	-	-	1	-	15	-	15
Software Engr Tech	1	-	3	-	-	-	2	-	36	-	-	-	2	-	44	-	44
Electronics Engr Tech	-	-	2	-	-	-	-	-	13	1	1	-	1	-	17	1	18
<b>Health</b>	1	3	3	6	-	-	1	-	54	110	-	-	3	7	62	126	188
Clinical Lab Science	-	1	2	4	-	-	-	-	2	14	-	-	-	-	4	19	23
Dental Hygiene	-	1	-	-	-	-	-	-	-	27	-	-	-	1	-	29	29
Dental Hygiene Outrch	-	-	-	-	-	-	-	-	-	5	-	-	-	1	-	6	6
Echocardiography	-	-	-	-	-	-	-	-	1	5	-	-	-	-	1	5	6
Health Sciences	-	-	-	-	-	-	-	-	1	-	-	-	-	-	1	-	1
Radiologic Science	1	1	1	2	-	-	1	-	20	16	-	-	-	1	23	20	43
RDSC Outreach	-	-	-	-	-	-	-	-	4	-	-	-	-	-	4	-	4
Nuclear Medicine Tech	-	-	-	-	-	-	-	-	11	5	-	-	2	-	13	5	18
Respiratory Care Outrch	-	-	-	-	-	-	-	-	1	3	-	-	1	-	2	3	5
Diag Med Sonography	-	-	-	-	-	-	-	-	3	17	-	-	-	2	3	19	22
Vascular Technology	-	-	-	-	-	-	-	-	9	13	-	-	-	1	9	14	23
Vascular Tech Outreach	-	-	-	-	-	-	-	-	2	5	-	-	-	1	2	6	8
<b>Management</b>	-	-	4	1	1	1	1	-	27	19	2	2	1	-	36	23	59
IT Appl Development	-	-	-	-	-	-	1	-	10	1	-	-	-	-	11	1	12
IT Bus/Systems Analysis	-	-	2	-	1	-	-	-	8	1	-	1	-	-	11	2	13
IT Accounting	-	-	-	-	-	-	-	-	-	-	-	-	-	-	-	-	-
Mgmt: Accounting	-	-	-	1	-	-	-	-	-	7	-	-	-	-	-	8	8
Mgmt: Marketing	-	-	-	-	-	1	-	-	2	3	2	-	1	-	5	4	9
Mgmt: Small Business	-	-	1	-	-	-	-	-	2	6	-	-	-	-	3	6	9
Operations Mgmt	-	-	1	-	-	-	-	-	5	1	-	1	-	-	6	2	8
<b>Total Assoc Degrees</b>	-	2	4	1	1	-	2	3	24	48	2	1	6	4	39	59	98
<b>Associate of Arts</b>	-	1	1	-	-	-	-	-	2	9	-	-	-	-	3	10	13
<b>A.A.S.</b>	-	1	2	1	-	-	2	3	12	38	-	1	4	4	20	48	68
<b>Health</b>																	
Dental Hygiene/LaGrand	-	-	-	-	-	-	-	1	-	23	-	-	-	1	-	25	25
Paramedic Educ	-	-	1	1	-	-	2	1	6	1	-	-	4	3	13	6	19
Respiratory Care	-	1	1	-	-	-	-	1	6	13	-	1	-	-	7	16	23
<b>Management</b>																	
Office Systems Tech	-	-	-	-	-	-	-	-	-	1	-	-	-	-	-	1	1
<b>A.E.</b>	-	-	1	-	1	-	-	-	10	1	2	-	2	-	16	1	17
Computer Engr Tech	-	-	1	-	-	-	-	-	5	-	1	-	-	-	7	-	7
Electronics Engr Tech	-	-	-	-	-	-	-	-	-	1	-	-	2	-	2	1	3
Software Engr Tech	-	-	-	-	1	-	-	-	5	-	1	-	-	-	7	-	7
<b>TOTAL</b>	2	8	23	9	4	1	8	6	256	226	9	3	22	13	324	266	590

SOURCE: Graduate Analysis by Degree and Major (ZJRRDEG)

**Table 2.2.15**  
**FRESHMAN ENROLLMENT FROM MAJOR FEEDER AREAS**  
**Fall 2005 and Fall 2006 (4th Week)**

	Fall 2005			Fall 2006		
	Number	% of OR	% of Total	Number	% of OR	% of Total
Total All OIT Freshmen	566	--	100.0	541	--	100.0
Total Oregon OIT freshmen	506	100.0	89.4	458	100.0	84.7
Klamath County	154	30.4	27.2	139	30.3	25.7
Jackson County	55	10.9	9.7	56	12.2	10.4
Subtotal	209	41.3	36.9	195	42.6	36.0
Clackamas County	23	4.5	4.1	24	5.2	4.4
Multnomah County	43	8.5	7.6	28	6.1	5.2
Washington County	27	5.3	4.8	28	6.1	5.2
Subtotal	93	18.4	16.4	80	17.5	14.8
Lane County	22	4.3	3.9	14	3.1	2.6
Marion County	24	4.7	4.2	18	3.9	3.3
Douglas County	11	2.2	1.9	18	3.9	3.3
Subtotal	57	11.3	10.1	50	10.9	9.2

SOURCE: Student Extract

**Table 2.3.1**  
**OWLS COMPETE IN NAIA**

The National Association of Intercollegiate Athletics (NAIA) currently administers intercollegiate programs for nearly 300 colleges and universities of moderate enrollment. The purpose of the NAIA is to promote the education and development of students through intercollegiate athletic participation. Member institutions, although varied and diverse, share a common commitment to high standards and the principle that athletics serve as an integral part of education.

Established in 1940 as the National Association of Intercollegiate Basketball, the NAIB evolved from a "National Small College Basketball Tournament" in 1937. The NAIB was renamed the NAIA in 1952 and is currently headquartered in Olathe, Kansas.

NAIA schools are split into Division I and Division II based on the amount of financial aid available from the member institutions to their student athletes. Division II, of which Oregon Institute of Technology is a member, offers the equivalent of six full scholarships, while Division I schools offer 11 scholarships.

The NAIA divides the United States and British Columbia into 26 conference entities of various proportions for qualifying into their national tournaments. They currently organize and conduct 23 national championships, 12 for men and 11 for women in 13 different sports.

OIT is a member of the Cascade Collegiate Conference with Eastern and Southern Oregon Universities; Cascade College, Concordia University, Corban College, Northwest Christian College and Warner Pacific College in Oregon. Other conference members include Albertson College (Idaho) Evergreen State (Wash.) and Northwest University (Washington).

OIT competes in cross-country, track and field and basketball (men and women), baseball (men), softball, soccer (men and women) and volleyball (women).

SOURCE: OIT Athletics, Recreation and Fitness Center

**Table 2.3.2  
INTERCOLLEGIATE ATHLETICS  
2007-08**

Director of Athletics: **Michael Schell**

***MEN'S SPORTS***

**Baseball**  
**Basketball**  
**Cross Country**  
**Soccer**  
**Track & Field**

***COACH***

Matt Miles  
Dan Miles  
Ken Coffman  
Bryan Mueller  
Ken Coffman

***WOMEN'S SPORTS***

**Basketball**  
**Cross Country**  
**Soccer**  
**Softball**  
**Track & Field**  
**Volleyball**

***COACH***

Matt Greenleaf  
Ken Coffman  
Bryan Mueller  
Greg Stewart  
Ken Coffman  
Angela Stewart

SOURCE: OIT Athletics, Recreation and Fitness Center

**Table 2.3.3**  
**ATHLETIC ACHIEVEMENTS**  
**2006-07**

Oregon Institute of Technology had 24 All-American Scholar Athletes and numerous on the field honorees for the 2006-2007 school year.

The men's basketball team went 28-5, won the regular season berth to the national tournament as conference co-champions, making their ninth trip in the last 11 years to the "big dance." Tech lost in the second round to Indiana Wesleyan. Lavell Hesia finished his outstanding career making 2<sup>nd</sup> team All-American. It was his third such honor in the past three years. Ryan Fiegi was also selected to the 2<sup>nd</sup> team All-America. Hesia, Fiegi and Joshua Garrett became the first threesome from one school to make 1<sup>st</sup> team All-Cascade Conference. Fiegi, Danny Mills and Alan Johnson were named All-American Scholar Athletes.

For the fifth straight year under coach Tom Loney, the women won 20+ games with a record of 21-9. Cora McVey was named the conference Newcomer of the Year, Defensive Player of the Year and 1<sup>st</sup> team All-Conference. Lindsey Carmichael, Kelsi Haylett and Brandy Bocchi were selected as All-American Scholar Athletes.

The soccer team under 2<sup>nd</sup> year head man Bryan Mueller made the playoffs for the first time in school history and then won a first round playoff game in a shoot-out. For the second consecutive year Brandy Bocchi was first team all-conference while Bocchi, Amy Speakman, Sharlie McAdams, Brittany Garton, Kali Caleb and Sarah Bryan were named All-American Scholar Athletes.

The volleyball team under 5<sup>th</sup> year head coach Amanda Rico had another outstanding campaign. The Owls recorded the second best record in school history with a 21-9 mark, just missing a shot at the Region I tournament. Megan Albertson was, for the third time, an All-Cascade Conference selection as well as an All-Region selection.

In cross country, coach Ken Coffman and Megan Czerny had a second straight trek to Louisville, Kentucky to the national finals. An all-conference runner Czerny finished 83<sup>rd</sup> out of 268 runners at the Louisville finale. Three distance stars were selected as All-American Scholar Athletes including Devin Paine, Randy Fox and Chris McLean.

Coach Greg Stewart completed his third year at the reins of the softball team (32-12-1, 12-8) which finished second in the Cascade Conference for 2007. Kelsi Haylett was named the Cascade Conference Player of the Year. She was joined on the All-Cascade squad by Amanda Doherty, Jenni Bittle and Keri Gesner. Haylett, Doherty and Gesner were also selected to the All-Region I squad. Haylett and Kristiann Kinsman were named All-American Scholar Athletes.

Sixth year coach Pete Whisler's club had plenty of new faces in 2007. Tech finished the season with an overall 10-28 record. Chris Curtis was an all-conference selection while Ryan Henry was named an All-American Scholar Athlete.

Completing his 12<sup>th</sup> year as track guru, Ken Coffman's men and women each finished in third place in the conference track meet with Jguwon Hogges named the Male Athlete of the Meet. Tech javelin throwers recorded three All-American awards at the Fresno, California nationals. Kelsey Stolz and Michelle Klaja both won those honors for a second time while on the men's side Steve Carter finished second for A-A status as well. Eight members received All-American Scholar Athlete awards including: Kelsi Haylett, Haley Carlson, Randy Fox, Devin Paine, Amy Sticka and Stolz.

**Table 2.3.4  
OIT STUDENT CLUBS & ORGANIZATIONS**

***Associated Students of OIT (ASOIT)***

***Campus Arts & Entertainment (CA&E)***

***Departmental & Professional***

Associated Students of Civil Engineering (ASCE)  
 American Society of Mechanical Engineers (ASME)  
 Dental Hygiene (SADHA)  
 Diagnostic Medical Sonography (DMS)  
 Health Sciences  
 Institute of Electrical and Electronic Engineering (IEEE)  
 Nuclear Medicine  
 Professional Land Surveyors of Oregon (PLSO)  
 Psychology  
 Radiologic Science Club (SMIS/RDSC)  
 Society of Automotive Engineers (SAE)  
 Society of Manufacturing Engineers (SME)  
 Student Nurses Association (SNA)  
 Society of Women Engineers (SWE)  
 Students in Communication (SIC)  
 Vascular

***Greeks***

Phi Delta Theta Fraternity

***Honoraries***

Lambda Pi Eta  
 Phi Beta Lambda  
 Phi Theta Kappa  
 PSI Chi  
 Tau Alpha Pi

***International and Cultural***

Diversity Center  
 International Club  
 MeChA  
 Native American Student Union (NASU)

***Orientation***

***Publications and Media***

KTEC (campus radio station)  
 OTB (Oregon Technical Broadcasting)  
*The Edge* (campus newspaper)

***Recreational***

Adventum  
 Amateur Radio  
 Ball Room Dance Club  
 Computer Systems Society (CSS)  
 Dance Club  
 FAST  
 GAME  
 Game Developers  
 Gay/Straight Alliance (GSA)  
 Laser Club  
 Mars Reach  
 OTAKU / Anime  
 OTTTC (Table Tennis)

***Outdoor Program (OP)***

Owls for Access  
 Pep Band  
 Rock Climbing Club (RCC)  
 Rugby (Hittin' Hooters)  
 Snowboarding  
 Students for Human Dignity  
 Theater Club  
 Tolarian Refugees  
 Trekkies  
 Zymurgy Club (TZC)

***Religious***

Campus Crusade for Christ  
 Chi Alpha  
 Christian Fellowship

***Residence Hall Association (RHA)***

***Women's Resource Center***

SOURCE: Associated Students of OIT (ASOIT); as of 9/14/2007



**Table 2.3.5  
STUDENT AWARDS  
2006-07**

**President's Senior Cup:** Presented by the faculty to two baccalaureate students, one from each school. Selection is primarily based on demonstrated academic excellence. Recipients of the President's Senior Cup are selected from students named Outstanding Scholars.

*Jenavi lida  
Vascular Technology*

*Benjamin Roberts  
Electronics Engineering Technology*

**Outstanding Scholar:** Consists of students appointed by their department chair or program director who have demonstrated academic excellence in their major.

**Jeanine Joe** (Applied Psychology), **Thomas Slimak** (Civil Engineering), **Nicholas Oberst** (Clinical Laboratory Science), **John Scott Ross** (Communication Studies), **Cody Zuschlag** (Computer Engineering Technology), **Emily Gasser** (Dental Hygiene), **Belinda VanStaden** (Diagnostic Medical Sonography), **Sharon Williams** (Echocardiography-Distance Education), **Benjamin Roberts** (Electronics Engineering Technology), **Cornelius Boghean** (Electronics Engineering Technology - Portland), **Robert Martin** (Geomatics), **Laura Petrovich** (Health Sciences), **Aaron Lang** (Information Technology - Portland), **Courtney Tacchini** (IT: Accounting), **Nathan Landry** (IT: Applications Development), **Minh Tran** (IT: Bus/Systems Analysis), **Kelsey Brain** (Mgmt: Entrepreneurship/Small Business Mgmt), **Daniel Mills** (Mgmt: Marketing), **Jerald Knodel** (Operations Management), **Phillip Kolander-Scott** (Operations Management - Portland), **Andrew Cail** (Manufacturing Engineering Technology), **Thomas Mayor** (Manufacturing Engineering Technology- Boeing), **Grant Braun** (Manufacturing Engineering Technology - Portland), **John Pepper Robinette** (Mechanical Engineering), **Clancy Callahan** (Mechanical Engineering Technology), **Kenneth Chow** (Mechanical Engineering Technology - Portland), **Karl Grotenhuis** (Nuclear Medicine Technology), **Stephanie Schulz** (Nursing), **Nicholas Miller** (Radiologic Science), **April Venes** (Respiratory Care - Distance Education), **Kyle Spencer** (Software Engineering Technology), **Colin McCoy** (Software Engineering Technology -Portland), **Jenavi lida** (Vascular Technology)

**Owens Citizenship Award:** Presented by the faculty to the student who has made outstanding contributions to the University.

*Heath Higgins  
Software Engineering Technology*

*J. Rebecca Barden  
Applied Psychology*

**Most Dedicated Student or Students Award:** Presented by the faculty to the student whose loyalty to the University, involvement in campus and community activities and commitment to high personal standards form a role model for others.

*H. Christine Frazier  
Communication Studies*

**Student Achievement Award:** Presented by the faculty, recognizes an outstanding student project that is judged to have made a significant contribution to the student's area of academic interest.

*Sarah Bryan  
Civil Engineering*

**Outstanding Community Service Award:** Presented by the faculty, recognizes outstanding contributions to OIT and/or the community. This is exemplified by high moral standards, a cooperative attitude with community leaders, and demonstrated service to others.

*Krystal Daibes  
Management: Marketing*

**The Pride of OIT Award:** Awarded upon recommendation of the Student Awards Commission to the student or students whose academic excellence, scholarship, service or other creative endeavors bring outstanding recognition and pride to OIT.

*Civil Engineering Steel Bridge Team  
Members: Sarah Bryan, Quincey Fahlgren,  
Michael Goff, Jared Lowther, Jordan Reimer,  
W. Rian Schlyper, Thomas Slimak,  
Brian VanRooyen  
Advisors: Rober Lindgren, Ken Kellogg*