

FACT BOOK 2007-2008

SECTION 2: STUDENTS

Enrollment (2.1)

Table 2.1.1	Part 1: Enrollment Profile by Location, Fall 2007 Part 2: Headcount and FTE Enrollment by Location and Program/Type of Course, 2005 to 2007
Table 2.1.2	Headcount Distribution by Gender, Fall Terms 2003 to 2007
Table 2.1.3	Enrollment by Residency Status & Fee Policy, 2003 to 2007
Table 2.1.4	Headcount Distribution by Student Level, Fall Terms 2003 to 2007
Table 2.1.5	Full-time/Part-time Headcount, Fall Terms 2003 to 2007
Table 2.1.6	Headcount Distribution by Ethnicity, Fall Terms 2003 to 2007
Table 2.1.7	Enrollment by Major, Ethnicity and Gender, Fall 2007
Table 2.1.7.1	Enrollment by Major and Location, Fall 2007
Table 2.1.8	Enrollment by Major, Fall Terms 2003 to 2007
Table 2.1.9	FTE Enrollment by Student Level, 2007-08
Graph 2.1.9a	Enrollment History, Fall Terms 2002-03 to 2007-08 (bar graph)
Graph 2.1.9b	Enrollment History, Winter Terms 2002-03 to 2007-08 (bar graph)
Graph 2.1.9c	Enrollment History, Spring Terms 2002-03 to 2007-08 (bar graph)
Table 2.1.10	Headcount and FTE by Campus/Location, Fall Terms 1998 to 2007
Table 2.1.11	Credit Hours and Annual FTE by Course Department, 2003-04 to 2007-08
Table 2.1.12	Unduplicated Headcount in Credit Courses, 2002-03 to 2006-07
Table 2.1.13	Distance Education Enrollment Summary, 2007-08

Student Profile (2.2)

Table 2.2.1	Average Age by Student Level and Gender, Fall 2007
Table 2.2.2	Headcount Distribution by Age, Fall Terms 2003 to 2007
Table 2.2.3	Enrollment by Geographic Origin, Fall Terms 2003 to 2007
Table 2.2.4	Students from Oregon by County, Fall 2007
Table 2.2.5	Enrollment by Previous Attendance, 2003 to 2007
Table 2.2.6	Average High School GPA of First-time Freshmen by Gender and Residency, 2002 to 2007
Table 2.2.7	Enrollment of First-time Freshmen by High School GPA and Gender, Fall 2007
Table 2.2.8	Enrollment of First-time Freshmen by High School GPA and Residency, Fall 2007
Table 2.2.9	First-time Freshmen SAT Test Score Statistics, Fall 2007

FACT BOOK 2007-2008

SECTION 2: STUDENTS (continued)

Table 2.2.10	Admissions Summary, Fall 2007
Table 2.2.11	Grade Distribution by Department, Fall 2007
Table 2.2.12	Overall Grade Distribution, 2003 to 2007
Table 2.2.13	Part 1: Degrees Awarded by Major, 2003-04 to 2007-08 Part 2: Minors Awarded Since Inception, 1998-99 through 2007-08
Table 2.2.14	Degrees Awarded by Ethnicity and Gender, 2007-08
Table 2.2.15	Freshman Enrollment from Major Feeder Areas, Fall 2006 and Fall 2007

Student Activities and Achievements (2.3)

Table 2.3.1	Owls Compete in NAIA
Table 2.3.2	Intercollegiate Athletics 2008-09
Table 2.3.3	Athletic Achievements 2007-08
Table 2.3.4	OIT Student Clubs and Organizations
Table 2.3.5	Student Awards, 2007-08

Table 2.1.1 (Part 1)
Enrollment Profile by Location*
Fall 2007 -- 4th Week

Category	Fall 2007				Fall 2006	Fall 2007 Compared to Fall 2006	
	Klamath Campus**	Portland Operations***	Other****	Total		#	%
Total Headcount Enrollment	2,104	354	860	3,318	3,157	161	5.1%
Gender							
Male	1,080	285	308	1,673	1,622	51	3.1%
Female	1,024	69	552	1,645	1,535	110	7.2%
Ethnicity							
Amer. Indian/Alaska Native	44	6	13	63	60	3	5.0%
Asian/Pacific Islander	108	35	45	188	171	17	9.9%
Black/African American	8	6	17	31	36	-5	-13.9%
Hispanic	95	13	45	153	128	25	19.5%
White, Non-Hispanic	1,665	241	655	2,561	2,481	80	3.2%
International Student	11	6	3	20	27	-7	-25.9%
Unknown	173	47	82	302	254	48	18.9%
Student Level							
Freshman	452	16	6	474	541	-67	-12.4%
Sophomore	380	36	31	447	368	79	21.5%
Junior	423	60	48	531	514	17	3.3%
Senior	612	146	241	999	959	40	4.2%
Post-baccalaureate	73	62	22	157	155	2	1.3%
Non-admitted UG	161	30	506	697	608	89	14.6%
Graduate Master's	3	4	6	13	12	1	8.3%
Residency							
Resident	1,811	296	553	2,660	2,585	75	2.9%
Non-resident	293	58	307	658	572	86	15.0%
Geographic Source							
Klamath/Lake Counties	705	7	246	958	932	26	2.8%
Other Oregon Counties	1,081	297	313	1,691	1,629	62	3.8%
Other States	310	49	301	660	584	76	13.0%
Foreign Countries	8	1	-	9	12	-3	-25.0%
Full-/Part-Time							
Full-time	1,613	132	104	1,849	1,814	35	1.9%
Part-time	491	222	756	1,469	1,343	126	9.4%
Age							
Mean	24.9	32.2	27.1	26.3	26.6	-0.3	
Median	22.0	30.4	18.5	22.5	22.7	-0.2	
Mode	21	28	17	17	18	-1	

* Based primarily on course location. There are a few exceptions when a student's major is used to determine location (Renewable Energy Systems, Respiratory Care, and degree completion programs). A student is counted only once even if enrolled at more than one location, and is reported under Klamath if enrolled in at least one Klamath class.

** In addition to traditional on-campus courses, Klamath Campus includes High School Transition program, remedial, KCC, externship, field experience, and continuing education classes.

*** Portland Operations includes Portland East/West campuses, OHSU Joint Programs, and Renewable Energy Systems.

**** Other includes Boeing, Dental Hygiene (LaGrande), high school Advanced College Placement (statewide), Respiratory Care (Rogue CC), and Klamath degree completion programs.

NOTE: There may be some minor headcount discrepancies when reporting majors by location (e.g., Pre-Dental Hygiene and Computer Engineering Technology reported under Other). Since enrollment files are frozen at a point in time, major, rate codes, student initiated course changes, and other Banner SIS data used to determine location may not always be synchronized at the report's census date.

SOURCE: Student Extract and SCARF/IR and REG Tables

Table 2.1.1 (Part 2)
Headcount* and FTE Enrollment by Location and Program/Type of Course
2005 to 2007 (Fall Terms)

Location/Program	Fall	Fall	Fall	2007 Compared to 2006	
	2005	2006	2007	Number	Percent
Total Headcount Enrollment**	3,351	3,157	3,318	161	5.1%
Klamath	2,251	2,090	2,104	14	0.7%
Regular/Traditional Classes	1,962	1,854	1,939	85	4.6%
High School Transition	30	25	28	3	12.0%
Remedial Courses	0	0	0	0	--
KCC	74	53	2	-51	-96.2%
Other Continuing Education	132	122	107	-15	-12.3%
OHSU Nursing	53	36	28	-8	-22.2%
Portland Operations	392	363	354	-9	-2.5%
Portland East/West	296	292	282	-10	-3.4%
OHSU Joint Programs	96	71	72	1	1.4%
Other	708	704	860	156	22.2%
Boeing	103	90	100	10	11.1%
Degree Completion/Online	125	177	235	58	32.8%
Dental Hygiene at LaGrande	27	52	53	1	1.9%
High School ACP (KF & Other)	406	341	433	92	27.0%
Respiratory Care at Rogue CC	47	44	39	-5	-11.4%
Total FTE Enrollment***	2,315.5	2,212.3	2,267.4	55.1	2.5%
Klamath	1,876.9	1,780.5	1,809.1	28.6	1.6%
Regular/Traditional Classes	1,702.9	1,615.3	1,611.1	-4.2	-0.3%
High School Transition	8.5	8.7	8.7	0.0	0.0%
Remedial Courses	13.1	8.8	13.6	4.8	54.5%
KCC	18.9	14.4	13.9	-0.5	-3.5%
Other Continuing Educ.	133.5	133.3	161.8	28.5	21.4%
OHSU Nursing	0.0	0.0	0.0	0.0	--
Portland Operations	211.3	206.3	219.0	12.7	6.2%
Portland East/West	120.5	123.4	135.6	12.2	9.9%
OHSU Joint Programs	90.8	82.9	83.4	0.5	0.6%
Other	227.3	225.5	239.3	13.8	6.1%
Boeing	42.1	38.0	36.7	-1.3	-3.4%
Degree Completion	0.0	0.0	0.0	0.0	--
Dental Hygiene at LaGrande	26.0	54.1	49.1	-5.0	-9.2%
High School ACP (KF & Other)	105.7	83.1	107.7	24.6	29.6%
Respiratory Care at Rogue CC	53.5	50.3	45.8	-4.5	-8.9%

* Under Headcount Enrollment, a student is counted only once even if enrolled in two different types of courses.

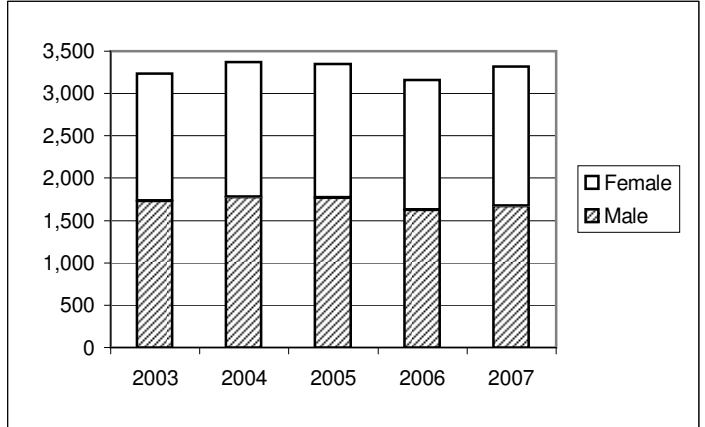
** Headcount - Location and program are primarily based on course information. Beginning Fall 2006, the exceptions are Renewable Energy Systems, Respiratory Care-Rogue CC, and Degree Completion which are based on students' majors. Fall 2005 figures have been revised to reflect this new methodology. [Note: Fall 2004 data have not been revised; differences, if any, are minimal.]

*** FTE - FTE is assigned to the location/program of the course rather than the student. Fall 2005 figures have been adjusted to reflect the following change in methodology: Degree Completion is no longer listed as a separate category when reporting FTE by location. It is now included under KF/Other Continuing Educ. or Respiratory Care depending on the course prefix. [Note: Fall 2004 FTE figures have not been revised.]

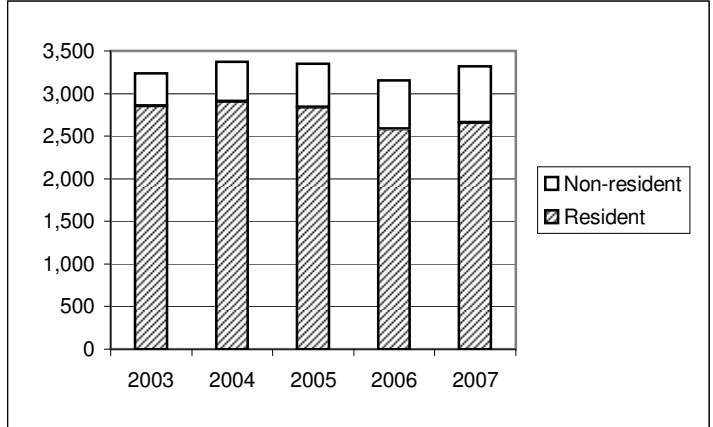
SOURCE: Student Extract and SCARF tables (4th Week)

**Table 2.1.2
Headcount Distribution By
Gender, Residency and Enrollment Status
Fall Terms 2003 to 2007**

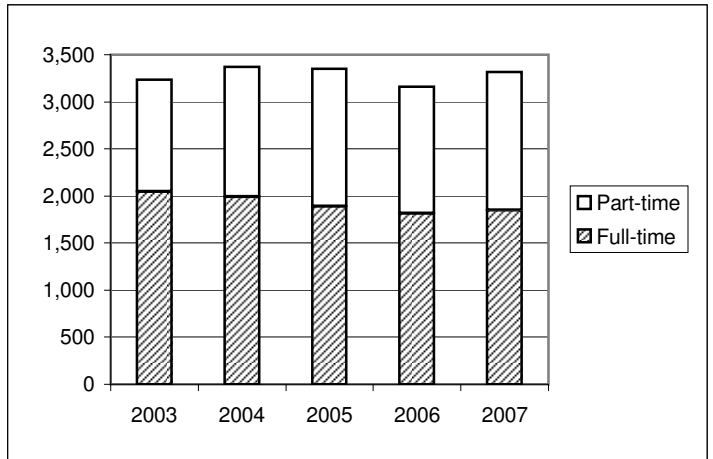
Gender	2003	2004	2005	2006	2007
Male	1,733	1,779	1,769	1,622	1,673
Female	1,503	1,594	1,582	1,535	1,645
TOTAL	3,236	3,373	3,351	3,157	3,318
% Male	54%	53%	53%	51%	50%
% Female	46%	47%	47%	49%	50%



Residency	2003	2004	2005	2006	2007
Resident	2,852	2,906	2,842	2,585	2,660
Non-resident	384	467	509	572	658
TOTAL	3,236	3,373	3,351	3,157	3,318
% Resident	88%	86%	85%	82%	80%
% Non-resident	12%	14%	15%	18%	20%



Enrollment Status	2003	2004	2005	2006	2007
Full-time	2,047	1,990	1,887	1,814	1,849
Part-time	1,189	1,383	1,464	1,343	1,469
TOTAL	3,236	3,373	3,351	3,157	3,318
% Full-time	63%	59%	56%	57%	56%
% Part-time	37%	41%	44%	43%	44%



SOURCE: Student Extract, Fall Terms -- 4th Week

**Table 2.1.3
ENROLLMENT BY RESIDENCY STATUS & FEE POLICY*
2003 to 2007 (Fall Terms, 4th Week)**

Based on Residency Status*	Resident		Non-Resident		Total	
	Number	Percent	Number	Percent	Number	Percent
Fall 2003						
Undergraduate	2,852	88.16%	383	11.84%	3,235	100.00%
Graduate	0	0.00%	1	100.00%	1	100.00%
Total	2,852	88.13%	384	11.87%	3,236	100.00%
Fall 2004						
Undergraduate	2,900	86.16%	466	13.84%	3,366	100.00%
Graduate	6	85.71%	1	14.29%	7	100.00%
Total	2,906	86.15%	467	13.85%	3,373	100.00%
Fall 2005						
Undergraduate	2,834	85.00%	500	15.00%	3,334	100.00%
Graduate	8	47.06%	9	52.94%	17	100.00%
Total	2,842	84.81%	509	15.19%	3,351	100.00%
Fall 2006						
Undergraduate	2,583	82.13%	562	17.87%	3,145	100.00%
Graduate	2	16.67%	10	83.33%	12	100.00%
Total	2,585	81.88%	572	18.12%	3,157	100.00%
Fall 2007						
Undergraduate	2,654	80.30%	651	19.70%	3,305	100.00%
Graduate	6	46.15%	7	53.85%	13	100.00%
Total	2,660	80.17%	658	19.83%	3,318	100.00%

Based on Fee Policy*	Resident & Other Fee Policies**		Non-Resident		Total	
	Number	Percent	Number	Percent	Number	Percent
Fall 2003						
Undergraduate	3,088	95.46%	147	4.54%	3,235	100.00%
Graduate	1	100.00%	0	0.00%	1	100.00%
Total	3,089	95.46%	147	4.54%	3,236	100.00%
Fall 2004						
Undergraduate	3,211	95.40%	155	4.60%	3,366	100.00%
Graduate	7	100.00%	0	0.00%	7	100.00%
Total	3,218	95.40%	155	4.60%	3,373	100.00%
Fall 2005						
Undergraduate	3,189	95.65%	145	4.35%	3,334	100.00%
Graduate	17	100.00%	0	0.00%	17	100.00%
Total	3,206	95.67%	145	4.33%	3,351	100.00%
Fall 2006						
Undergraduate	2,980	94.75%	165	5.25%	3,145	100.00%
Graduate	12	100.00%	0	0.00%	12	100.00%
Total	2,992	94.77%	165	5.23%	3,157	100.00%
Fall 2007						
Undergraduate	3,111	94.13%	194	5.87%	3,305	100.00%
Graduate	12	92.31%	1	7.69%	13	100.00%
Total	3,123	94.12%	195	5.88%	3,318	100.00%

* Residency Status identifies whether or not a student has established Oregon residency. Fee Policy is the type of tuition a student is assessed. A non-resident may not always pay non-resident tuition.

** Includes non-resident students enrolled for less than 9 state support credits (Part-time Fee Policy) and those assessed resident tuition. Students reported in this category may not always be Oregon residents.

SOURCES: Data based on residency status - Student Extract

Data based on fee policy - OUS Institutional Research Services (Enrollment Report ERTE-01 Part 1)

Table 2.1.4
HEADCOUNT DISTRIBUTION BY STUDENT LEVEL
Fall Terms 2003 to 2007

<i>Student Level</i>	<i>2003</i>	<i>2004</i>	<i>2005</i>	<i>2006</i>	<i>2007</i>
Freshman	751	614	566	541	474
Sophomore	468	511	480	368	447
Junior	517	546	490	514	531
Senior	807	878	914	959	999
Post-Bac/Non-Graduate	99	114	129	155	157
Non-Admit Undergraduate	593	703	755	608	697
Master's	1	7	17	12	13
TOTAL	3,236	3,373	3,351	3,157	3,318

* The timing of transfer credit evaluation can impact undergraduate student level counts. Admitted students whose transfer credits have not been evaluated and accepted by OIT are considered freshman. If transfer evaluations are completed prior to 4th week, higher counts in the sophomore, junior, and senior levels and lower freshman headcount will result.

SOURCE: Student Extract (4th Week)

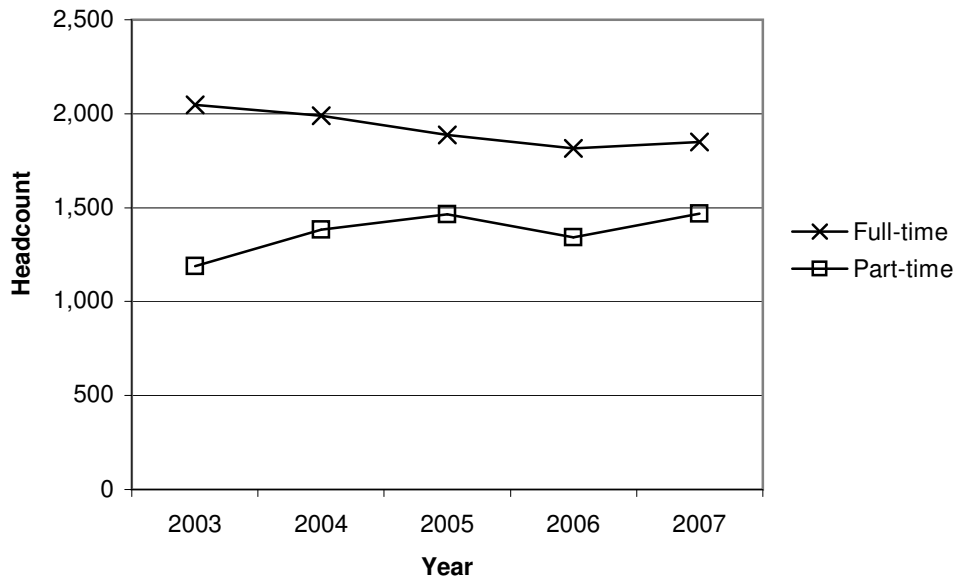
**Table 2.1.5
FULL-TIME/PART-TIME HEADCOUNT
Fall Terms 2003 to 2007**

	<i>2003</i>	<i>2004</i>	<i>2005</i>	<i>2006</i>	<i>2007</i>
Full-time*	2,047	1,990	1,887	1,814	1,849
Men	1,141	1,107	1,023	972	986
Women	906	883	864	842	863
Part-time**	1,189	1,383	1,464	1,343	1,469
Men	592	672	746	650	687
Women	597	711	718	693	782
TOTAL	3,236	3,373	3,351	3,157	3,318

* Undergraduates 12 or more hours; graduates 9 or more hours.

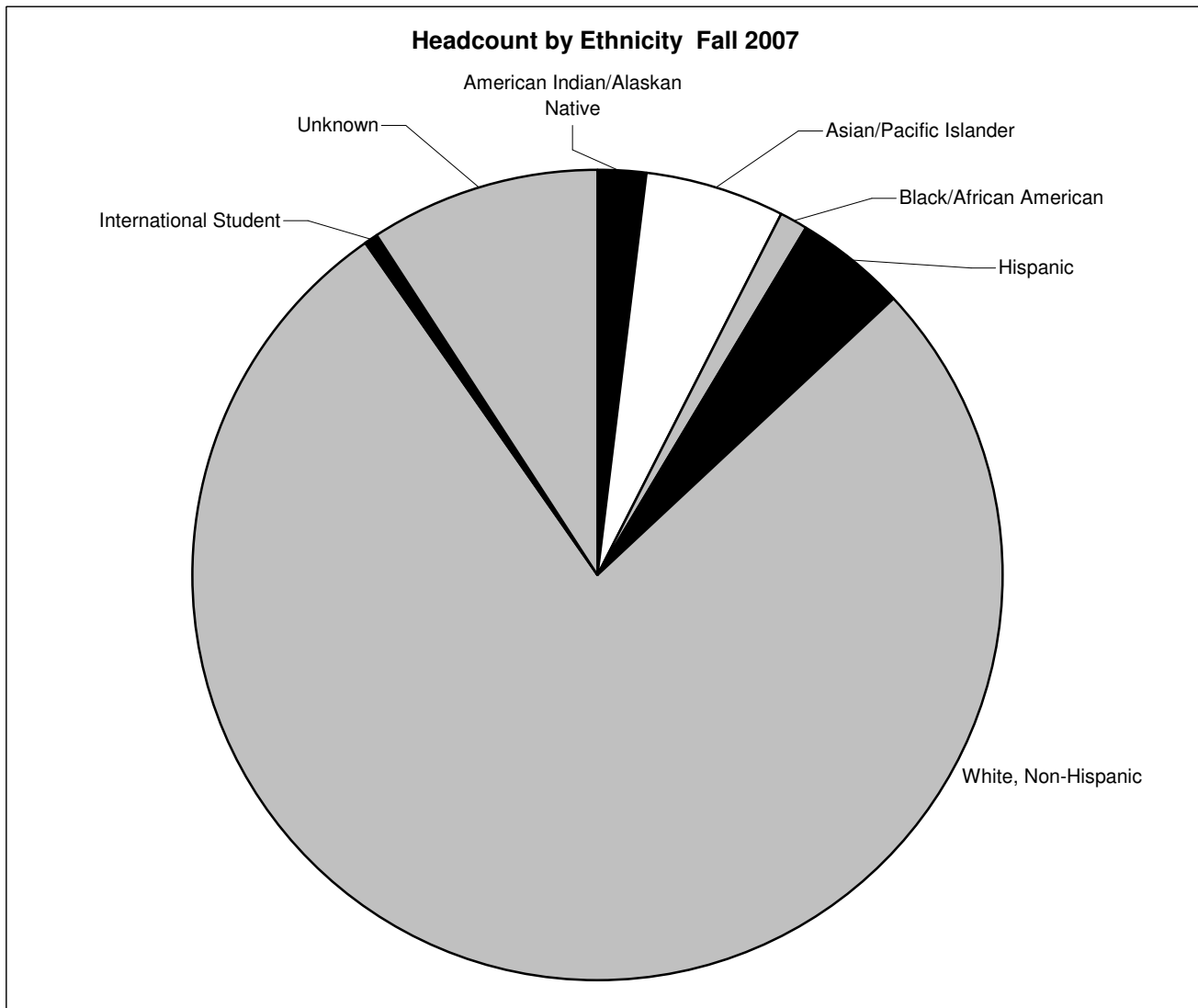
** Undergraduates 0-11 hours; graduates 0-8 hours.

SOURCE: Student Extract (4th Week)



**Table 2.1.6
HEADCOUNT DISTRIBUTION BY ETHNICITY
Fall Terms 2003 to 2007**

<i>Ethnicity</i>	<i>2003</i>	<i>2004</i>	<i>2005</i>	<i>2006</i>	<i>2007</i>
American Indian/Alaskan Native	54	57	63	60	63
Asian/Pacific Islander	152	164	174	171	188
Black/African American	32	35	36	36	31
Hispanic	146	134	135	128	153
White, Non-Hispanic	2,598	2,710	2,639	2,481	2,561
International Student	26	22	30	27	20
Unknown	228	251	274	254	302
TOTAL	3,236	3,373	3,351	3,157	3,318



SOURCE: Student Extract (4th Week)

Table 2.1.7 - ENROLLMENT BY MAJOR, ETHNICITY, AND GENDER -- FALL 2007

Major	American Indian/ Alaska Native		Asian/Pacific Islander		Black/African American		Hispanic		White Non-Hispanic		International Student		Unknown		TOTALS		
	M	F	M	F	M	F	M	F	M	F	M	F	M	F	M	F	ALL
Engineering:	15	1	62	5	6	1	28	5	683	57	9	-	82	7	885	76	961
Civil Engineering	4	1	3	-	1	-	3	1	80	19	-	-	4	1	95	22	117
Geomatics	-	-	2	-	-	-	2	-	47	5	-	-	8	1	59	6	65
Manufacturing Engr Tech	1	-	18	2	2	1	4	-	72	13	-	-	8	3	105	19	124
Manufacturing Engr Tech (Master's)	-	-	1	-	-	-	1	-	11	-	1	-	-	-	14	-	14
Mechanical Engineering	1	-	4	-	-	-	1	-	52	2	1	-	6	-	65	2	67
Mechanical Engr Tech	3	-	7	-	2	-	6	1	99	2	2	-	8	2	127	5	132
Computer Engr Tech	-	-	6	-	-	-	4	-	86	2	1	-	10	-	107	2	109
Embedded Systems Engr Tech	-	-	1	-	-	-	-	-	2	-	-	-	-	-	3	-	3
Software Engr Tech	6	-	11	1	-	-	1	1	113	4	3	-	15	-	149	6	155
Electrical Engineering	-	-	1	1	-	-	1	-	26	-	-	-	7	-	35	1	36
Electronics Engr Tech	-	-	6	1	1	-	4	1	49	3	1	-	6	-	67	5	72
Renewable Energy Systems	-	-	2	-	-	-	1	1	46	7	-	-	10	-	59	8	67
Management:	5	1	13	5	4	-	9	6	119	73	2	1	17	9	169	95	264
IT Appl Development (includes IT)	-	1	6	1	1	-	2	3	32	4	1	-	4	-	46	9	55
IT Appl Development Online	-	-	1	-	1	-	-	-	2	1	-	-	2	-	6	1	7
IT Bus/Systems Analysis (incl MIS)	1	-	3	1	2	-	1	-	22	7	-	-	4	2	33	10	43
IT Accounting (incl MIS:Mgmt Actg)	-	-	1	-	-	-	1	-	4	2	-	-	-	-	6	2	8
Health Informatics	-	-	-	-	-	-	-	-	1	1	-	-	-	-	1	1	2
Mgmt: Accounting	-	-	-	1	-	-	-	2	6	20	-	1	2	2	8	26	34
Mgmt: Marketing	1	-	-	-	-	-	2	-	12	13	-	-	1	3	16	16	32
Mgmt: Small Business	2	-	-	2	-	-	2	1	24	20	1	-	2	1	31	24	55
Office Systems Tech	-	-	-	-	-	-	-	-	-	1	-	-	-	-	-	1	1
Operations Management	1	-	2	-	-	-	1	-	16	4	-	-	2	1	22	5	27
Health Technologies:	8	12	21	53	7	10	17	34	198	767	1	5	23	70	275	951	1,226
Clinical Lab Science	1	-	-	5	-	1	-	1	6	27	-	1	2	5	9	40	49
Pre-Dental Hygiene	1	1	1	3	-	-	1	2	1	30	-	-	1	7	5	43	48
Dental Hygiene	-	2	-	5	-	-	-	4	3	60	-	-	1	4	4	75	79
Dental Hygiene (Joint EOU)	-	-	-	6	-	1	-	-	-	44	-	-	-	1	-	52	52
Dental Hygiene Outreach	-	-	-	2	-	1	-	2	2	45	-	-	-	8	2	58	60
Echocardiography (Outreach)	-	-	1	2	2	3	1	1	14	53	-	1	1	5	19	65	84
Health Sciences	1	1	2	2	-	-	1	4	8	29	-	-	-	1	12	37	49
Pre-Medical Imaging	1	2	2	6	-	1	4	8	38	117	1	-	3	10	49	144	193
Radiologic Science (RDSC)	-	-	-	2	1	1	1	-	3	63	-	-	1	5	6	71	77
RDSC Outreach	-	-	1	3	-	-	-	3	23	20	-	-	-	1	24	27	51
Nuclear Medicine Technology	3	2	6	6	1	-	1	2	46	67	-	-	2	8	59	85	144
Diagnostic Medical Sonography	1	-	-	2	3	1	1	1	6	13	-	1	-	-	11	18	29
Vascular Technology	-	1	4	5	-	-	-	1	14	48	-	1	3	6	21	62	83
Vascular Technology Outreach	-	-	-	2	-	1	1	1	2	32	-	-	-	1	3	37	40
Pre-Nursing	-	1	-	1	-	-	3	1	3	44	-	-	-	3	6	50	56
Nursing	-	2	-	-	-	-	1	1	8	36	-	-	-	3	9	42	51
Paramedic Education	-	-	2	-	-	-	1	-	9	2	-	-	8	1	20	3	23
Pre-Respiratory Care	-	-	1	-	-	-	-	-	-	3	-	-	-	-	1	3	4
Respiratory Care	-	-	1	1	-	-	1	2	10	23	-	-	-	1	12	27	39
Respiratory Care Outreach	-	-	-	-	-	-	-	-	2	11	-	1	1	-	3	12	15
Arts and Sciences:	10	11	8	21	1	2	21	33	262	402	1	1	41	53	344	523	867
Applied Mathematics	1	-	-	-	-	-	-	-	4	3	-	-	1	-	6	3	9
Applied Psychology	1	2	-	2	1	-	1	6	27	78	1	1	1	6	32	95	127
Associate of Arts	-	-	-	-	-	-	-	1	1	-	-	-	-	-	1	1	2
Biology	-	-	2	2	-	-	2	1	12	17	-	-	1	3	17	23	40
Communication Studies	1	-	1	-	-	-	-	1	21	17	-	-	1	2	24	20	44
Environmental Sciences	-	-	-	-	-	-	1	-	10	4	-	-	1	1	12	5	17
General Studies	7	9	5	17	-	2	17	24	187	283	-	-	36	41	252	376	628
TOTALS	38	25	104	84	18	13	75	78	1,262	1,299	13	7	163	139	1,673	1,645	3,318

SOURCE: Student Extract

**Table 2.1.7.1
Enrollment by Major and Location*
Fall 2007 -- 4th Week**

Major	Fall 2007				Fall 2006	Fall 2007 Compared to Fall 2006	
	Klamath	Portland Operations**	Other***	Total		#	%
<i>SCHOOL OF ENGINEERING, TECHNOLOGY, AND MANAGEMENT</i>							
Engineering:	637	231	93	961	910	51	5.6%
Civil Engineering	117	-	-	117	109	8	7.3%
Geomatics	65	-	-	65	46	19	41.3%
Manufacturing Engineering Tech	19	24	81	124	122	2	1.6%
Manufacturing Engr. Tech (Master's)	3	4	7	14	12	2	16.7%
Mechanical Engineering	66	-	1	67	17	50	294.1%
Mechanical Engineering Tech	89	40	3	132	189	-57	-30.2%
Computer Engineering Tech	108	-	1 *	109	99	10	10.1%
Embedded Systems Engineering Tech	3	-	-	3	-	3	****
Software Engineering Tech	102	53	-	155	175	-20	-11.4%
Electrical Engineering	36	-	-	36	-	36	****
Electronics Engineering Tech	20	52	-	72	89	-17	-19.1%
Renewable Energy Systems	9	58	-	67	52	15	28.8%
Management:	211	46	7	264	278	-14	-5.0%
IT Appl Development (includes IT)	35	20	-	55	73	-18	-24.7%
IT Appl Development Online	-	-	7	7	6	1	16.7%
IT Bus/Systems Analysis (includes MIS)	31	12	-	43	51	-8	-15.7%
IT Accounting (includes MIS:Mgmt Actg)	8	-	-	8	11	-3	-27.3%
IT Health Informatics	-	2	-	2	-	2	****
Mgmt: Accounting	34	-	-	34	30	4	13.3%
Mgmt: Marketing	32	-	-	32	29	3	10.3%
Mgmt: Small Business	53	2	-	55	47	8	17.0%
Office Systems Tech.	1	-	-	1	2	-1	-50.0%
Operations Management	17	10	-	27	29	-2	-6.9%
<i>SCHOOL OF HEALTH, ARTS AND SCIENCES</i>							
Health Technologies:	834	72	320	1,226	1,221	5	0.4%
Clinical Lab Science	-	49	-	49	48	1	2.1%
Pre-Dental Hygiene	47	-	1 *	48	47	1	2.1%
Dental Hygiene	79	-	-	79	81	-2	-2.5%
Dental Hygiene (Joint EOU)	-	-	52	52	51	1	2.0%
Dental Hygiene Outreach	-	-	60	60	29	31	106.9%
Echocardiography (Outreach)	-	-	84	84	63	21	33.3%
Health Sciences	49	-	-	49	82	-33	-40.2%
Pre-Medical Imaging	193	-	-	193	225	-32	-14.2%
Diagnostic Medical Sonography	77	-	-	77	70	7	10.0%
Nuclear Medicine Technology	51	-	-	51	54	-3	-5.6%
Radiologic Science (RDSC)	144	-	-	144	143	1	0.7%
RDSC Outreach	-	-	29	29	25	4	16.0%
Vascular Technology	83	-	-	83	82	1	1.2%
Vascular Technology Outreach	-	-	40	40	41	-1	-2.4%
Pre-Nursing	56	-	-	56	55	1	1.8%
Nursing	51	-	-	51	45	6	13.3%
Paramedic Education	-	23	-	23	21	2	9.5%
Pre-Respiratory Care	4	-	-	4	2	2	100.0%
Respiratory Care	-	-	39	39	44	-5	-11.4%
Respiratory Care Outreach	-	-	15	15	13	2	15.4%
Arts and Sciences:	422	5	440	867	748	119	15.9%
Applied Mathematics	9	-	-	9	7	2	28.6%
Applied Psychology	127	-	-	127	125	2	1.6%
Associate of Arts	2	-	-	2	4	-2	-50.0%
Biology	40	-	-	40	-	40	****
Communication Studies	44	-	-	44	48	-4	-8.3%
Environmental Sciences	17	-	-	17	20	-3	-15.0%
General Studies	183	5	440	628	544	84	15.4%
TOTALS	2,104	354	860	3,318	3,157	161	5.1%

* Based on course location.

** Portland Operations includes Portland East and West campuses, OHSU Joint Programs, and Renewable Energy Systems.

*** Other includes Boeing, Dental Hygiene-LaGrande, high school Advanced College Placement (statewide), Respiratory Care at Rogue CC, and Klamath degree completion programs.

**** Enrollment not reported in this major the previous year.

SOURCE: Student Extract and SCARF/IR Table

**Table 2.1.8
ENROLLMENT BY MAJOR
Fall Terms 2002 to 2007**

<i>Major</i>	<i>2002</i>	<i>2003</i>	<i>2004</i>	<i>2005</i>	<i>2006</i>	<i>2007</i>
<i>SCHOOL OF ENGINEERING, TECHNOLOGY, AND MANAGEMENT</i>						
Engineering:	1,058	1,016	1,005	965	910	961
Civil Engineering	101	113	118	115	109	117
Geomatics	47	45	45	50	46	65
Manufacturing Engineering Tech	117	119	145	147	122	124
Manufacturing Engineering Tech (Master's)	-	-	7	17	12	14
Mechanical Engineering	-	-	-	-	17	67
Mechanical Engineering Tech	167	190	196	204	189	132
Computer Engineering Tech	217	192	173	129	99	109
Embedded Systems Engineering Tech	3	-	-	-	-	3
Software Engineering Tech	262	240	222	191	175	155
Electrical Engineering	123	-	-	-	-	36
Electronics Engineering Tech	21	117	99	102	89	72
Renewable Energy Systems	-	-	-	10	52	67
Management:	394	381	377	321	278	264
IT Applications Development (includes IT)	110	90	87	76	73	55
IT Applications Development Online	-	-	-	-	6	7
IT Business/Systems Analysis (includes MIS)	79	95	95	60	51	43
IT Accounting (includes MIS:Mgmt Actg)	17	19	12	5	11	8
IT Health Informatics	39	-	-	-	-	2
Mgmt: Accounting	42	37	40	32	30	34
Mgmt: Marketing	45	48	38	34	29	32
Mgmt: Small Business	28	53	67	65	47	55
Office Systems Tech	34	9	8	6	2	1
Operations Management	-	30	30	43	29	27
<i>SCHOOL OF HEALTH, ARTS AND SCIENCES</i>						
Health:	769	917	1,078	1,155	1,221	1,226
Clinical Lab Science (includes Pre-CLS in 2002)	45	45	45	46	48	49
Pre-Dental Hygiene	41	47	57	63	47	48
Dental Hygiene	54	50	55	81	81	79
Dental Hygiene (Joint EOU)	-	-	-	26	51	52
Dental Hygiene Outreach	9	7	15	15	29	60
Echocardiography (Outreach)	-	10	29	50	63	84
Health Sciences	71	87	81	68	82	49
Pre-Medical Imaging	132	202	262	191	225	193
Diagnostic Medical Sonography	95	63	68	68	70	77
Nuclear Medicine Technology	8	63	59	57	54	51
Radiologic Science (RDSC)	39	105	115	132	143	144
RDSC: Outreach	64	8	8	16	25	29
Vascular Technology	60	69	86	89	82	83
Vascular Technology Outreach	17	30	33	33	41	40
Pre-Nursing	73	67	74	82	55	56
Nursing	37	31	41	53	45	51
Paramedic Education	24	33	23	23	21	23
Pre-Respiratory Care	-	-	-	4	2	4
Respiratory Care	-	-	26	47	44	39
Respiratory Care Outreach	-	-	1	11	13	15
Arts and Sciences:	918	918	912	910	748	867
Applied Mathematics	-	-	-	-	7	9
Applied Psychology	195	174	148	151	125	127
Associate of Arts	15	10	13	12	4	2
Biology	-	-	-	-	-	40
Communication Studies	46	56	65	62	48	44
Environmental Sciences	44	31	30	23	20	17
General Studies	618	647	656	662	544	628
TOTAL	3,139	3,232	3,372	3,351	3,157	3,318

SOURCE: Table 2.1.7

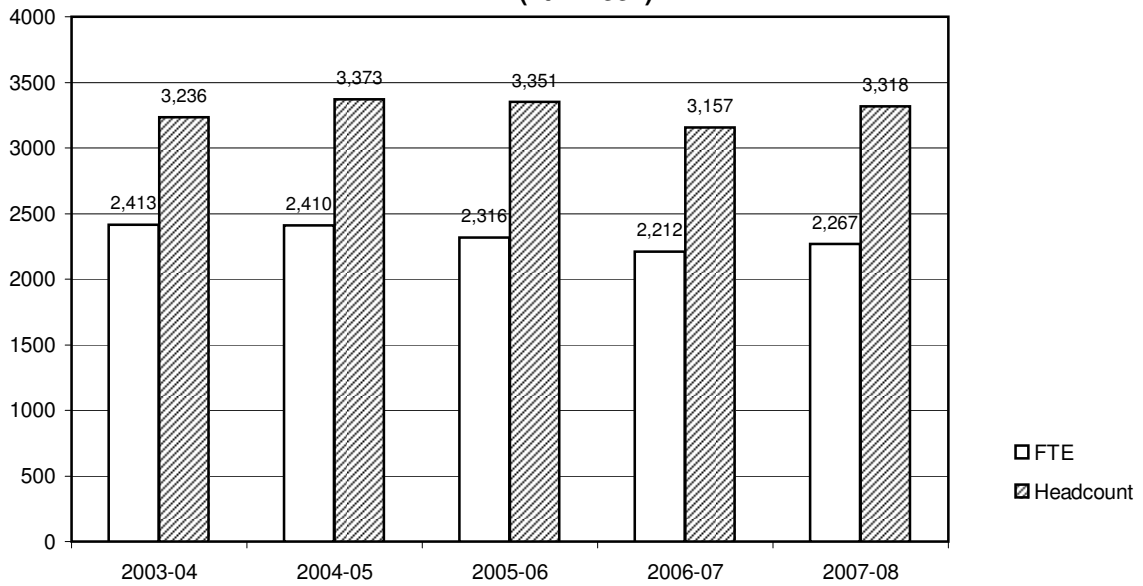
Table 2.1.9
FTE ENROLLMENT BY STUDENT LEVEL
2007-08 (Fall, Winter, Spring Terms - 4th Week)

<i>Student Level</i>	<i>Total Student Credit Hours</i>	<i>Student FTE*</i>	<i>Student Headcount</i>	<i>Average Carrying Load</i>
Fall Term	33,992	2267.4	3,318	--
Freshman	6,065	404.3	474	12.8
Sophomore	5,853	390.2	447	13.1
Junior	6,590	439.3	531	12.4
Senior	11,218	747.9	999	11.2
Post-bac/Non-graduate	1,593	106.2	157	10.1
<i>Admitted Undergraduate Total</i>	<i>31,319</i>	<i>2087.9</i>	<i>2,608</i>	<i>12.0</i>
Non-admitted Undergraduate	2,596	173.1	697	3.7
Master's	77	6.4	13	5.9
Winter Term	32,662	2178.5	3,140	--
Freshman	4,459	297.3	346	12.9
Sophomore	5,471	364.7	429	12.8
Junior	6,592	439.5	536	12.3
Senior	12,485	832.3	1,083	11.5
Post-bac/Non-graduate	1,423	94.9	140	10.2
<i>Admitted Undergraduate Total</i>	<i>30,430</i>	<i>2028.7</i>	<i>2,534</i>	<i>12.0</i>
Non-admitted Undergraduate	2,173	144.9	594	3.7
Master's	50	4.2	10	5.0
Non-admitted Graduate	9	0.8	2	4.5
Spring Term	30,619	2042.8	3,032	--
Freshman	3,116	207.7	248	12.6
Sophomore	4,602	306.8	374	12.3
Junior	5,897	393.1	501	11.8
Senior	13,325	888.3	1,140	11.7
Post-bac/Non-graduate	1,392	92.8	146	9.5
<i>Admitted Undergraduate Total</i>	<i>28,332</i>	<i>1888.8</i>	<i>2,409</i>	<i>11.8</i>
Non-admitted Undergraduate	2,196	146.4	609	3.6
Master's	82	6.8	12	6.8
Non-admitted Graduate	9	0.8	2	4.5

* FTE calculation: All undergraduates - total credit hours divided by 15; master's students - total credit hours divided by 12.

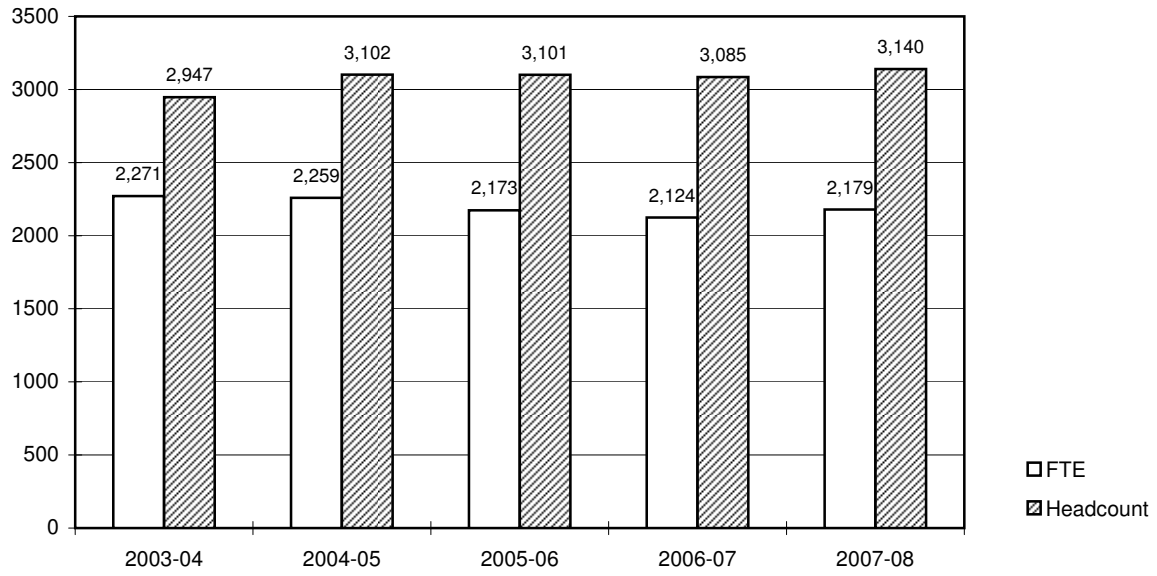
SOURCE: SCARF Enrollment Report (ER-01)

Graph 2.1.9a
ENROLLMENT HISTORY
Fall Terms 2003-04 to 2007-08
(4th Week)



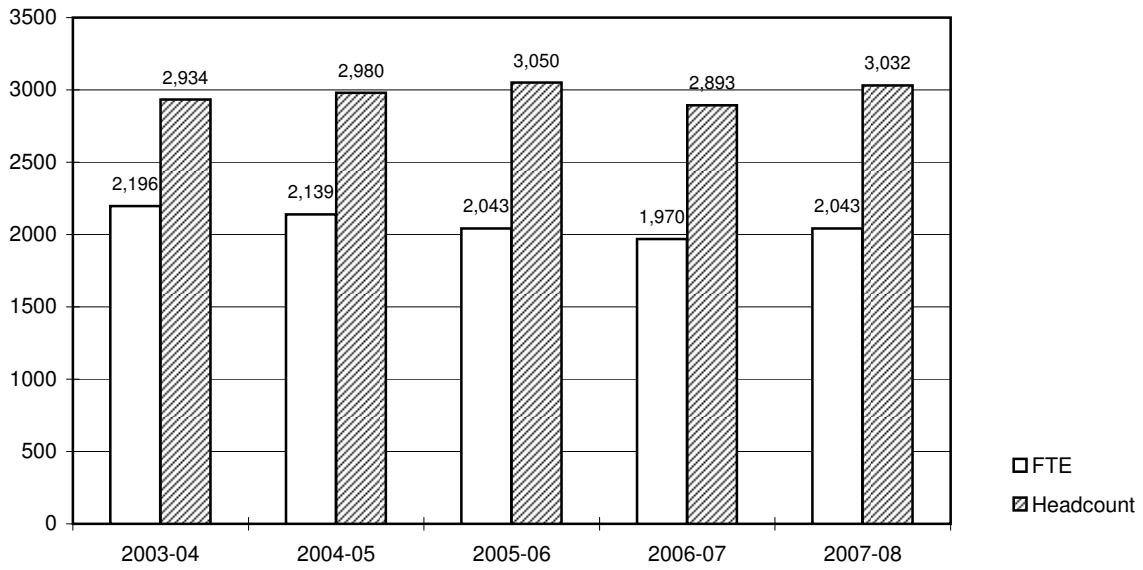
SOURCE: 2003-04 to 2004-05 - SCARF FTE Enrollment Analysis; 2005-06 - Student Extract; 2006-07 - SCARF report ER-01

Graph 2.1.9b
ENROLLMENT HISTORY
Winter Terms 2003-04 to 2007-08 (4th Week)



SOURCES: 2003-04 to 2004-05 - SCARF FTE Enrollment Analysis; 2005-06 and forward - SCARF Report ER-01

Graph 2.1.9c
ENROLLMENT HISTORY
Spring Terms 2003-04 to 2007-08 (4th Week)



SOURCES: 2003-04 to 2004-05 - SCARF FTE Enrollment Analysis; 2005-06 and forward - SCARF Report ER-01

Table 2.1.10
HEADCOUNT AND FTE BY CAMPUS/LOCATION*
Fall Terms 1998 to 2007 (4th Week)

<i>Fall Term</i>	<i>Klamath**</i>		<i>Portland**</i>		<i>Other**</i>		<i>Total</i>	
	<i>Headcount</i>	<i>FTE</i>	<i>Headcount</i>	<i>FTE</i>	<i>Headcount</i>	<i>FTE</i>	<i>Headcount</i>	<i>FTE</i>
1998***	2,367	1,901	312	118			2,679	2,019
1999	2,537	2,021	277	103			2,814	2,124
2000	2,512	2,027	330	124			2,842	2,151
2001	2,795	2,237	293	120			3,088	2,357
2002	2,843	2,260	296	120			3,139	2,380
2002	2,374	2,035.5	415	235.1	350	109.3	3,139	2,379.9
2003	2,392	2,053.4	365	222.3	479	137.4	3,236	2,413.1
2004	2,455	2,037.4 +	317	175.6 +	601	196.5 +	3,373	2,409.5
2005	2,251	1,876.9	392	211.3	708	227.3	3,351	2,315.5
2006	2,090	1,780.5	363	206.3	704	225.5	3,157	2,212.3
2007	2,104	1,809.1	354	219.0	860	239.3	3,318	2,267.4

* In order to report enrollment based on course location, a redistribution of headcount was made in Fall 2003. Breakdown by campus/location above the solid line is based on student campus code. Below the solid line, it is based on course location except for students enrolled in a combination of Klamath and Portland distance education courses only; headcount for these students is reported under their home campus.. Refer to table 2.1.1 (Part 2) for a detailed breakout of the new location categories.

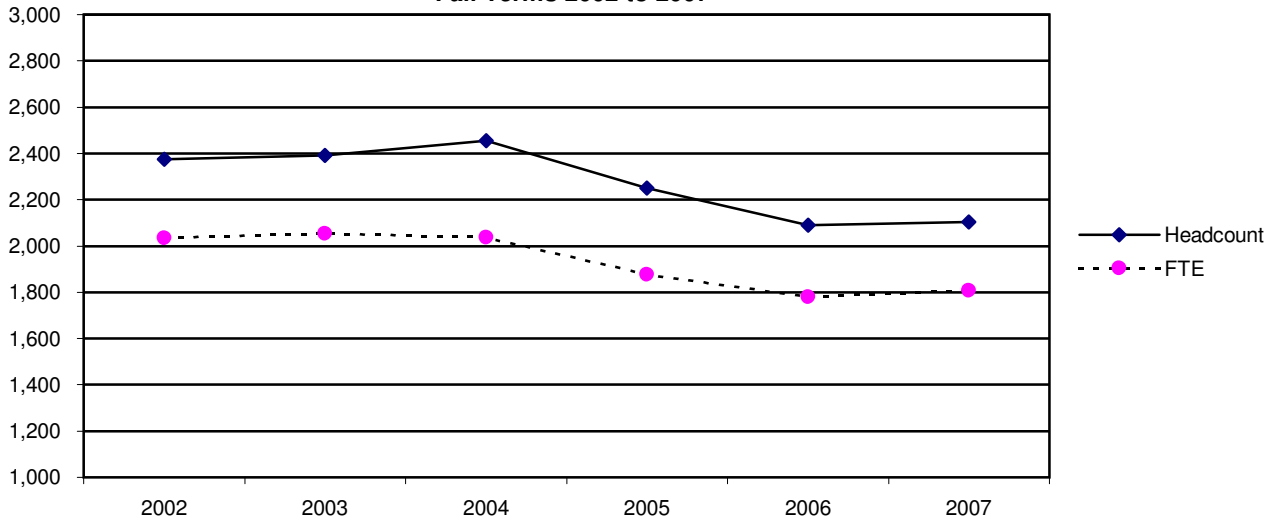
** Beginning 2003, **Klamath** includes traditional courses at the Klamath campus, high school transition, remedial courses, KCC, externship, field experience, other continuing education, and OHSU Nursing (headcount only); **Portland** includes Portland East/West campuses, OHSU Allied Partnership Programs, Renewable Energy Systems, and Ft. Lewis; and **Other** includes Boeing, Dental Hygiene-LaGrande, high school ACP, degree completion (headcount only in 2005 and 2006), and Respiratory Care (Rogue CC) classes. Prior to 2003, the OHSU Allied Partnership Programs were reported under Klamath.

*** An on site industry program in the Seattle area was established in 1998 and administered through the Portland campus (note the increase in headcount and FTE). Beginning Fall 1999, the Klamath campus oversees the program and through 2002, is credited with headcount and FTE generated by these students.

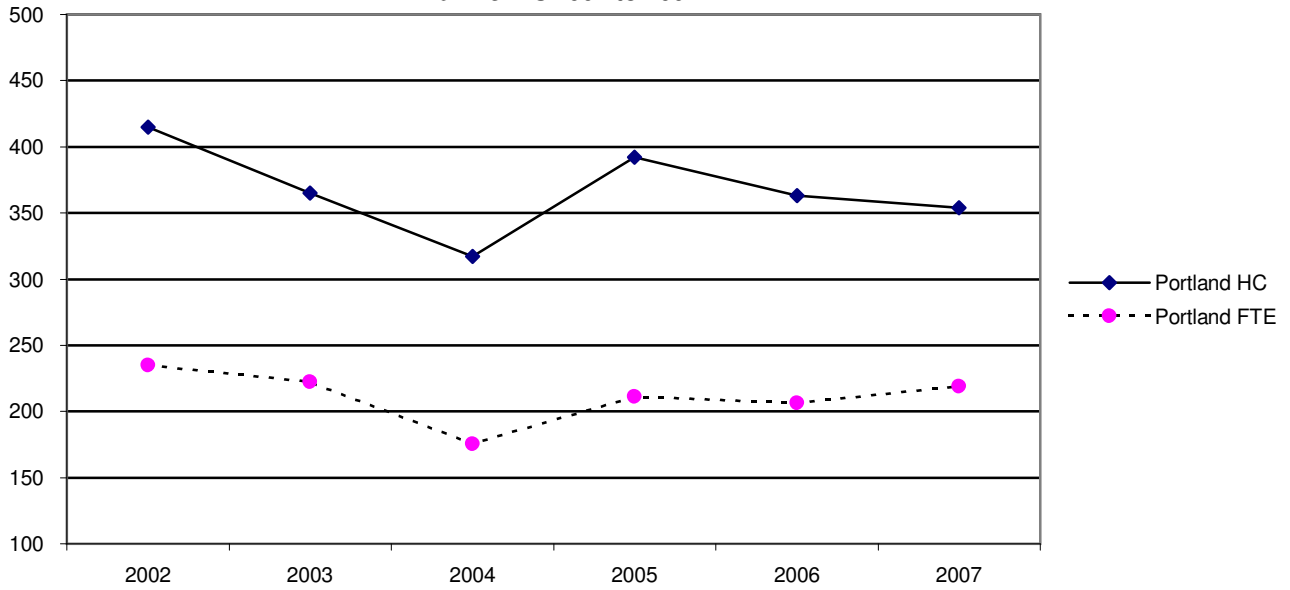
+ Corrections have been made to previously reported 2004 FTE figures. In the 2004-05 Fact Book, all FTE was reported under the location of the student instead of the course.

SOURCES: Fall 1997 to 1998 - SCARF [FTE] and Daily Counts/FTE Report [Headcount]
 Fall 1999 to 2001 - SCARF [FTE] and Student Extracts [Headcount]
 Fall 2002 and forward - Fact Book table 2.1.1 (Part 2)

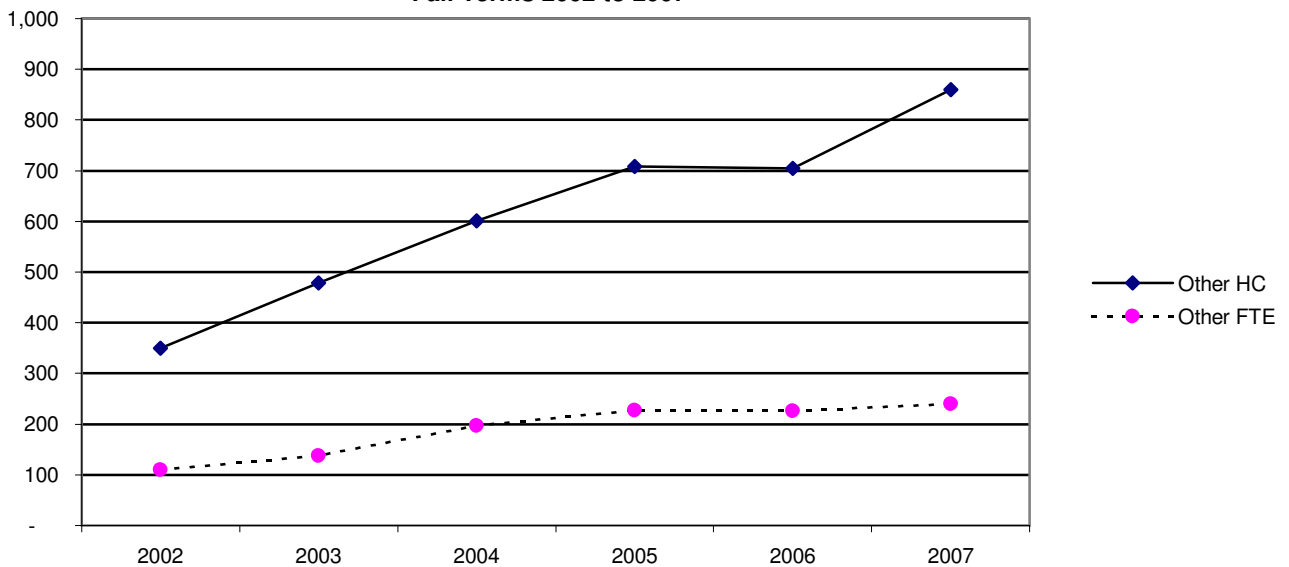
KLAMATH FALLS - HEADCOUNT AND FTE (Graph 2.1.10a)
Fall Terms 2002 to 2007



PORTLAND OPERATIONS - HEADCOUNT AND FTE (Graph 2.1.10b)
Fall Terms 2002 to 2007



OTHER - HEADCOUNT AND FTE (Graph 2.1.10c)
Fall Terms 2002 to 2007



**Table 2.1.11
Credit Hours* and Annual FTE** by Course Department
2003-04 to 2007-08**

<i>Course Department</i>	<i>2003-04</i>	<i>2004-05</i>	<i>2005-06</i>	<i>2006-07</i>	<i>2007-08</i>
Credit Hours (Academic Year* Totals)					
School of Engineering, Technology, and Management					
Civil Engineering and Geomatics	3,923	4,772	4,537	5,091	4,948
Computer Systems Engineering Tech	9,409	7,315	6,049	4,963	4,852
Electrical and Renewable Energy***	2,218	2,065	2,056	1,832	1,412
Management	14,540	14,663	12,226	10,541	9,758
Manufacturing/Mechanical Engr Tech	4,464	4,540	4,273	4,135	4,017
School of Health, Arts, and Sciences					
Allied Health****	3,868	4,493	6,408	6,302	6,065
Communication	12,046	11,720	11,554	11,374	11,976
Dental Hygiene	2,230	2,527	4,307	5,310	5,551
Humanities and Social Sciences	17,618	16,449	14,427	12,580	12,209
Mathematics	12,044	11,248	9,277	8,917	9,874
Medical Imaging Technology	10,968	13,690	13,797	14,973	15,609
Natural Sciences	13,139	13,382	12,302	12,510	12,494
Other					
Military Science	71	50	34	24	33
OIT Portland East/West*****	5,922	4,896	5,613	5,735	6,881
TOTAL CREDIT HOURS	112,460	111,810	106,860	104,287	105,679
Annual FTE**					
School of Engineering, Technology, and Management					
Civil Engineering and Geomatics	87.2	106.0	100.8	113.2	110.0
Computer Systems Engineering Tech	209.1	162.6	134.4	110.3	107.8
Electrical and Renewable Energy***	49.3	45.9	45.7	40.7	31.4
Management	323.1	325.8	271.7	234.3	216.8
Manufacturing/Mechanical Engr Tech	99.2	102.2	96.9	93.0	90.2
School of Health, Arts, and Sciences					
Allied Health****	86.0	99.8	142.4	140.0	134.8
Communication	267.7	260.4	256.8	252.8	266.1
Dental Hygiene	49.6	56.2	95.7	118.0	123.4
Humanities and Social Sciences	391.4	365.6	320.5	279.6	271.3
Mathematics	267.6	250.0	206.2	198.2	219.4
Medical Imaging Technology	243.7	304.2	306.6	332.7	346.9
Natural Sciences	292.0	297.4	273.4	278.0	277.6
Other					
Military Science	1.6	1.1	0.8	0.5	0.7
OIT Portland East/West*****	131.6	109.1	125.1	127.5	153.4
TOTAL ANNUAL FTE	2,499.1	2,486.3	2,377.0	2,318.8	2,349.8

* Summer through spring (end-of-term)

** Annual FTE is total academic year credit hours divided by 45 for undergraduates and by 36 for graduates.

*** Electronics and Laser Engineering Tech combined with Electrical and Renewable energy 2007-08.

**** Allied Health includes Clinical Laboratory Science, Paramedic Education, and Respiratory Care.

***** Based on course campus code. Includes Renewable Energy Systems 2004-05 to 2006-07.

SOURCES: 2002-03 and 2003-04 - RAM Model Warehouse; 2004-05 - Course Information Download (ZJRK002) and SCARF REG/SECT Tables; 2005-06 forward - SCARF IR Table

Table 2.1.12
UNDUPLICATED HEADCOUNT IN CREDIT COURSES*
2002-03 to 2007-08

<i>Type of Course</i>	<i>2002-03</i>	<i>2003-04</i>	<i>2004-05</i>	<i>2005-06</i>	<i>2006-07</i>	<i>2007-08</i>
Regular	3,464	3,576	3,675	3,550	3,414	3,440
Extended**	611	641	841	964	983	998
Total	4,075	4,217	4,516	4,514	4,397	4,438

* Includes all credit-bearing student enrollment, either in regular campus courses (base enrollment) or through self-supported courses (extended enrollment), summer through spring terms. Students enrolled at both the undergraduate and graduate levels are counted twice.

** The "extended" category includes students enrolled only in extended courses (such as distance education, continuing education or remedial courses). Students enrolled in regular courses only or a combination of regular and extended courses are counted in the regular category.

SOURCE: OUS Institutional Research Services (ERAN-01 and ERAN-05)

**Table 2.1.13
Distance Education Enrollment Summary
2007-08 (End-of-Term)**

Enrollment in Distance Education Courses									
Student Campus	Course Campus	Summer 2007		Fall 2007		Winter 2008		Spring 2008	
		Duplicated Headcount	FTE*	Duplicated Headcount	FTE*	Duplicated Headcount	FTE*	Duplicated Headcount	FTE*
Klamath	Klamath	798	146.8	952	167.7	987	173.0	926	168.8
Klamath	Portland	0	0.0	7	1.2	8	2.1	6	1.3
Portland	Portland	17	4.3	72	15.5	41	12.0	52	11.7
Portland	Klamath	100	18.7	102	17.3	127	23.9	100	19.7
TOTAL		915	169.8	1,133	201.7	1,163	211.0	1,084	201.5

Unduplicated Headcount of Students Enrolled in DE Courses									
Student Campus	Summer 2007		Fall 2007		Winter 2008		Spring 2008		
	Number	Percent	Number	Percent	Number	Percent	Number	Percent	
Klamath**	472	86%	590	83%	652	84%	635	85%	
Portland	76	14%	125	17%	122	16%	114	15%	
TOTAL	548	100%	715	100%	774	100%	749	100%	

* FTE calculation: All undergraduates - total credit hours divided by 15; master's students - total credit hours divided by 12.

** Includes Degree Completion, Dental Hygiene-LaGrande, Information Technology Online, and Respiratory Care programs.

NOTE: Duplicated Headcount is the total enrollment in all distance education sections. A student is counted more than once if enrolled in more than one DE class.

SOURCES: Student Extract and SCARF REG/SECT files

Table 2.2.1
AVERAGE AGE BY STUDENT LEVEL AND GENDER
Fall 2007 -- 4th Week

<i>Student Level</i>	<i>Male</i>	<i>Female</i>	<i>Total</i>
Freshman	20.7	21.2	20.9
Sophomore	24.1	24.1	24.1
Junior	26.4	27.2	26.8
Senior	29.9	31.5	30.7
Postbac UG	35.7	31.5	33.8
Non-admitted UG	23.3	22.3	22.7
Master's	37.7	-	37.7
ALL STUDENTS	26.3	26.3	26.3

SOURCE: Student Extract

Table 2.2.2
HEADCOUNT DISTRIBUTION BY AGE
Fall Terms 2003 to 2007

Age	2003	2004	2005	2006	2007
18 and under*	711	706	657	606	709
19-20	589	593	569	514	516
21-22	555	572	525	516	554
23-24	284	317	334	294	308
25-29	358	368	400	439	421
30-39	393	408	457	395	414
40-49	267	304	289	263	257
50 and over	77	100	120	130	139
Unknown	2	5	--	--	--
TOTAL	3,236	3,373	3,351	3,157	3,318
Average Age**	25.6	26.0	26.4	26.6	26.3

* Beginning Fall 2003, the number of high school Advanced College Placement students grew significantly resulting in an increase in students aged 18 and under.

** Average age is calculated based on the exact age of students (years and days).

SOURCE: Student Extract, Fall Terms 4th Week

Table 2.2.3
ENROLLMENT BY GEOGRAPHIC ORIGIN*
Fall Terms 2003 to 2007

<i>Geographic Origin</i>	<i>2003</i>	<i>2004</i>	<i>2005</i>	<i>2006</i>	<i>2007</i>
Alaska	19	15	11	12	13
California	130	133	134	158	163
Hawaii	17	17	22	23	26
Idaho	14	20	13	21	20
Oregon	2,818	2,894	2,832	2,561	2,649
Washington	134	169	197	202	229
Other U.S. States	86	110	128	168	209
Foreign Countries	17	15	14	12	9
Unknown Source	1	0	0	0	0
TOTAL	3,236	3,373	3,351	3,157	3,318

* Based on student's address at time of application.

SOURCE: 2003 to 2004 - Enrollment Analysis by Geographic Source (SCARF Report);
2005 forward - Student Extract, Fall Terms -- 4th Week

Table 2.2.4
STUDENTS FROM OREGON* BY COUNTY
Fall 2007

<u>County</u>	<u>#</u>	<u>%</u>	<u>County</u>	<u>#</u>	<u>%</u>	<u>County</u>	<u>#</u>	<u>%</u>
Baker	6	0.2%	Hood River	10	0.4%	Polk	15	0.6%
Benton	31	1.2%	Jackson	222	8.4%	Sherman	1	0.0%
Clackamas	111	4.2%	Jefferson	25	0.9%	Tillamook	15	0.6%
Clatsop	23	0.9%	Josephine	76	2.9%	Umatilla	38	1.4%
Columbia	43	1.6%	Klamath	915	34.5%	Union	39	1.5%
Coos	49	1.8%	Lake	43	1.6%	Wallowa	2	0.08%
Crook	63	2.4%	Lane	104	3.9%	Wasco	15	0.6%
Curry	14	0.5%	Lincoln	7	0.3%	Washington	137	5.2%
Deschutes	169	6.4%	Linn	41	1.5%	Wheeler	2	0.1%
Douglas	74	2.8%	Malheur	3	0.1%	Yamhill	31	1.2%
Gilliam	1	0.04%	Marion	88	3.3%	Unknown County	0	0.0%
Grant	4	0.2%	Morrow	7	0.3%	Total Students		
Harney	7	0.3%	Multnomah	218	8.2%	from Oregon	2,649	

* Based on student's address at time of application.

SOURCE: Student Extract

Table 2.2.5
ENROLLMENT BY PREVIOUS ATTENDANCE
2003 to 2007 (Fall Terms -- 4th Week)

<i>Previous Attendance</i>	2003	2004	2005	2006	2007
<i>Continuing w/o Interruption</i>	1,820	1,880	1,850	1,765	1,770
<i>Returning After Absence</i>	277	179	187	190	217
<i>New Admits from High School or GED</i>	358	321	265	296	288
Oregon High School	296	282	222	247	244
Other U.S. High School	46	29	39	44	39
Foreign H.S.	5	5	1	2	--
GED	11	5	3	3	5
Unknown High School	--	--	--	--	--
<i>New Admits from Colleges & Universities</i>	355	450	452	457	515
OUS Institution	42	44	43	35	40
Oregon Community College	185	248	238	201	261
Other Oregon College	7	3	7	2	2
Other U.S. College	91	98	105	143	154
Foreign College	--	7	5	2	1
Unknown College	30	50	54	74	57
<i>New Non-Admits</i>	426	543	597	449	528
TOTAL	3,236	3,373	3,351	3,157	3,318

SOURCE: OUS Institutional Research Services (Report ERTE-01 Part 2)

Table 2.2.6
AVERAGE HIGH SCHOOL GPA OF FIRST-TIME FRESHMEN
by Gender & Residency
2002 to 2007 (Fall Terms -- 4th Week)

	<i>2002</i>	<i>2003</i>	<i>2004</i>	<i>2005</i>	<i>2006</i>	<i>2007</i>
<i>Gender</i>						
Male	3.24	3.27	3.38	3.44	3.32	3.36
Female	3.42	3.47	3.49	3.58	3.54	3.44
<i>Residency</i>						
Resident	3.30	3.36	3.44	3.53	3.43	3.41
Non-resident	3.24	3.33	3.29	3.36	3.36	3.34
<i>All First-Time Freshmen</i>	<i>3.30</i>	<i>3.36</i>	<i>3.43</i>	<i>3.51</i>	<i>3.42</i>	<i>3.40</i>

SOURCE: OUS Institutional Research Services

Table 2.2.7
ENROLLMENT OF FIRST-TIME FRESHMEN BY HIGH SCHOOL GPA AND GENDER
Fall 2007 -- 4th Week

<i>High School GPA</i>	<i>Male</i>	<i>Female</i>	<i>Total</i>
3.75 and above	29	33	62
3.50 - 3.74	36	29	65
3.25 - 3.49	27	32	59
3.00 - 3.24	29	19	48
2.75 - 2.99	21	16	37
2.50 - 2.74	7	1	8
2.25 - 2.49	2	2	4
2.00 - 2.24	0	0	0
Less than 2.00	0	0	0
GED Admits	3	2	5
No GPA Reported	0	0	0
TOTAL	154	134	288
<i>Average GPA</i>	<i>3.36</i>	<i>3.44</i>	<i>3.40</i>

SOURCE: OUS Institutional Research Services

Table 2.2.8
ENROLLMENT OF FIRST-TIME FRESHMEN BY HIGH SCHOOL GPA AND RESIDENCY
Fall 2007 -- 4th Week

<i>High School GPA</i>	<i>Resident</i>	<i>Non-Resident</i>	<i>Total</i>
3.75 and above	56	6	62
3.50 - 3.74	60	5	65
3.25 - 3.49	49	10	59
3.00 - 3.24	44	4	48
2.75 - 2.99	31	6	37
2.50 - 2.74	7	1	8
2.25 - 2.49	3	1	4
2.00 - 2.24	0	0	0
Less than 2.00	0	0	0
GED Admits	3	2	5
No GPA Reported	0	0	0
TOTAL	253	35	288
<i>Average GPA</i>	<i>3.41</i>	<i>3.34</i>	<i>3.40</i>

SOURCE: OUS Institutional Research Services

Table 2.2.9
FIRST-TIME FRESHMEN SAT TEST SCORE STATISTICS
Fall 2007 -- 4th Week

<i>Middle 50% Range of Scores</i>				
<i>Gender</i>	<i>Math</i>	<i>Critical Reading</i>	<i>Writing</i>	<i># with Scores</i>
Male	490-600	450-570	410-530	138
Female	440-540	420-530	420-520	119
ALL	460-580	430-560	410-530	257

<i>Average Scores</i>				
<i>Gender</i>	<i>Math</i>	<i>Critical Reading</i>	<i>Writing</i>	<i># with Scores</i>
Male	550	510	471	138
Female	487	476	469	119
ALL	521	494	470	257

SOURCE: OUS Institutional Research Services

**Table 2.2.10
ADMISSIONS SUMMARY*
Fall 2007**

<i>Admit Status</i>	<i>Freshman</i>	<i>Transfer**</i>	<i>Postbac</i>	<i>Graduate</i>	<i>Total</i>
Admitted	579	579	70	5	1,233
Active Admits	413	494	57	5	969
Cancelled Admits***	166	85	13	0	264
Denied	46	35	6	0	87
Total Completed Applications	625	614	76	5	1,320
Pending	124	106	6	2	238
Pending Applications	27	35	0	0	62
Cancelled Pending Apps***	97	71	6	2	176
TOTAL APPLICATIONS	749	720	82	7	1,558

* Data in this table differs slightly from the applicant yield report generated by the Admissions Office. This is due to a different run date of each report. Admissions data in the Banner system is updated throughout the term.

** It is possible for a transfer student to have a class level of freshman. A student must have earned at least 36 college credits to be admitted as a transfer student. Thus, if a student has 36 but fewer than 45 credits, they would have a class level of freshman. Transfer students will also be classified as freshmen if their college transcripts have not been evaluated and credits posted to the Banner system.

*** Students who submitted applications, but who will not be attending OIT.

SOURCE: Characteristics by Application Status (ZJRA036); report generated 10/29/2007.

Table 2.2.11
GRADE DISTRIBUTION BY DEPARTMENT*
Fall 2007

<i>Department</i>	<i>Percent of Total Grades Given</i>							<i>Total Grades Given</i>
	<i>A</i>	<i>B</i>	<i>C</i>	<i>D</i>	<i>F</i>	<i>W</i>	<i>Other**</i>	
Allied Health***	55.1	24.7	7.7	1.0	0.0	1.6	9.9	506
Civil Engineering	39.9	28.8	13.5	2.5	2.5	3.9	8.9	281
Communication	46.6	30.9	10.5	2.2	4.4	3.4	2.0	894
Computer Engineering	43.8	26.9	13.4	4.5	5.1	5.1	1.2	491
Dental Hygiene	73.9	20.7	1.9	0.0	0.0	1.5	1.9	468
Electronics Engineering	30.8	21.9	20.5	4.8	2.7	5.5	13.7	146
Humanities/Social Sciences	41.6	30.8	15.0	3.9	4.4	2.9	1.4	1,161
Geomatics	38.5	31.9	19.3	3.7	2.2	2.2	2.2	135
Management	46.8	25.0	12.1	5.0	5.0	3.9	2.3	663
Manufacturing Engineering	51.5	37.9	4.5	0.0	4.5	0.0	1.5	66
Mathematics	22.6	28.3	20.9	8.5	9.7	9.1	0.7	702
Mechanical Engineering	36.0	33.3	14.6	4.8	4.8	3.0	3.6	336
Medical Imaging	46.5	42.0	8.3	1.3	1.0	0.4	0.5	821
Natural Sciences	37.3	28.6	17.7	5.0	4.3	6.1	1.0	1,200
Renewable Energy Systems	38.5	7.7	7.7	23.1	0.0	23.1	0.0	13
Portland East/West****	54.5	26.9	10.2	0.5	3.3	1.5	3.1	550
INSTITUTIONAL TOTAL	44.0	29.4	12.9	3.5	3.9	3.7	2.5	8,433

* Excludes Advanced College Placement, Military Science, Physical Education, Distance Education, and other continuing education classes. In addition, grades in graduate classes are excluded.

** Includes Incomplete, In Progress, Pass, and Audit grades.

*** Includes Clinical Lab Science, Paramedic, and Respiratory Care classes.

**** Prior to Fall 2004, included courses with a Metro department code; beginning Fall 2004, includes courses with a Metro campus code.

SOURCE: Course Extract

Table 2.2.12
OVERALL GRADE DISTRIBUTION*
2003 to 2007 (Fall Terms)

<i>Grade</i>	<i>Percent of Total Grades Given</i>				
	<i>2003</i>	<i>2004</i>	<i>2005</i>	<i>2006</i>	<i>2007</i>
A	42%	43%	43%	45%	44%
B	26%	27%	28%	28%	29%
C	14%	14%	13%	13%	13%
D	4%	3%	4%	4%	4%
F	4%	4%	4%	4%	4%
W	8%	7%	5%	4%	4%
Other**	2%	2%	3%	2%	2%
TOTAL	10,320	9,645	8,901	8,401	8,433

* Excludes Advanced College Placement, Military Science, Physical Education, Distance Education, and other continuing education classes. Beginning 2006, grades in graduate classes are excluded.

** Includes Incomplete, In Progress, Pass and Audit grades.

SOURCE: Table 2.2.11

Table 2.2.13 (Part 1)
DEGREES AWARDED BY MAJOR
2003-04 to 2007-08

<i>Degree/Program</i>	<i>2003-04</i>	<i>2004-05</i>	<i>2005-06</i>	<i>2006-07</i>	<i>2007-08</i>
Master of Science in Engineering Technology	2	--	--	3	4
Computer Engineering Technology	2	--	--	--	--
Manufacturing Engineering Technology				3	4
Bachelor of Science	408	496	461	489	434
Arts and Sciences					
Applied Psychology	45	54	46	44	42
Biology	--	--	--	10	6
Communication Studies	9	13	13	13	13
Environmental Sciences	6	7	6	2	1
Engineering					
Civil Engineering	18	25	20	23	23
Geomatics (Surveying)	7	10	7	10	8
Manufacturing Engineering Technology	25	17	22	29	15
Mechanical Engineering	--	--	--	3	3
Mechanical Engineering Technology	30	27	32	31	19
Computer Engineering Technology	17	20	28	15	7
Software Engineering Technology	47	48	47	44	36
Electronics Engineering Technology	16	12	19	18	17
Laser Optical Engineering Technology	5	2	1	--	--
Diesel Power Technology*	--	1	--	--	--
Health					
Clinical Lab Science	23	18	22	23	24
Dental Hygiene	17	17	27	29	23
Dental Hygiene Outreach	2	6	5	6	15
Echocardiography	--	--	1	6	4
Health Sciences	10	11	7	1	3
Radiologic Science (RDSC)	23	34	34	43	46
Radiologic Science Outreach	2	3	1	4	5
Nuclear Medicine Technology	11	21	15	18	18
Respiratory Care Outreach	--	--	2	5	8
Diagnostic Medical Sonography	15	23	16	22	24
Vascular Technology	14	21	23	23	25
Vascular Technology Outreach	1	4	8	8	5
Management					
IT Appl Development (includes IT)	15	19	9	12	9
IT Bus/Systems Analysis (includes MIS)	19	35	11	13	3
IT Accounting (includes MIS:Mgmt Actg)	3	3	2	--	4
Management: Accounting Option	8	2	5	8	4
Management: Marketing Option	10	19	12	9	7
Management: Small Business Option	6	15	13	9	11
Operations Management	4	9	7	8	6
Total Associate Degrees	85	74	80	98	81
Associate of Arts	19	19	14	13	8
Associate of Applied Science	56	36	43	68	65
Engineering					
Diesel Power Technology*	--	1	--	--	--
Health					
Dental Hygiene	20	1	--	--	--
Dental Hygiene/LaGrande	--	--	--	25	26
Paramedic Education	26	29	22	19	21
Respiratory Care	--	--	19	23	16
Management					
Office Systems Technology	10	5	2	1	2
Associate of Engineering	10	19	23	17	8
Computer Engineering Technology	4	5	10	7	5
Electronics Engineering Technology	3	5	2	3	1
Software Engineering Technology	3	9	11	7	2
TOTAL DEGREES AWARDED	495	570	541	590	519

* Discontinued program

SOURCE: Table 2.2.14

Table 2.2.13 (Part 2)

**MINORS AWARDED SINCE INCEPTION
1998-99 through 2007-08**

Minor	1998-99	1999-00	2000-01	2001-02	2002-03	2003-04	2004-05	2005-06	2006-07	2007-08
Applied Mathematics	-	-	3	7	10	16	14	28	18	24
Business	-	-	-	4	16	26	41	22	33	23
Geographic Information Science	-	-	-	-	-	-	-	-	1	2
Information Technology	-	-	-	-	-	-	-	-	2	-
International Business	-	-	-	-	-	2	2	-	3	1
International Relations	-	-	-	-	1	6	9	-	3	-
Management Information Systems	-	-	-	-	1	2	7	2	1	-
Medical Information Systems	-	-	-	-	-	-	1	-	-	-
Psychology	-	-	-	3	1	2	12	11	13	9
Technical Communication	6	5	10	7	4	13	10	2	3	3
TOTAL	6	5	13	21	33	67	96	65	77	62

SOURCE: Minors Awarded by Academic Year (ZJRR165)

**Table 2.2.14
DEGREES AWARDED BY ETHNICITY AND GENDER
2007-08**

Degree/Program	American Indian/ Alaska Native		Asian/Pacific Islander		Black/African American		Hispanic		White Non-Hispanic		International Student		Unknown		TOTALS		
	M	F	M	F	M	F	M	F	M	F	M	F	M	F	M	F	ALL
Master of Science	-	-	-	-	-	-	-	-	3	-	-	-	1	-	4	-	4
Manufacturing Engr Tech	-	-	-	-	-	-	-	-	3	-	-	-	1	-	4	-	4
Bachelor of Science	1	1	19	14	1	2	4	7	170	187	2	2	13	11	210	224	434
Arts and Sciences	-	1	1	2	-	-	2	1	17	34	-	1	1	2	21	41	62
Applied Psychology	-	1	-	2	-	-	1	1	10	25	-	1	-	1	11	31	42
Biology	-	-	-	-	-	-	1	-	1	3	-	-	1	-	3	3	6
Communication Studies	-	-	1	-	-	-	-	-	5	6	-	-	-	1	6	7	13
Environmental Sciences	-	-	-	-	-	-	-	-	1	-	-	-	-	-	1	-	1
Engineering	1	-	11	-	-	-	1	4	91	9	1	-	7	3	112	16	128
Civil Engineering	1	-	-	-	-	-	-	1	17	3	-	-	-	1	18	5	23
Geomatics	-	-	1	-	-	-	-	-	3	2	-	-	2	-	6	2	8
Manufacturing Engr Tech	-	-	3	-	-	-	1	1	6	1	-	-	2	1	12	3	15
Mechanical Engr	-	-	-	-	-	-	-	-	2	1	-	-	-	-	2	1	3
Mechanical Engr Tech	-	-	4	-	-	-	-	1	12	1	1	-	-	-	17	2	19
Computer Engr Tech	-	-	-	-	-	-	-	-	7	-	-	-	-	-	7	-	7
Software Engr Tech	-	-	1	-	-	-	-	1	30	1	-	-	3	-	34	2	36
Electronics Engr Tech	-	-	2	-	-	-	-	-	14	-	-	-	-	1	16	1	17
Health	-	-	4	11	1	2	-	2	35	137	-	1	2	5	42	158	200
Clinical Lab Science	-	-	-	3	-	1	-	1	2	14	-	-	2	1	4	20	24
Dental Hygiene	-	-	-	3	-	-	-	-	1	19	-	-	-	-	1	22	23
Dental Hygiene Outrch	-	-	-	-	-	1	-	-	1	13	-	-	-	-	1	14	15
Echocardiography	-	-	-	-	1	-	-	-	-	3	-	-	-	-	1	3	4
Health Sciences	-	-	-	-	-	-	-	-	-	3	-	-	-	-	-	3	3
Radiologic Science	-	-	2	1	-	-	-	-	16	25	-	-	-	2	18	28	46
RDSC Outreach	-	-	-	-	-	-	-	-	2	3	-	-	-	-	2	3	5
Nuclear Medicine Tech	-	-	-	-	-	-	-	1	7	9	-	-	-	1	7	11	18
Respiratory Care Outrch	-	-	-	-	-	-	-	-	1	6	-	1	-	-	1	7	8
Diag Med Sonography	-	-	-	1	-	-	-	-	1	22	-	-	-	-	1	23	24
Vascular Technology	-	-	2	3	-	-	-	-	4	15	-	-	-	1	6	19	25
Vascular Tech Outreach	-	-	-	-	-	-	-	-	-	5	-	-	-	-	-	5	5
Management	-	-	3	1	-	-	1	-	27	7	1	-	3	1	35	9	44
IT Appl Development	-	-	-	1	-	-	-	-	6	-	1	-	1	-	8	1	9
IT Bus/Systems Analysis	-	-	-	-	-	-	-	-	2	-	-	-	1	-	3	-	3
IT Accounting	-	-	1	-	-	-	1	-	1	1	-	-	-	-	3	1	4
Mgmt: Accounting	-	-	-	-	-	-	-	-	2	2	-	-	-	-	2	2	4
Mgmt: Marketing	-	-	-	-	-	-	-	-	3	3	-	-	-	1	3	4	7
Mgmt: Small Business	-	-	-	-	-	-	-	-	10	-	-	-	1	-	11	-	11
Operations Mgmt	-	-	2	-	-	-	-	-	3	1	-	-	-	-	5	1	6
Total Assoc Degrees	-	1	1	2	-	1	-	1	20	47	-	-	4	4	25	56	81
Associate of Arts	-	1	-	-	-	-	-	1	3	3	-	-	-	-	3	5	8
A.A.S.	-	-	-	2	-	1	-	-	10	44	-	-	4	4	14	51	65
Health																	
Dental Hygiene/LaGrande	-	-	-	2	-	1	-	-	-	22	-	-	-	1	-	26	26
Paramedic Educ	-	-	-	-	-	-	-	-	7	7	-	-	4	3	11	10	21
Respiratory Care	-	-	-	-	-	-	-	-	3	13	-	-	-	-	3	13	16
Management																	
Office Systems Tech	-	-	-	-	-	-	-	-	-	2	-	-	-	-	-	2	2
A.E.	-	-	1	-	-	-	-	-	7	-	-	-	-	-	8	-	8
Computer Engr Tech	-	-	1	-	-	-	-	-	4	-	-	-	-	-	5	-	5
Electronics Engr Tech	-	-	-	-	-	-	-	-	1	-	-	-	-	-	1	-	1
Software Engr Tech	-	-	-	-	-	-	-	-	2	-	-	-	-	-	2	-	2
TOTAL	1	2	20	16	1	3	4	8	193	234	2	2	18	15	239	280	519

SOURCE: Graduate Analysis by Degree and Major (ZJRRDEG)

Table 2.2.15
FRESHMAN ENROLLMENT FROM MAJOR FEEDER AREAS
Fall 2006 and Fall 2007 (4th Week)

	Fall 2006			Fall 2007		
	Number	% of OR	% of Total	Number	% of OR	% of Total
Total All OIT Freshmen	541	--	100.0	474	--	100.0
Total Oregon OIT freshmen	458	100.0	84.7	413	100.0	87.1
Klamath County	139	30.3	25.7	165	40.0	34.8
Jackson County	56	12.2	10.4	44	10.7	9.3
Subtotal	195	42.6	36.0	209	50.6	44.1
Clackamas County	24	5.2	4.4	17	4.1	3.6
Multnomah County	28	6.1	5.2	23	5.6	4.9
Washington County	27	5.9	5.0	20	4.8	4.2
Subtotal	79	17.2	14.6	60	14.5	12.7
Lane County	14	3.1	2.6	17	4.1	3.6
Marion County	18	3.9	3.3	11	2.7	2.3
Douglas County	18	3.9	3.3	12	2.9	2.5
Subtotal	50	10.9	9.2	40	9.7	8.4

SOURCE: Student Extract

Table 2.3.1
OWLS COMPETE IN NAIA

The National Association of Intercollegiate Athletics (NAIA) currently administers intercollegiate programs for nearly 300 colleges and universities of moderate enrollment. The purpose of the NAIA is to promote the education and development of students through intercollegiate athletic participation. Member institutions, although varied and diverse, share a common commitment to high standards and the principle that athletics serve as an integral part of education.

Established in 1940 as the National Association of Intercollegiate Basketball, the NAIB evolved from a "National Small College Basketball Tournament" in 1937. The NAIB was renamed the NAIA in 1952 and is currently headquartered in Olathe, Kansas.

NAIA schools are split into Division I and Division II based on the amount of financial aid available from the member institutions to their student athletes. Division II, of which Oregon Institute of Technology is a member, offers the equivalent of six full scholarships, while Division I schools offer 11 scholarships.

The NAIA divides the United States and British Columbia into 26 conference entities of various proportions for qualifying into their national tournaments. They currently organize and conduct 23 national championships, 12 for men and 11 for women in 13 different sports.

OIT is a member of the Cascade Collegiate Conference with Eastern and Southern Oregon Universities; Cascade College, Concordia University, Corban College, Northwest Christian College and Warner Pacific College in Oregon. Other conference members include College of Idaho, The Evergreen State (Wash.) and Northwest University (Washington).

OIT competes in cross-country, track and field and basketball (men and women), baseball (men), softball, soccer (men and women) and volleyball (women).

SOURCE: OIT Athletics, Recreation and Fitness Center

**Table 2.3.2
INTERCOLLEGIATE ATHLETICS
2007-08**

Director of Athletics: **Michael Schell**

MEN'S SPORTS

Baseball
Basketball
Cross Country
Soccer
Track & Field

COACH

Matt Miles
Dan Miles
Ken Coffman
Bryan Mueller
Ken Coffman

WOMEN'S SPORTS

Basketball
Cross Country
Soccer
Softball
Track & Field
Volleyball

COACH

Matt Greenleaf
Ken Coffman
Bryan Mueller
Greg Stewart
Ken Coffman
Angela Stewart

SOURCE: OIT Athletics, Recreation and Fitness Center

Table 2.3.3
ATHLETIC ACHIEVEMENTS
2007-08

Oregon Institute of Technology had seven NAIA All-Americans and 14 All-American Scholar Athletes, in addition to numerous Cascade Collegiate Conference honorees for the 2007-2008 school year.

The men's basketball team came away with top honors going 31-6 and gaining an at-large berth to the national tournament (making their tenth trip in the last 12 years). Tech would go on to win all five games at the national championship and came home with their second national title in five years. Ryan Fiegi finished his career second on the all-time scoring list at Tech, was selected the 2008 CCC Player of the Year, a 1st team All-American, a NAIA Scholar and the NAIA II Player of the Year. It was his second All-American honor in the past two years. Jgwon Hogges and Josh Wetzler were named to the NAIA all-tournament team. Head coach Danny Miles was named 2008 NAIA II Coach of the Year, while Hogges also received the tournaments Hustle Award. Fiegi was the only All-American Scholar Athlete.

For the sixth straight year and under first-year head coach Matt Greenleaf, the women's basketball team won 20+ games with a record of 23-9 in 2008. The team finished third in the CCC standings and won their first round conference playoff game over Concordia University. Amanda Johnston was named the conference Newcomer of the Year, while Jenna Ball was named 1st team All-Conference and Cora McVey landed on the all-defensive team for the second straight season. Both McVey and Jenni Miiller were selected as All-American Scholar Athletes.

The women's soccer team under third-year head coach Bryan Mueller made the playoffs for the second time in school history and ascended to the CCC title game, which qualified them for Region I play for the first time in school history. Katie O'Brien and Jaclyn Unruh were named first team all-conference with O'Brien also receiving Region I honors. Amy Speakman and Brittany Garton were named All-American Scholar Athletes.

The volleyball team under first-year head coach Angela Stewart had another outstanding campaign. The Owls recorded their second best win record in school history with a 23-13 mark, a 3rd place CCC finish and a Region I tournament berth. Michelle Klaja was a first team CCC and Region I selection as an outside hitter.

In cross country, coach Ken Coffman took Oregon Tech freshman, Korey Humberston, to Kenosha, Wis. for his first taste of the NAIA national cross country championship. Humberston crossed the finish line 110th out of 258 runners held at the Wayne E. Dannehl Cross Country Course.

Humberston, who won the Cascade Conference individual championship in Eagle, ID earlier in the season, finished the 8K course in 26:20.05, finished eighth among the Cascade Collegiate Conference runners while finishing 15th among Region I participants at the national meet.

All-American Scholar Athletes included Randy Fox and Rachel Novak.

Coach Greg Stewart completed his fourth year at the reins of the softball team (36-14, 20-4), taking home his second Cascade Conference crown in the past four seasons. Jenni Bittle was named the Cascade Conference Player of the Year and joined on the All-Cascade squad by Brittany Warren, Katie King and Sunceray Titus, with head coach Greg Stewart picking up the 2008 Coach of the Year award. Bittle, King and Warren were also selected to the All-Region I squad. Stewart also grabbed Region I Coach of the Year honors, while both Bittle and Keri Gesner were named All-American Scholar Athletes.

With a new baseball coaching staff taking over for the 2008 season, no one knew what the expectations would be to the new season. Weather conditions always force the Owls to play on the road the first half of the season, so Tech had a horrible start, beginning with a 3-18 record in their first 21 contests. From there, the Owls found their bats and played some defense, winning their next 11 of

13 and going 19-12 their final 31 games, finishing up 22-30 on the year and giving Tech only their 3rd 20+ win season in school history.

Eight Owls received post-season honors, including 1st team all-conference awards to Casey Burton, Ryson Mauricio, Sean Teaters and Kenny Simmons. A trio of Owls picked up Region I honors including 1st team nods to Ryson Mauricio and Sean Teaters, while Casey Burton picked up a Gold Glove award. Ryson Mauricio also set an all-time single season hits record for Tech with 69 on the season and Ryan Henry was selected to the All-American Scholar-Athlete group.

Completing his 13th year as track guru, Ken Coffman's led his team to the CCC championship where Jguwon Hogges won all three sprint events at the Cascade Conference championship, helping the Owls men's track and field team to a 3rd place finish.

For his efforts, Hogges was named 2008 CCC Athlete of the Meet, for the second time, and set a new meet record in the 400m, finishing in 46.48 seconds.

On the women's side, The Lady Owls finished in 2nd place with 187 points, led by Tech's Michelle Klaja and Amy Sticka. Klaja ran away with the heptathalon, totaling 4,053 points, including wins in the 100 hurdles, shot put, long jump and the javelin, where she threw a career best 150-2". Klaja finished 2nd in the high jump while taking 3rd in the javelin and 100 hurdles. Amy Sticka set a new meet record in the triple jump, traveling 38-4 to go along with her win in the long jump with a distance of 17-10.75.

Head coach Ken Coffman led 14 Oregon Tech track & field athletes to the NAIA national meet, held May 22-24 at Ralph Korte Stadium in Edwardsville, Ill. The ladies came away with their highest finish ever at No. 11, which was tops for a Cascade Conference team and came home with five NAIA All-Americans, including Kelsey Stolz, Sarah Schelb and Michelle Klaja in the javelin, Nikki Smith in the 100 hurdles, Amy Sticka in the triple jump and Klaja in the heptathalon. Kyle Gomez was the lone male athlete with All-American honors coming in the javelin.

All-American Scholar Athletes for 2008 include: Randy Fox, Amy Sticka, Kelsey Stoltz, Samuel Jacobson and Rachel Novak.

SOURCE: OIT Athletics, Recreation and Fitness Center

**Table 2.3.4
OIT STUDENT CLUBS, ORGANIZATIONS & PROGRAMS**

Associated Students of OIT (ASOIT)

Cultural Clubs

The International Club
MeChA
Native American Club

Departmental & Professional Clubs & Organizations

Accounting (OTAC)
Associated Students of Civil Engineering (ASCE)
American Society of Mechanical Engineers (ASME)
Computer Systems Society (CSS)
Dental Hygiene (SADHA)
Diagnostic Medical Sonography (DMS)
Health Sciences
Institute of Electrical and Electronic Engineering (IEEE)
Nuclear Medicine
Professional Land Surveyors of Oregon (PLSO)
Psychology
Radiologic Science Club (SMIS/RDSC)
Society of Automotive Engineers (SAE)
Society of Manufacturing Engineers (SME)
Student Nurses Association (SNA)
Society of Women Engineers (SWE)
Students in Communication (SIC)
Vascular

Greeks

Phi Delta Theta Fraternity
Alpha Lambda Nu Sorority

Honoraries

Lambda Pi Eta
Phi Beta Lambda
Phi Theta Kappa
PSI Chi
Tau Alpha Pi

Publications and Media

KTEC (campus radio station)
OTB (Oregon Technical Broadcasting)
The Edge (campus newspaper)

Recreational / Special Interest Clubs

Adventum
Airsoft
Amateur Radio
Ball Room Dance Club
Billiards (OTBC)
Dance Club
FAST
GAME
Game Developers
Gay/Straight Alliance (GSA)
Laser Club
Mars Reach
OTAKU / Anime
OTTTTC (Table Tennis)
Owls for Access
Pep Band
Retro Gaming
Rock Climbing Club (RCC)
Rugby (Hittin' Hooters)
Sailing Club
Snowboarding
Theater Club
Tolarian Refugees
Trekkies
Water polo
Women's Club
Zymurgy Club (TZC)

Religious

Campus Crusade for Christ
Chi Alpha
Christian Fellowship

Residence Hall Association (RHA)

Student Programs

Campus Activities
The Diversity Center
New Student Orientation
The Outdoor Program
Women's Resource Center

SOURCE: Associated Students of OIT (ASOIT); as of 8/15/2008

**Table 2.3.5
STUDENT AWARDS
2007- 08**

President's Senior Cup: Presented by the faculty to two baccalaureate students, one from each school. Selection is primarily based on demonstrated academic excellence. Recipients of the President's Senior Cup are selected from students named Outstanding Scholars.

Paul Moullet
Health, Arts & Sciences

Brittany Garton
Engineering Technology & Management

Outstanding Scholar: Consists of students appointed by their department chair or program director who have demonstrated academic excellence in their major.

J. Rebecca Barden (Applied Psychology), **Paul Moullet** (Biology), **Brittany Garton** (Civil Engineering), **Ryan Henry** (Communication Studies), **Samuel Mancill** (Computer Engineering Technology), **Melissa Frank** (Dental Hygiene), **Stephanie Cloughton** (Diagnostic Medical Sonography), **Sharon Williams** (Echocardiography-Distance Education), **Brian Stout** (Electronics Engineering Technology), **David Davis** (Electronics Engineering Technology - Portland), **Leo Chan** (Geomatics), **Amy Sticka** (Health Sciences), **Vivian Lopez** (Information Technology - Portland), **Ryan Fiegi** (Mgmt-Accounting/IT Accounting Option), **Christopher Graber** (Mgmt: Entrepreneurship/ Small Business Mgmt), **Todd Christiaens** (Mgmt: Marketing), **Andrew Kawahara** (Operations Management), **Michael Grubbs** (Operations Management - Portland), **Craig Meadors** (Manufacturing Engineering Technology-Portland), **Brian Haas** (Manufacturing Engineering Technology- Boeing), **Katherine Arnall** (Mechanical Engineering), **Douglas Posthumus** (Mechanical Engineering Technology- Portland), **Kristin Kinsman** (Nuclear Medicine Technology), **Christie Wiles** (Nursing), **Dondi Visser** (Radiologic Science), **Courtney Chappell** (Respiratory Care - Distance Education), **Timothy Bailey** (Renewable Energy Systems- Portland), **Randall Tidd** (Software Engineering Technology), **Kevin Loveland** (Software Engineering Technology -Portland)

Owens Citizenship Award: Presented by the faculty to the student who has made outstanding contributions to the University.

Carrie Blomquist
Respiratory Care

Most Dedicated Student or Students Award: Presented by the faculty to the student whose loyalty to the University, involvement in campus and community activities and commitment to high personal standards form a role model for others.

Christie Wuerst
Communication Studies

Student Achievement Award: Presented by the faculty, recognizes an outstanding student project that is judged to have made a significant contribution to the student's area of academic interest.

Amy Sticka
Health Sciences

Outstanding Community Service Award: Presented by the faculty, recognizes outstanding contributions to OIT and/or the community. This is exemplified by high moral standards, a cooperative attitude with community leaders, and demonstrated service to others.

Allan Reeder
Biology

The Pride of OIT Award: Awarded upon recommendation of the Student Awards Commission to the student or students whose academic excellence, scholarship, service or other creative endeavors bring outstanding recognition and pride to OIT.

Hustlin' Owl Men's Basketball Team
Members: Mike Nieraeth, Jguwon Hogges, Ryan Fiegi, Joel Matchett, Nate Lewis, Trenton Newton-Jones, Ryan Beesley, Scott Snodgrass, Myles Daley, Brent Johnson, Joshua Wetzler, Christian Cavanaugh
Coaches: Danny Miles, Mike Pisan, Tim Bruner, and Aristide Agnimel