

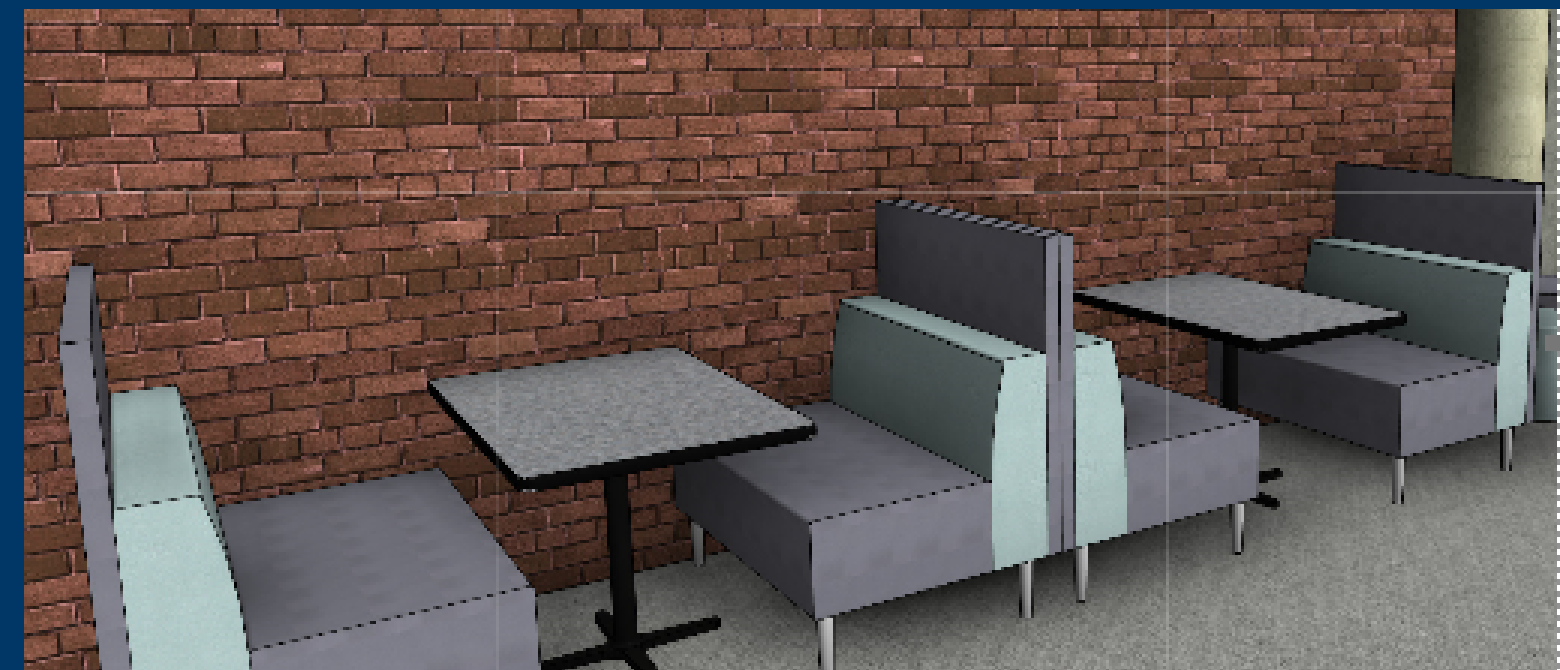
THE LIBRARY AND YOU

New Opportunities 2018-19

THE OREGON TECH LIBRARIES

KLAMATH FALLS CAMPUS LIBRARY

From the new Active Learning Lab in LRC 113 to the open spaces, flexible furniture, and whiteboards at the front of the library, we are creating spaces for students to collaborate.



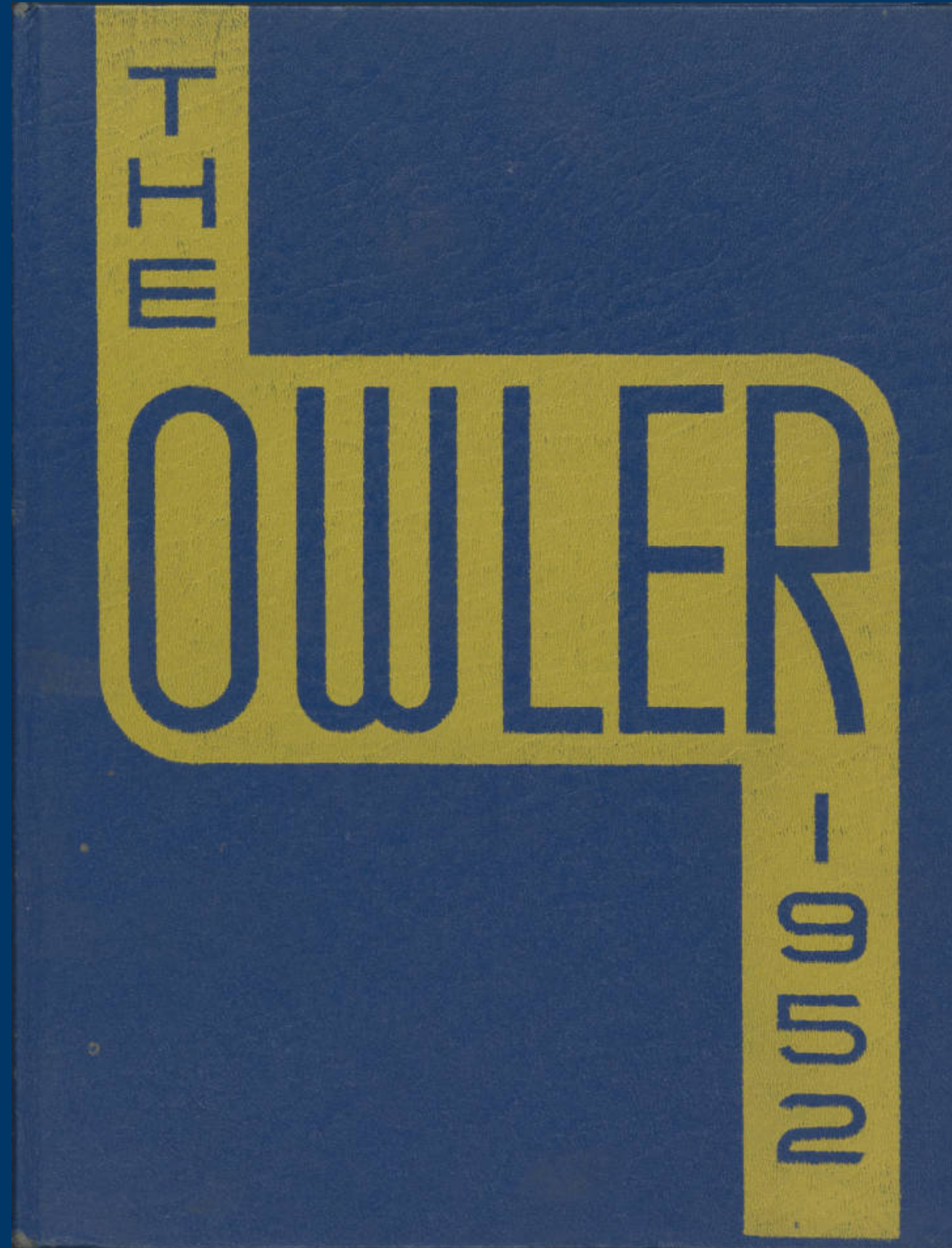
PORTLAND AND METRO LIBRARY SPACES

The Portland Metro campus library has created an open staff space to build a more welcoming and attentive service model.



UNIVERSITY ARCHIVES

Oregon Tech year books have been digitized and will be electronically available to everyone soon.



SHAW HISTORICAL LIBRARY

The Shaw Historical Library will reopen by Thanksgiving.



LAPTOP CHECKOUT



The Oregon Tech Libraries is now checking out laptops!

20 laptops are available for students on the Klamath Falls campus to check out for up to two hours

EQUIPMENT CHECKOUT

The Oregon Tech Libraries is now checking out lab equipment at Portland Metro!

Oscilloscopes, Multi meters, sensors, and more are available for 2 hour or longer check out.

COLLECTION DEVELOPMENT


This year the library is piloting targeted collection development funds to help new faculty ensure that their teaching and research needs are supported.

We will also have some funds available for other collection development, so contact your department's liaison librarian oit.edu/libraries/help/contact to suggest items for purchase


LIBRARY LIAISON FOCUSING

Single librarian contact by department


Liaison by Name




Aja BettencourtMcCarthy, Head of Public Services
📍 LRC 219-D
📞 [541.885.1767](tel:541.885.1767)
✉ [Send Email](#)
Business Management
Communication Studies
Mechanical & Manufacturing Engineering




Iris Godwin, Head of University Archives and Special Collections
📍 LRC214
📞 [541.885.1965](tel:541.885.1965)
✉ [Send Email](#)
Allied Health Sciences
Medical Imaging
Nursing
Respiratory Care and Polysomnography



Karen Kunz, Head of Systems and Technical Services
📍 LRC 210A
📞 [541.885.1769](tel:541.885.1769)
✉ [Send Email](#)
Civil Engineering
Computer Science Engineering
Geomatics
Math



Dawn LoweWincentzen, Head of Portland Metro Campus Library, Interim Director of Libraries
📍 Wilsonville
📞 [503.821.1258](tel:503.821.1258)
✉ [Send Email](#)
Dental Hygiene
Electrical/Renewable Energy Engineering
Medical Laboratory Science
Paramedic



Alla Powers, Special Collections Librarian
📍 LRC 212
📞 [541.885.1774](tel:541.885.1774)
✉ [Send Email](#)
Applied Psychology
Humanities & Social Sciences
Natural Sciences

Liaison Services

Instruction requests

Research Consultation

Collection Development

<https://www.oit.edu/libraries/help/contact/faculty-liaisons>

OPEN EDUCATIONAL RESOURCES

- *Continued support for creation and use of open educational resources.*
- *Hosting of created open educational resources*
- *Workshops and presentations from those who have already participated in this initiative*



LexisNexis®



HEINONLINE

Oregon Tech Libraries will be doing a trial of the Hein Online legal database as a potential replacement for Lexis Nexis. We look forward to working with faculty to test Hein Online to see whether the materials and functionality meet department and student needs.

Faculty Services

Special services for faculty include:

Instruction Sessions

[Request a Session](#)

- Information literacy sessions offered in collaboration with librarians
 - We work with the ACRL [Standards for Information literacy in higher education](#), and [the Information literacy framework](#)
- Subject-specific library research sessions offered in collaboration with librarians
- Copyright and plagiarism
- Attach a librarian to your online and hybrid classes Through the [instruction session request form](#).

[Off-campus access](#) to the library's databases with an Oregon Tech email account.

Course Reserves

[Search for Electronic and Print Reserves](#) in the online catalog: a list of the Oregon Tech course-related reserve materials available via the Internet.

To place items on reserve on the Klamath Falls campus should contact Circulation at 541-885-1778 or the [Access Services Manager](#).
To place items on reserve on the Portland Metro campus contact us at 503-821-1260 or via [email](#).

Other services include:

- [Copyright Resources](#)
- [Borrowing / Circulation Information](#)
- [Interlibrary Loan](#)
- [Purchase Request](#) - Email us your requests or contact a [Library Liaison](#)
- [Reference Services](#)
- Have a guide created for your class or subject by a [Library Liaison](#). [Subject pages](#)
- [Defining Plagiarism - Resources for Students](#)
- [Detecting Plagiarism](#) - Resources for Faculty
- [Open Educational Resources \(OER\)](#)
- [OER. Low cost/ No cost textbook grants 2018](#)
 - [Text creation](#)
 - [Text adapt or adopt](#)
- [Oregon Tech Library Publishing](#)
- [Capstone Project Digital collection](#) - Also see other [digital collections](#), and how the library can publish your students projects
- Use [Study spaces and LRC 113](#) for meetings and classes in Klamath Falls or other [study spaces in Wilsonville](#).

<https://www.oit.edu/libraries/about/services/faculty>

THANK YOU

We look forward to working with you this year!

PHONE

541-885-1767
503-821-1260

EMAIL

libtech@oit.edu

WEBSITE

www.oit.edu/library

