



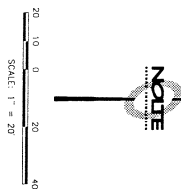
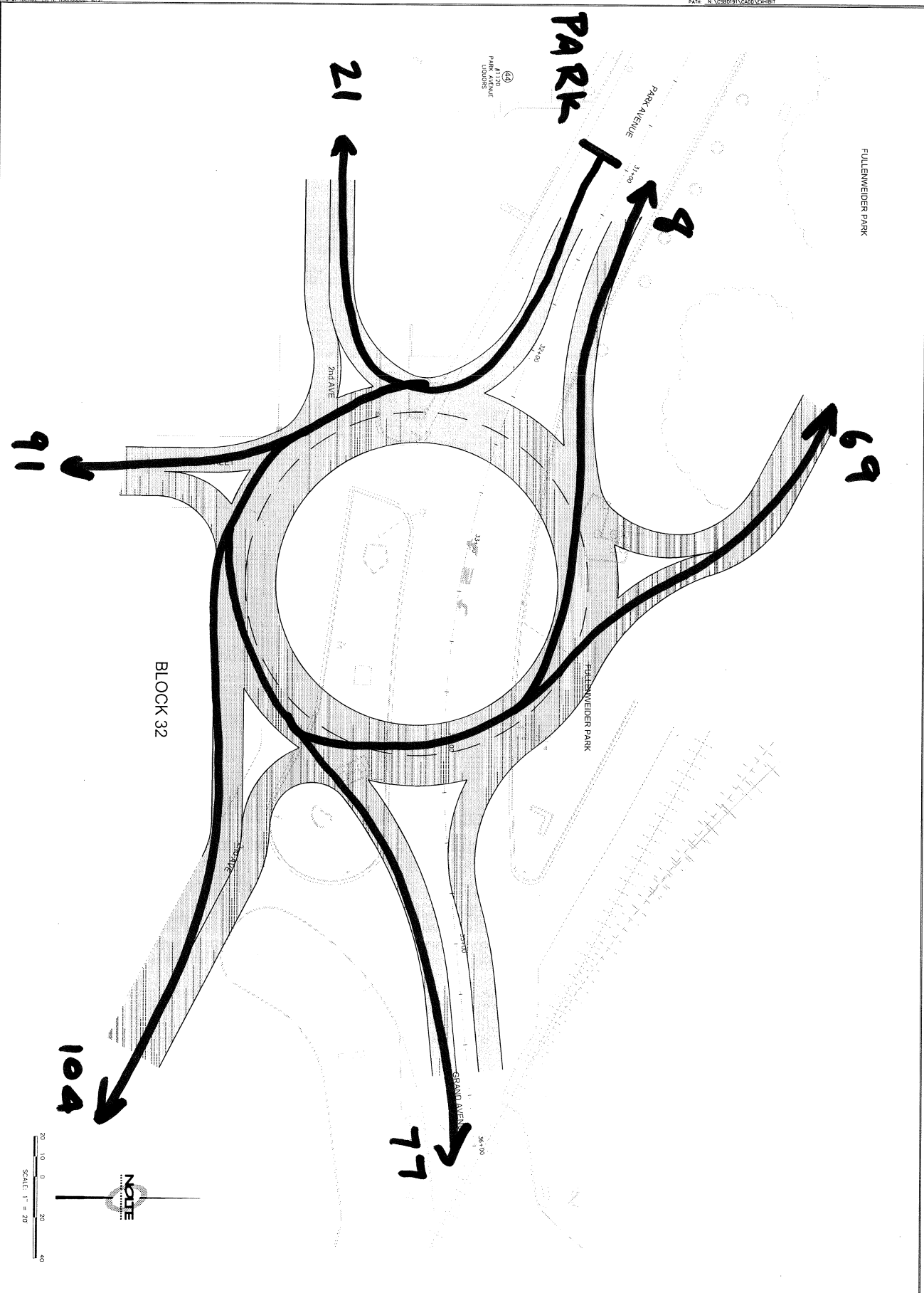
## Roundabout analysis using simulation

---

A roundabout design from the City of Monte Vista, California will be analyzed for level of service using a VISSIM simulation model. A file containing the basic geometric layout can be found at the course website – the attached sheets show design hour volumes for the intersection. Posted speeds on the approaches are 35mph except Fullenweider Park access road which is 20 mph.

1. Prepare a scaled VISSIM network using the monte.jpg file as the background. Prepare all necessary VISSIM coding (volumes, yields etc.)
2. Conduct a node analysis (10 run only) and determine the LoS of each movement and the entire intersection.
3. Prepare a simple (college assignment type) report consisting of the following:
  - A summary sheet with your name, name of intersection and a clear statement of results
  - Simulation detail - a printout of your results spreadsheet
  - Inp file – email me your inp file, name the file roundlastname.inp

*Due Monday, June 8*



SHEET NUMBER <b>RB01</b> TOTAL SHEETS 1 OF 1 SCALE: N/A APPROVAL: [Signature] DATE: 1/17/07 SHEET NUMBER CS8019100
--

**NOLTE**  
 BEYOND ENGINEERING  
 2225 N. ACADEMY BLVD., SUITE 304 COLORADO SPRINGS, CO 80914  
 719.268.8000 TEL. 719.268.3559 FAX  
 WWW.NOLTE.COM

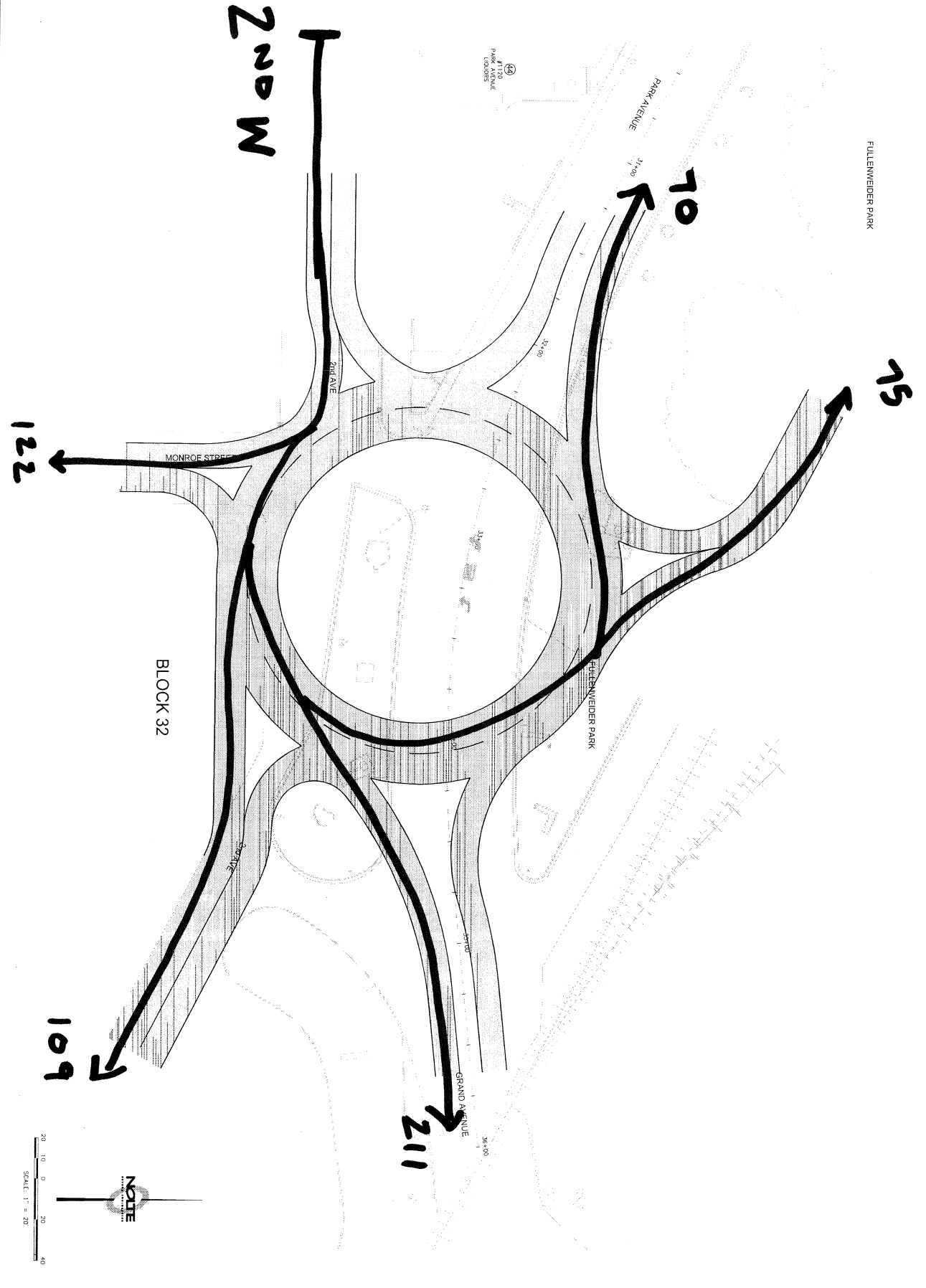
**MONTE VISTA**  
 OPTIONAL ROUNDABOUT

PREPARED FOR: CITY OF MONTE VISTA  
 DATE SUBMITTED: DEC. 2006

NO.	BY	DATE	REVISION

CAUTION: The engineer preparing these plans will not be responsible for, or liable for, unauthorised changes to or use of these plans. All changes to the plans must be in writing and must be approved by the engineer of these plans.

REFS: BK702 (Rev. Roundabout.dwg)



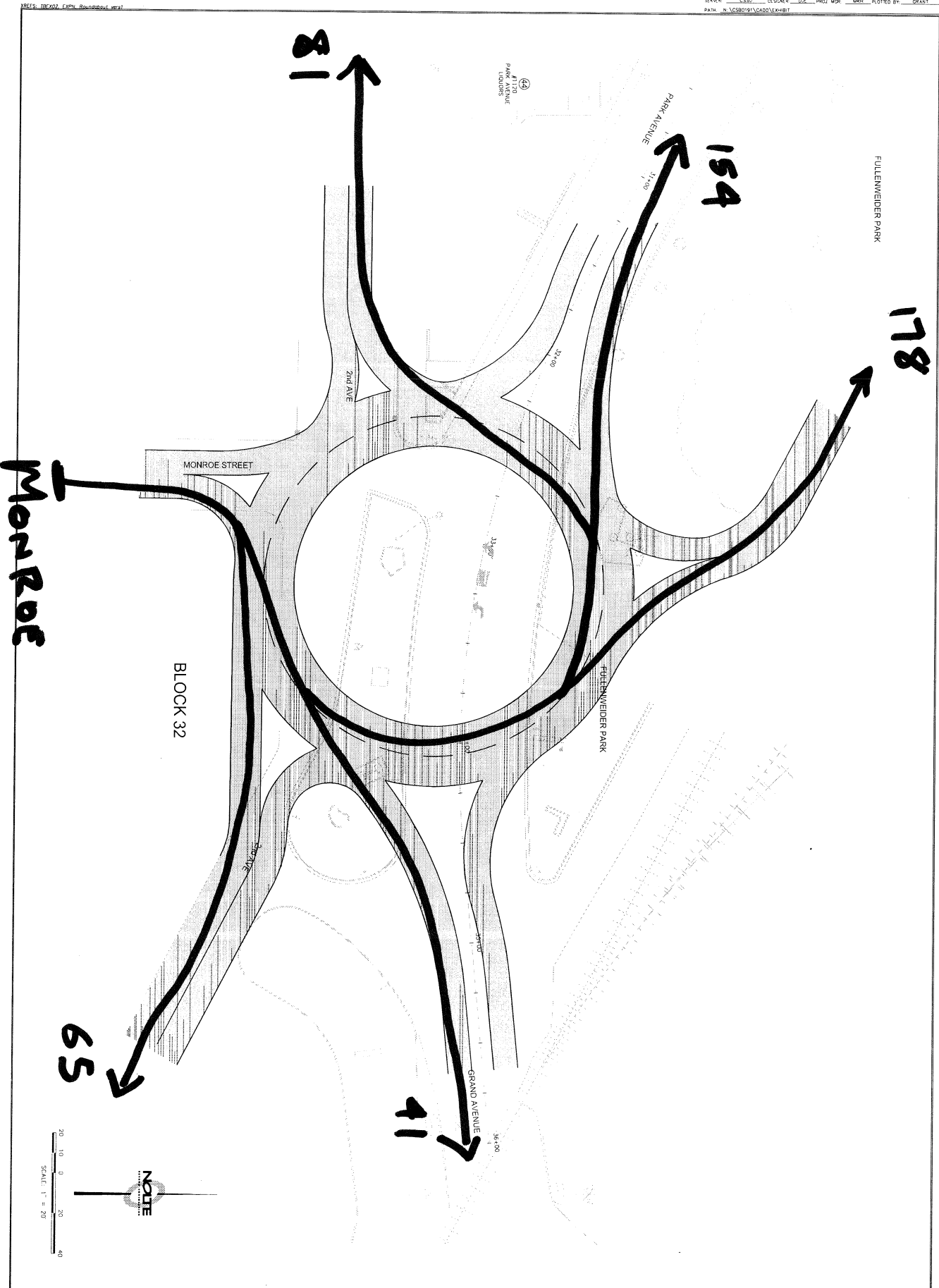
**NOLTE**  
 BEYOND ENGINEERING  
 3225 N. ACADEMY BLVD., SUITE 304 COLORADO SPRINGS, CO 80918  
 719.268.8500 TEL 719.268.9200 FAX WWW.NOLTE.COM

**MONTE VISTA**  
 OPTIONAL ROUNDABOUT  
 PREPARED FOR: CITY OF MONTE VISTA  
 DATE SUBMITTED: DEC, 2006

NO.	BY	DATE	REVISIONS

CAUTION: The engineer preparing these plans will not be responsible for or liable for, unanticipated changes to or areas of these plans. All changes to the plans must be in writing and must be approved by the engineer of these plans.

SCALE: 1" = 20'  
 SHEET NUMBER: RB01  
 OF 1 SHEETS  
 REVISION: N/A  
 DRAWING NO: CS8019100



SHEET NUMBER: RB01  
 SCALE: 1" = 20'  
 DATE: 12/17/07  
 DRAWN BY: MKH  
 CHECKED BY: D.J.E.  
 C58019100

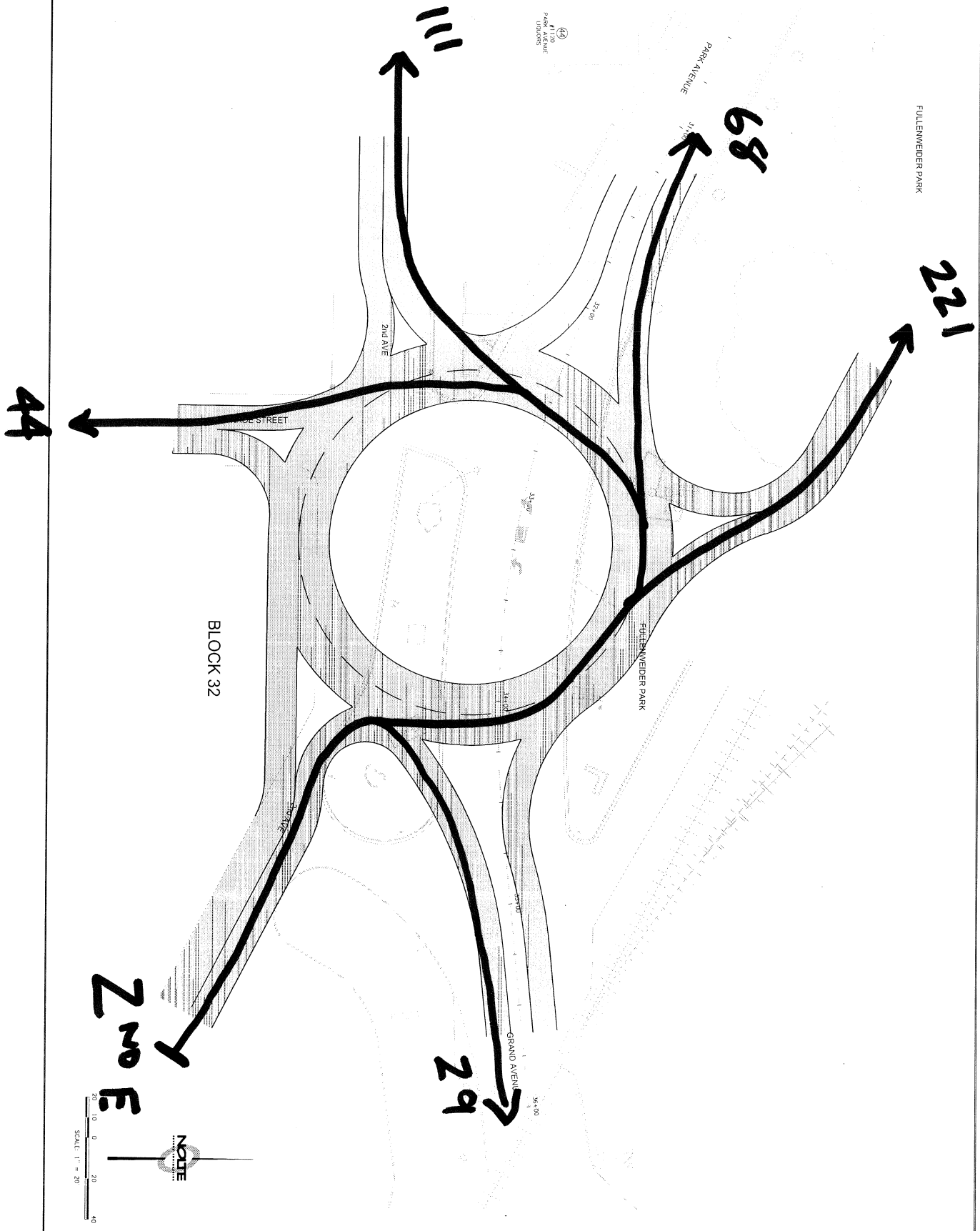
**NOLTE**  
 BEYOND ENGINEERING  
 3225 N. ACADEMY BLVD., SUITE 304 COLORADO SPRINGS, CO 80918  
 719.268.8500 TEL 719.268.9200 FAX WWW.NOLTE.COM

PREPARED FOR: CITY OF MONTE VISTA  
 DATE SUBMITTED: DEC. 2006

NO.	BY	DATE	REVISIONS

The engineer preparing these plans will not be responsible for or liable for unapproved changes to or uses of these plans. All changes to the plans must be in writing and must be approved by the preparer of these plans.

REFS: 15R012 EXH. Roundabout.dwg



DATE: 1/17/07  
 TIME: 1:00:35 PM  
 DRAWING NAME: EX02B01.DWG  
 SERVER: CS02  
 DESIGNED: J.E.  
 PROJ. MGR: MMH  
 PLOTTED BY: GRANT  
 PATH: N:\CS02\15\ACADEMY\H01

**NOLTE**  
 BEYOND ENGINEERING  
 4225 N. ACADEMY BLVD., SUITE 304 COLORADO SPRINGS, CO 80918  
 719.268.8500 TEL 719.268.3290 FAX 719.268.3290  
 WWW.NOLTE.COM

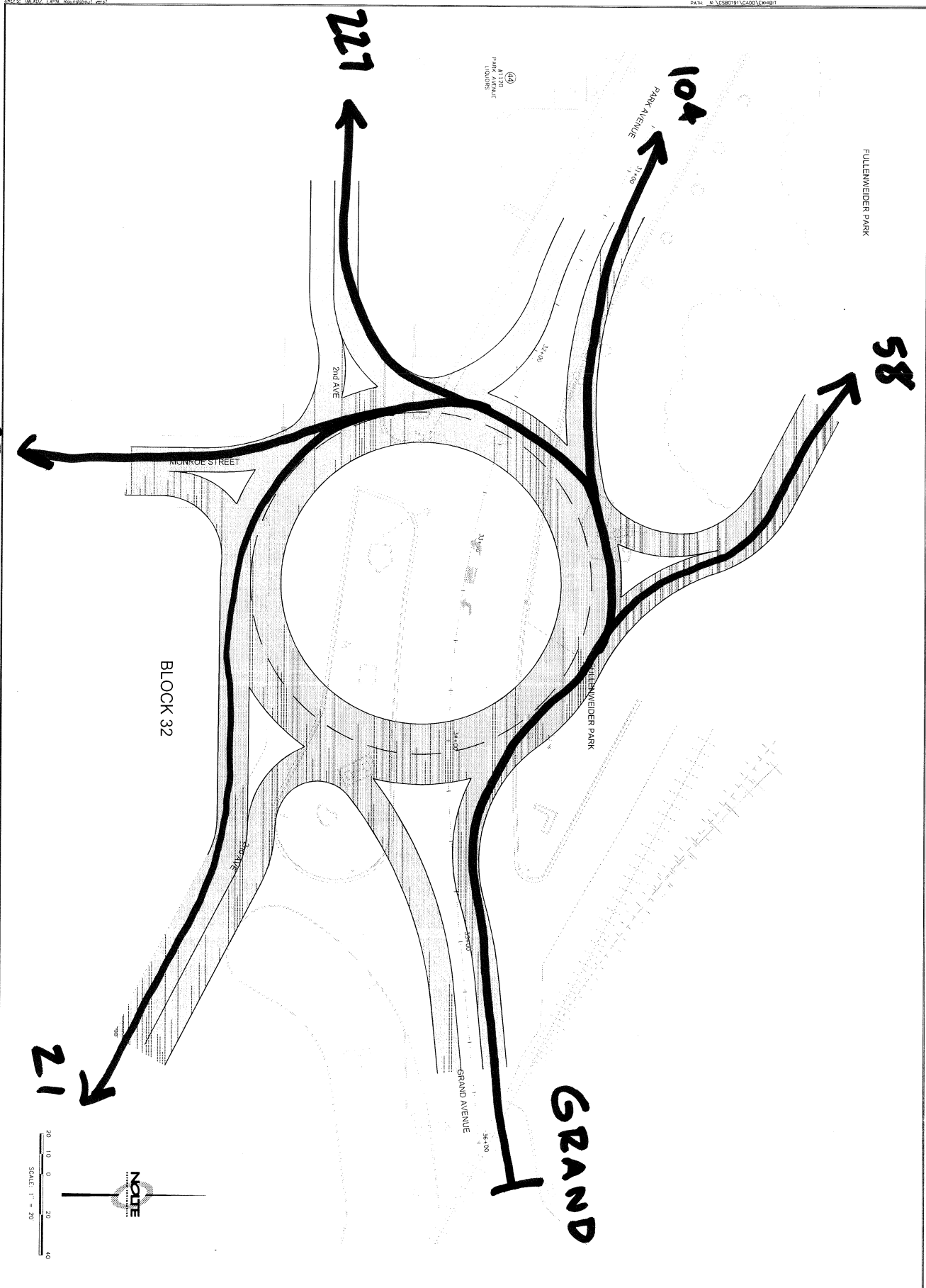
**MONTE VISTA**  
 OPTIONAL ROUNDABOUT  
 PREPARED FOR: CITY OF MONTE VISTA  
 DATE SUBMITTED: DEC. 2006

NO.	BY	DATE	REVISIONS

CAUTION: The engineer preparing these plans will not be responsible for or liable for unanticipated changes to or use of these plans. All changes to the plans must be in writing and must be approved by the engineer of these plans.

DR. ROBERT CSB019100

PROJECT NUMBER: RB01  
 SCALE: 1" = 20'  
 SHEETS: 1 OF 1



**NOLTE**  
 BEYOND ENGINEERING

3225 N. ACADEMY BLVD., SUITE 304 COLORADO SPRINGS, CO 80918  
 719.268.8500 TEL 719.268.9269 FAX  
 WWW.NOLTE.COM

MONTE VISTA  
 OPTIONAL ROUNDABOUT

PREPARED FOR: CITY OF MONTE VISTA

DATE SUBMITTED: DEC. 2006

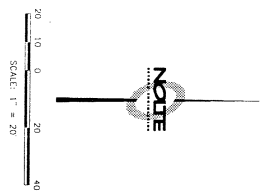
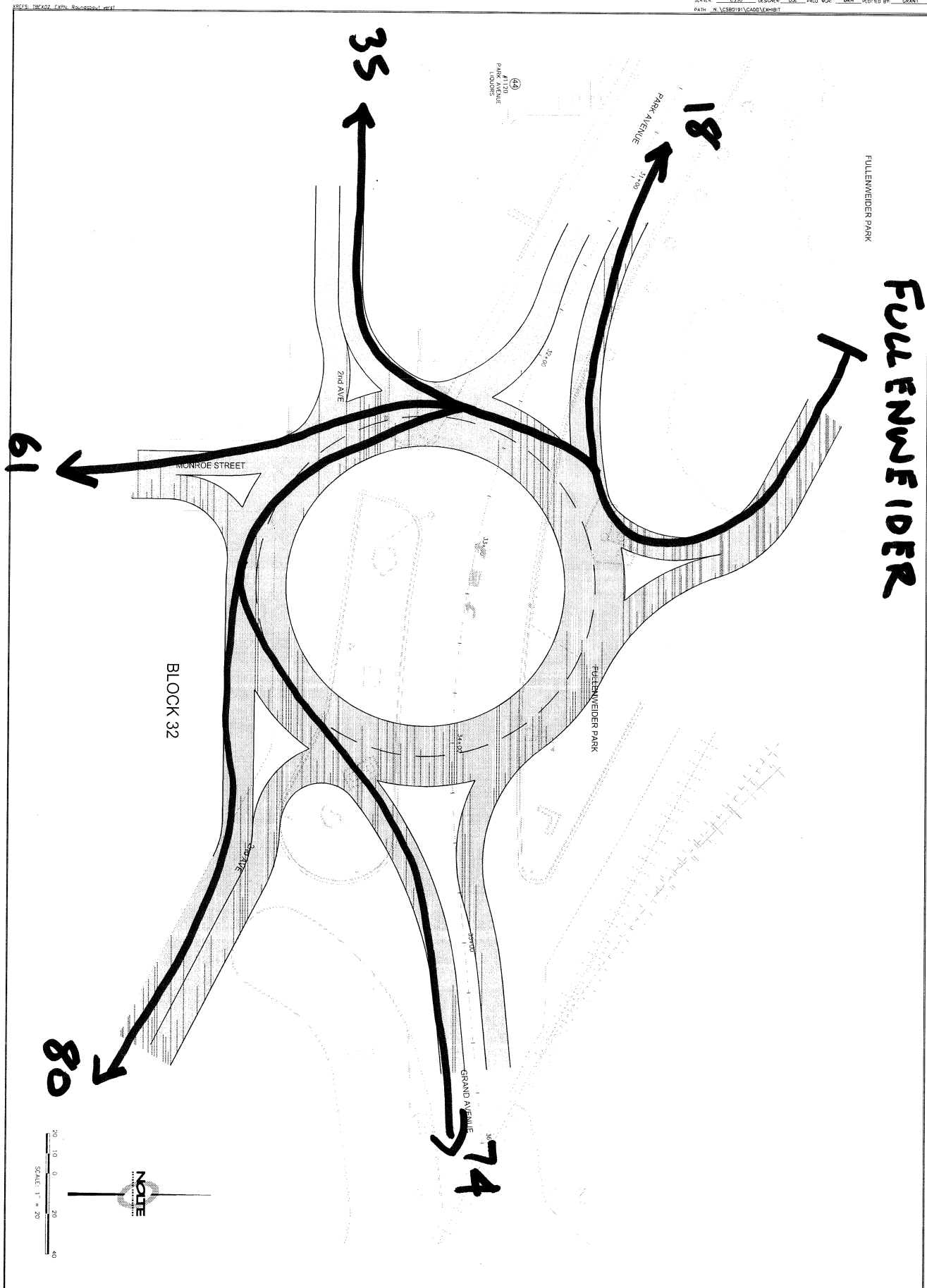
NO.	BY	DATE	REVISIONS

CAUTION: The engineer preparing these plans will not be responsible for, or liable for, unanticipated changes to or uses of these plans. All changes to the plans must be in writing and must be approved by the preparer of these plans.

SHEET NUMBER: RB01  
 SCALE: N/A  
 APPROVAL: N/A  
 REVISION: 00  
 JOB NUMBER: CSB019100

FULLENWEIDER PARK

# FULLENWEIDER



200 NUMBER  
 CS071300

SCALE  
 1" = 20'  
 1 OF 1 SHEETS  
 RB01  
 AMICAL, N/A  
 MONROE, CO

**NOLTE**  
 BEYOND ENGINEERING

2225 N. ACADEMY BLVD., SUITE 104 COLORADO SPRINGS, CO 80912  
 719.268.8500 TEL 719.268.3559 FAX X:WWW.NOLTE.CO

MONTE VISTA  
 OPTIONAL ROUNDABOUT

PREPARED FOR: CITY OF MONTE VISTA DATE SUBMITTED: DEC. 2006

NO.	BY	DATE	REVISIONS

CAUTION: The engineer preparing these plans will not be responsible for, or liable for, unanticipated changes to or use of these plans. All changes to the plans must be in writing and must be approved by the engineer of these plans.